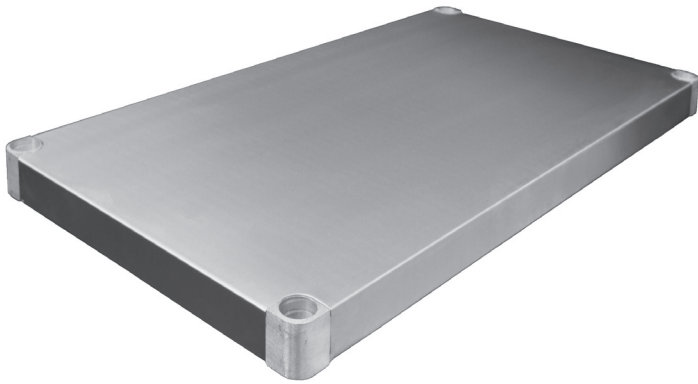


## GALVANIZED

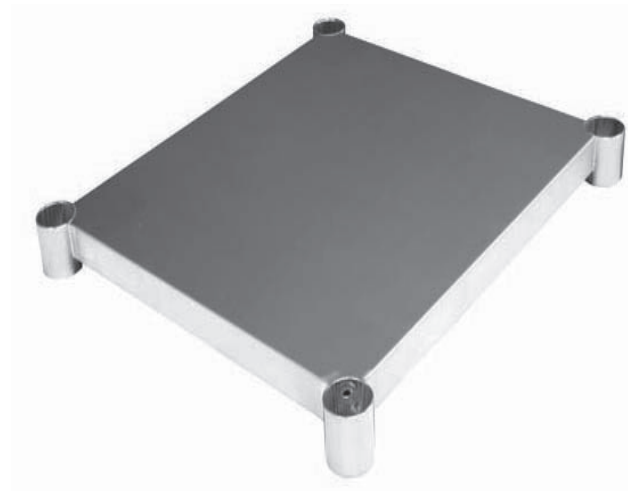


- Galvanized Undershelf
- Non-welded corners
- Various sizes to fit your needs

Model	Width*	Length*
DUS-2424-GS	24"	24"
DUS-2430-GS	24"	30"
DUS-2436-GS	24"	36"
DUS-2448-GS	24"	48"
DUS-2460-GS	24"	60"
DUS-2472-GS	24"	72"
DUS-2484-GS	24"	84"
DUS-2496-GS	24"	96"
DUS-3030-GS	30"	30"
DUS-3036-GS	30"	36"
DUS-3048-GS	30"	48"
DUS-3060-GS	30"	60"
DUS-3072-GS	30"	72"
DUS-3084-GS	30"	84"
DUS-3096-GS	30"	96"

\* SIZE OF TABLE

## STAINLESS STEEL



- Stainless Steel Undershelf
- Various sizes to fit your needs
- 18 gauge

Model	Width*	Length*
DUS-2424-SS	24"	24"
DUS-2430-SS	24"	30"
DUS-2436-SS	24"	36"
DUS-2448-SS	24"	48"
DUS-2460-SS	24"	60"
DUS-2472-SS	24"	72"
DUS-2484-SS	24"	84"
DUS-2496-SS	24"	96"
DUS-3030-SS	30"	30"
DUS-3036-SS	30"	36"
DUS-3048-SS	30"	48"
DUS-3060-SS	30"	60"
DUS-3072-SS	30"	72"
DUS-3084-SS	30"	84"
DUS-3096-SS	30"	96"

\* SIZE OF TABLE