



Item No. \_\_\_\_\_

# 794 Soft Serve Freezer

Twin Twist

## Features

Offer all the popular soft serve variations from low or non-fat ice creams to custards, yogurt and sorbet. Serve two separate soft serve flavors, or an equal combination of both in a twist.

### Freezing Cylinder

Two, 3.4 quart (3.2 liter).

### Mix Hopper

Two, 14 quart (13.2 liter). Separate hopper refrigeration (SHR) maintains mix below 41°F (5°C) during Auto and Standby modes.

### Indicator Lights

Mix Low light alerts operator to add mix. Audible alarm may be enabled to sound when mix is low.

### Electronic Controls

Softech™ is our exclusive microprocessor based master control that regulates refrigeration by measuring product viscosity to maintain consistent quality.

### Standby

During long no-use periods, the standby feature maintains safe product temperatures in the mix hopper and freezing cylinder.

### Optional Drain Assembly

An optional factory installed drain assembly, with funnel, is available to simplify the cleaning process. A drain line, connected under the drip tray connects to a 1" FPT coupling in the base pan to drain rinse water to a floor drain.

### Two Locking Casters

Front casters have a locking feature for operators to lock to maintain equipment in place. The locking casters can be released to move the equipment for cleaning.

### Freezer Door

A specially designed thermo-plastic door allows quick ejection of product. Push forward on the ergonomic draw handle to dispense. Self-closing draw handles are standard.

### Door Interlock System

Protects the operator from injury as the beater will not operate without the dispensing door in place.

#### Approval Mark Note:

The Approval marks shown below may not apply to every model configuration. Approvals may vary based on Voltage, Model Option and Accessory selection, please contact your local distributor for more information.

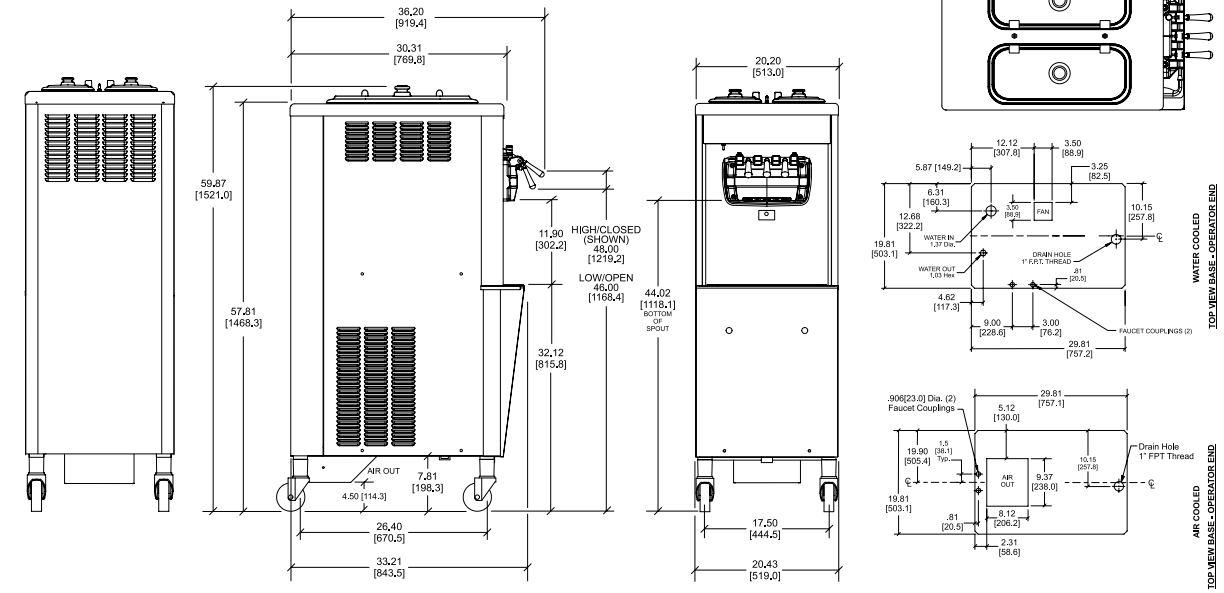
750 N. Blackhawk Blvd. Rockton, Illinois 61072  
**800-255-0626**  
 Phone 815-624-8333 Fax 815-624-8000  
**www.taylor-company.com**  
 info@taylor-company.com

ISO 9001:2015  
 Registered Firm



794

794



FIGURES IN BRACKETS INDICATE MILLIMETERS EQUIVALENT TO DECIMAL DIMENSIONS ( PLUS OR MINUS 1/16 INCH [1.5mm] ).

Weights	lbs.	kgs.
Net	640	290.3
Crated	699	317.1
Volume	cu. ft.	cu. m.
	48.9	1.38
Dimensions	in.	mm.
Width	20-7/16	519
Depth	33-3/16	844
Height	59-7/8	1521
Floor Clearance	4-1/2	114

\*Mounted on standard casters

Electrical	Maximum Fuse Size		Minimum Circuit Ampacity		Poles (P) Wires (W)
	Left	Right	Left	Right	
220-240/50/1 Air	25	20	19	17	2P 3W

## Specifications

### Electrical

Two dedicated electrical connections are required. See the Electrical chart for the proper electrical requirements. Manufactured to be permanently connected. Consult your local Taylor distributor for cord & receptacle specifications as local codes allow.

### Beater Motor

Two, 1.5 HP.

### Refrigeration System

Two, 9,500 BTU/hr. R404A.  
 Separate Hopper Refrigeration (SHR), One, 400 BTU/hr. R134a.  
 (BTUs may vary depending on compressor used.)

### Air Cooled

Minimum 3" (76 mm) around all sides. Install the deflector provided to prevent recirculation of warm air. Minimum air clearances must be met to assure adequate air flow for optimum performance.

## Options

- Cone Dispenser
- Drain with Funnel
- Draw handles to meet Americans with Disabilities Act requirements
- Draw Valve Lock Kit
- Faucet
- Sneeze Guard
- Syrup Rail Kit (side mount)

This unit may be manufactured in other electrical characteristics and may have additional regulatory agency approvals. Consult the local Taylor Distributor for other electrical characteristics and agency approvals based on specific electrical and country requirements.  
 (For exact electrical information and approval marks, always refer to the data label of the unit.)

**Continuing research results in steady improvements; therefore, these specifications are subject to change without notice.**

### Bidding Specs

Electrical: Volt \_\_\_\_\_ Hz \_\_\_\_\_ ph \_\_\_\_\_  
 Neutral: Yes No Cooling: Air Water NA

Options: \_\_\_\_\_

### Authorized Taylor Distributor



750 N. Blackhawk Blvd.  
 Rockton, Illinois 61072  
**www.taylor-company.com**