



Item No. \_\_\_\_\_

# C791

## Soft Serve Freezer

C791

Twin Twist

### Features

Offers all the popular soft serve variations, from low or non-fat ice creams to custards, yogurt, and sorbet. Serve two separate soft serve flavors or an equal combination of both in a twist.

### Freezing Cylinder

Two, 3.4 quart (3.2 liter).

### Mix Hopper

Two, 14 quart (13.2 liter). Separate hopper refrigeration (SHR) maintains mix below 41°F (5°C) during Auto and Standby modes.

### Indicator Lights

Mix Low and Mix Out light alerts operator to add mix. Audible alarm may be enabled to sound when mix is low.

### Electronic Controls

Softech™ is our exclusive microprocessor-based master control that regulates refrigeration by measuring product viscosity to maintain consistent quality.

### Standby

During long no-use periods, the Standby feature maintains safe product temperatures in the mix hopper and freezing cylinder.

### Freezer Door

A specially designed thermoplastic door allows quick ejection of product. Push forward on the ergonomic draw handle to dispense. Self-closing draw handles are standard.

### Door Interlock System

Protects the operator from injury as the beater will not operate without the dispensing door in place.

### Pull Handles

Convenient recessed pull handles for ease in moving the equipment for cleaning.

### Two Locking Casters

Front casters have a locking feature for operators to keep equipment in place. The lock can be released to move the equipment for cleaning.



#### Approval Mark Note:

The Approval marks shown below may not apply to every model configuration. Approvals may vary based on Voltage, Model Option and Accessory selection, please contact your local distributor for more information.

750 N. Blackhawk Blvd. Rockton, Illinois 61072  
**800-255-0626**  
Phone 815-624-8333 Fax 815-624-8000  
**www.taylor-company.com**  
info@taylor-company.com

ISO 9001:2015  
Registered Firm



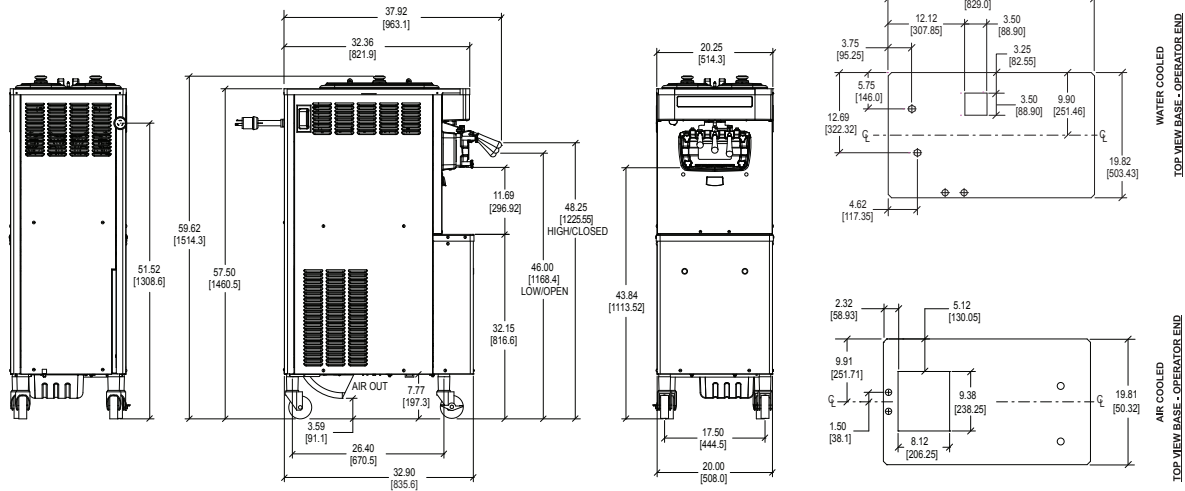
Standard 6



**LISTED**  
SA2650



Selected 50/60  
Hz. Models



FIGURES IN BRACKETS INDICATE MILLIMETERS / DECIMAL AND FRACTIONAL DIMENSIONS EQUAL TO ( PLUS OR MINUS 1/16 INCH [1.5mm]).

Weights	lbs.	kgs.
Net	527	239.0
Crated	586	265.8

**\*For reference only**

	cu. ft.	cu. m.
Volume	47.3	1.34

Dimensions	in.	mm.
Width	20-1/4	514
Depth	32-5/16	836
Height	59-5/8	1514
Floor Clearance	4-1/2	114

**\*Mounted on standard casters**

Electrical	Total Amps	Supplied with NEMA Cord
208-230/60/1 Air	19.0	L6-30P
208-230/60/1 Water	19.0	L6-30P
208-230/60/3 Air	12.0	L15-20P
380-415/50/3N~ Air	7.5	---

This unit may be manufactured with other electrical characteristics and may have additional regulatory agency approvals. Consult the local Taylor distributor for other electrical characteristics and agency approvals based on specific electrical and country requirements. (For exact electrical information, approval marks, and refrigerant, always refer to the data label of the unit.)

**Continuing research results in steady improvements; therefore, these specifications are subject to change without notice.**

**Bidding Specs**

Electrical: Volt \_\_\_\_\_ Hz \_\_\_\_\_ ph \_\_\_\_\_  
 Neutral: Yes No      Cooling: Air Water NA

**Options:** \_\_\_\_\_

All options may not be available in combination with others or with all electrical or cooling configurations. Please consult your local Taylor distributor.

**Authorized Taylor Distributor**

**Specifications**

**Electrical**

One dedicated electrical connection is required. See the electrical chart for the proper electrical requirements. Unit supplied with cord and plug. Consult the international Taylor distributor for cord and receptacle specifications for 50 Hz equipment.

**Beater Motor**

Two, 1.5 hp.

**Refrigeration System**

One, 10,100 BTU/hr. R449A.  
 Separate Hopper Refrigeration (SHR), one, 400 BTU/hr. R134a. (BTUs may vary depending on compressor used.)

**Air-Cooled**

Minimum clearance of 3" (76 mm) around all sides. Install the deflector provided to prevent recirculation of warm air. Minimum air clearances must be met to ensure adequate airflow for optimum performance.

**Water-Cooled**

Water inlet underside of base 1/2" FPT.

**Accessories**

- Cone Dispenser
- Draw Valve Lock Kit
- Syrup Rail Kit (side mount)

**Options**

- Hopper Agitators
- Rear Mix Lights



750 N. Blackhawk Blvd.  
 Rockton, Illinois 61072  
[www.taylor-company.com](http://www.taylor-company.com)