



Item No. _____

632 Combination Freezer

Single Shake, Single Soft Serve

Features

Offers all the popular shake and soft serve variations, from low fat shakes and smoothies, low or non-fat ice creams, to custards, yogurt, and sorbet.

Freezing Cylinder

Shake side, 7 quart (6.6 liter).
Soft Serve side, 3.4 quart (3.2 liter).

Refrigerated Mix Hoppers

Two, 20 quart (18.9 liter). Separate hopper refrigeration (SHR) maintains mix below 41°F (5°C) during Auto and Standby modes.

Indicator Lights

Mix Low light reminds operator to add mix. Audible alarm may be enabled to sound when mix is low.

Electronic Controls

Finished product quality is monitored by Softech™ controls that measure viscosity.

Standby

During long no-use periods, the Standby feature maintains safe product temperatures in the mix hopper and freezing cylinder.

Two Locking Casters

Front casters have a locking feature for operators to lock to maintain equipment in place. The locking casters can be released to move equipment for cleaning.



Optional syrup rail and panel spinner

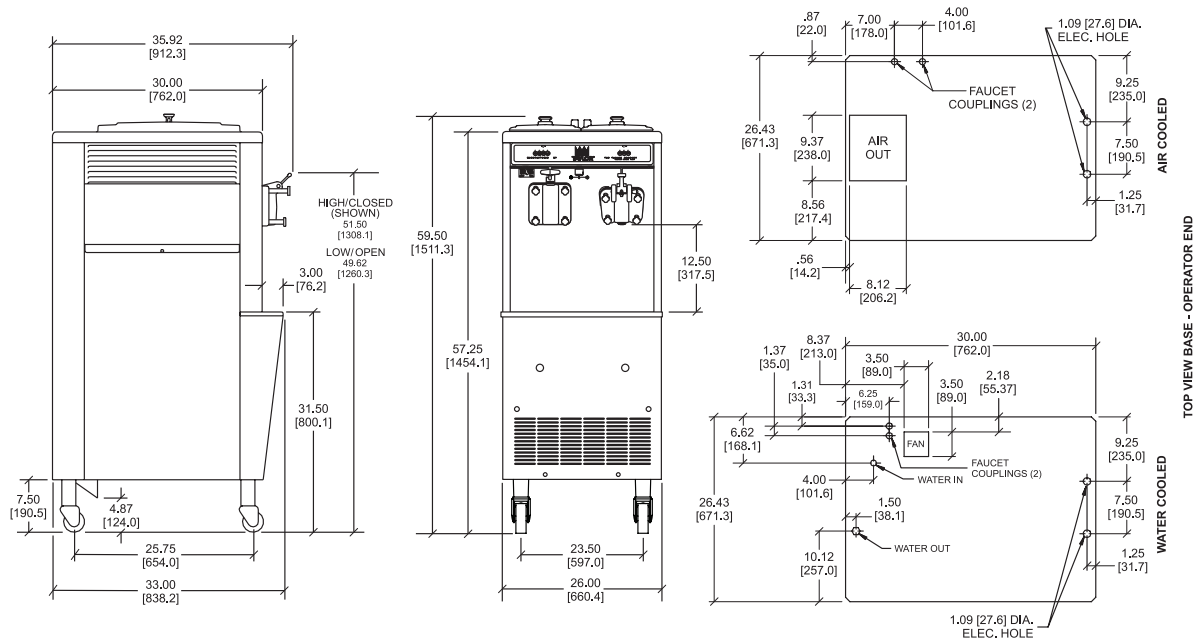
Approval Mark Note:

The Approval marks shown below may not apply to every model configuration. Approvals may vary based on Voltage, Model Option and Accessory selection, please contact your local distributor for more information.

750 N. Blackhawk Blvd. Rockton, Illinois 61072
800-255-0626
Phone 815-624-8333 Fax 815-624-8000
www.taylor-company.com
info@taylor-company.com

ISO 9001:2015
Registered Firm





FIGURES IN BRACKETS INDICATE MILLIMETERS / DECIMAL DIMENSIONS EQUAL TO (PLUS OR MINUS 1/16 INCH [1.5mm])

Weights	lbs.	kgs.
Net	675	306.2
Crated	699	317.0

***For reference only**

	cu. ft.	cu. m.
Volume	47.4	1.33

Dimensions	in.	mm.
Width	26	661
Depth	33	839
Height	59-1/2	1512
Floor Clearance	7-1/2	191

***Mounted on standard casters**

Electrical	Maximum Fuse Size		Minimum Circuit Ampacity		Poles (P) Wires (W)
	Left	Right	Left	Right	
208-230/60/1 Air	30	25	21	18	2P 3W
208-230/60/1 Water	30	25	20	18	2P 3W
208-230/60/3 Air	15	20	13	14	3P 4W
208-230/60/3 Water	15	20	12	14	3P 4W
220-240/50/1 Air	25	20	19	16	2P 3W
380-415/50/3N~ Air	9	8	8	7	4P 5W

This unit may be manufactured with other electrical characteristics and may have additional regulatory agency approvals. Consult the local Taylor distributor for other electrical characteristics and agency approvals based on specific electrical and country requirements. (For exact electrical information, approval marks, and refrigerant, always refer to the data label of the unit.)

Continuing research results in steady improvements; therefore, these specifications are subject to change without notice.

Bidding Specs

Electrical: Volt _____ Hz _____ ph _____
 Neutral: Yes No Cooling: Air Water NA

Options: _____

All options may not be available in combination with others or with all electrical or cooling configurations. Please consult your local Taylor distributor.

Authorized Taylor Distributor

Specifications

Electrical

Two dedicated electrical connections are required. See the electrical chart for the proper electrical requirements. Manufactured to be permanently connected. Consult your local Taylor distributor for cord, and receptacle specifications as local codes allow.

Beater Motor

Shake, 1.0 hp.; Soft Serve, 1.5 hp.

Refrigeration System

Shake, 11,600 BTU/hr.; Soft Serve, 10,100 BTU/hr. R449A. Separate Hopper Refrigeration (SHR), one, 400 BTU/hr. R134a. (BTUs may vary depending on compressor used.)

Air-Cooled

Minimum 3" (76 mm) around all sides. Install the deflector provided to prevent recirculation of warm air. Minimum air clearances must be met to ensure adequate airflow for optimum performance.

Water-Cooled

Water inlet and drain connections underside of base 1/2" FPT.

Accessories

- Cone Dispenser
- Faucet
- Side Mount Syrup Rail, 2 compartment

Options

- Refrigerated Syrup Rail, 3 compartment
- Panel Spinner



750 N. Blackhawk Blvd.
 Rockton, Illinois 61072
www.taylor-company.com