

HD22 and HD30 Service Parts

This is the list of service parts and wiring diagrams for all versions of these two hotel dispensers.

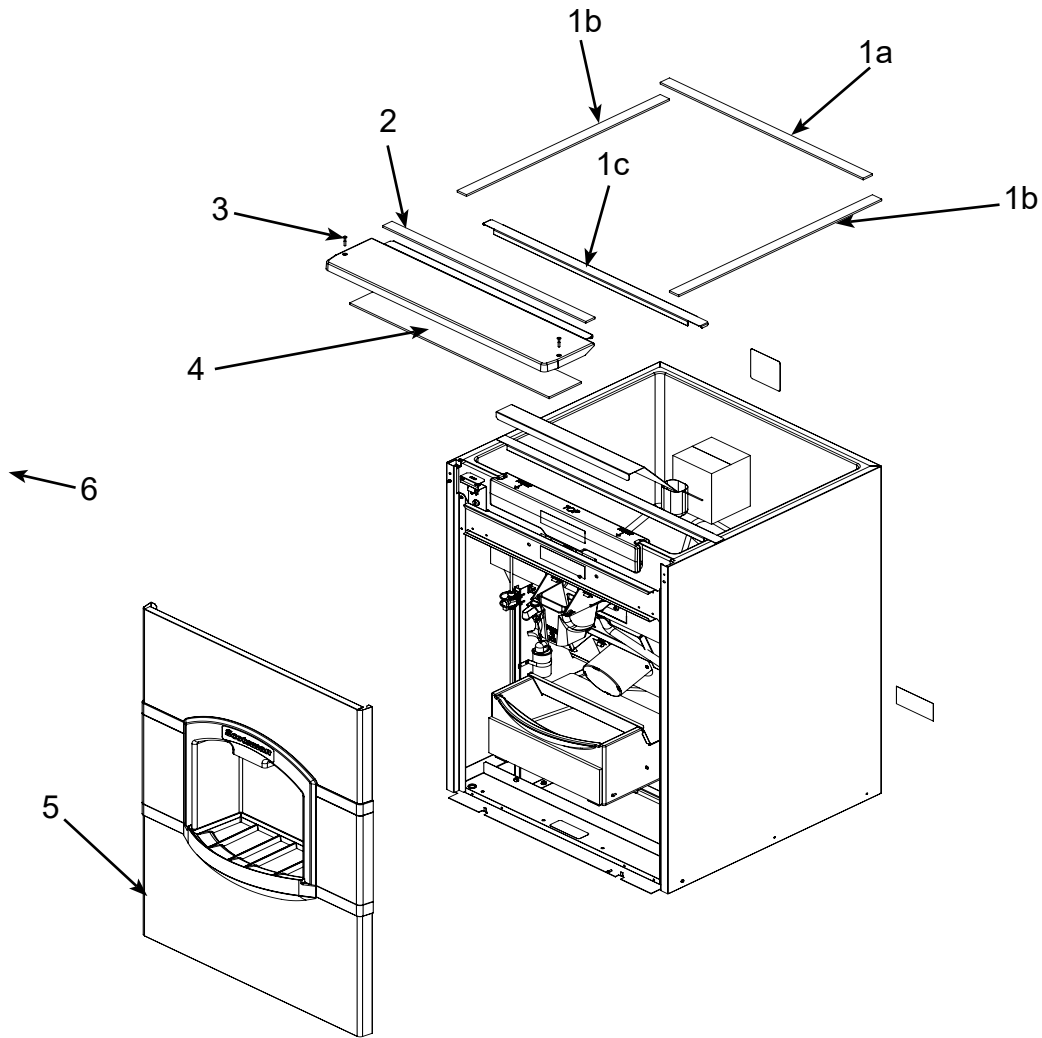
Pay close attention to the voltage and/or cycles to be sure of ordering the correct part.

Contents

Front and Top Panels	2
HD30B & HD22B Front Panel	3
HD30N and HD30W Front Panel & Related Parts	4
Side, Back and Interior Panels	5
Dispensing Components	6
Ice Chute Mechanism.....	7
Ice Catch Pan.....	8
Control Box.....	9
Wiring Diagram, 115 volt, 60 Hz Basic and Water Station.....	10
Schematic Diagram, Basic and Water Station Models	11
Wiring Diagram, 230 volt, 50 Hz Basic.....	12
Wiring Diagram for Coin Mechanism Model.....	13
Schematic Diagram for Coin Mechanism Model	14

HD22 and HD30 Service Parts

Front and Top Panels



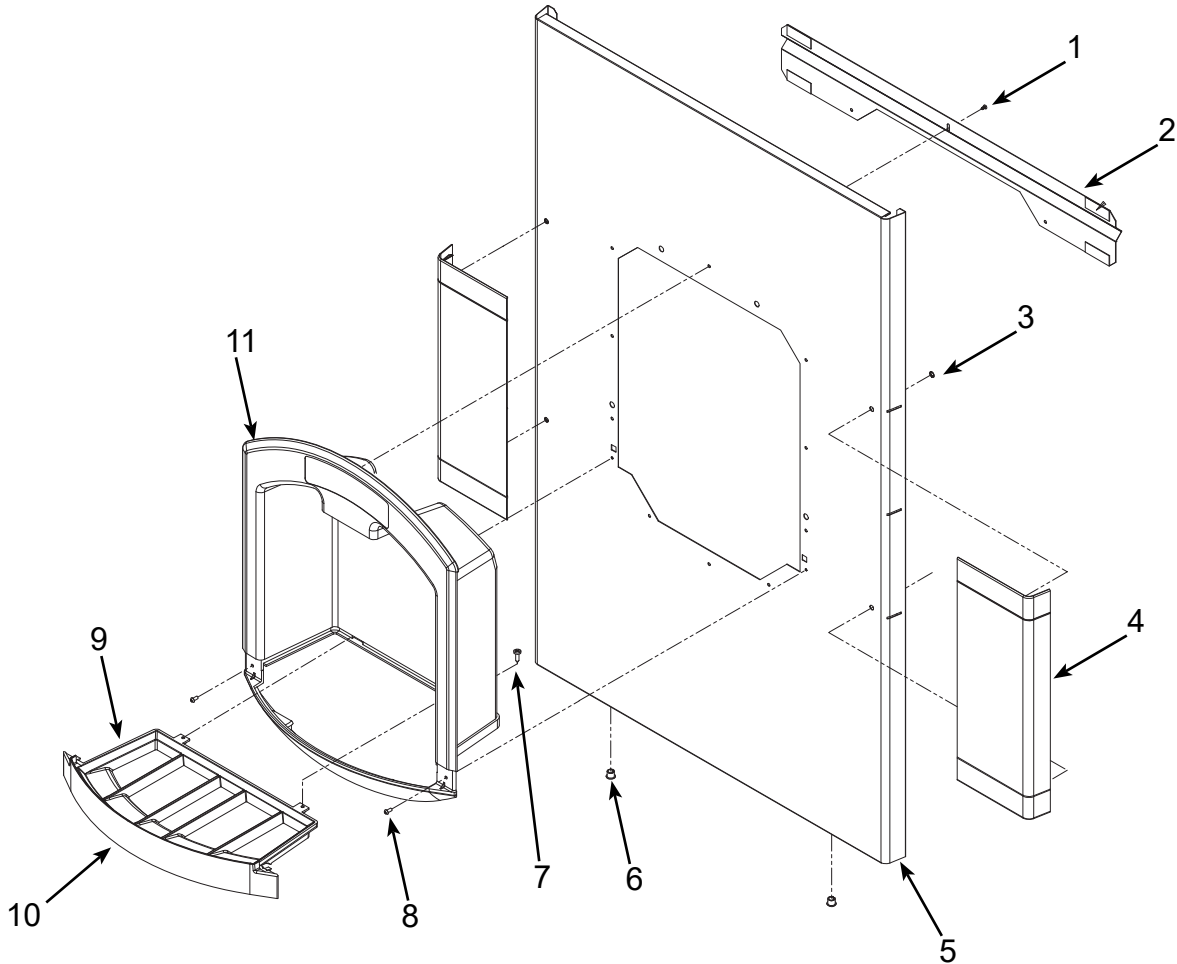
Item Number	Part Number	Description
1.	19-0503-04	Gasket tape, order by ft.
1a		Use 27.5" for HD30, 19.5" for HD22
1b		Use 27.88"
1c		Use 27.25" for HD30, 19.25" for HD22
2.	02-3997-31	HD30 top panel
	02-3997-33	HD22 top panel
3.	03-1735-03	Top panel screw
4.	02-3998-01	HD30 panel insulation
	02-3998-02	HD22 panel insulation
5.	A38318-021	HD30B/W front panel with side flanges
	A38319-021	HD22B/W front panel with side flanges

Item Number	Part Number	Description
6a	A39516-001	HD30 Support brace, use began June 2008, fits slots in top of side panels, slots also added at that time. Kit to add to prior models: A39517-021.
6b	A39517-022	HD22 support brace kit

Note: Item 5 does not include sink / drip tray components. See next page for accurate illustration.

HD22 and HD30 Service Parts

HD30B & HD22B Front Panel



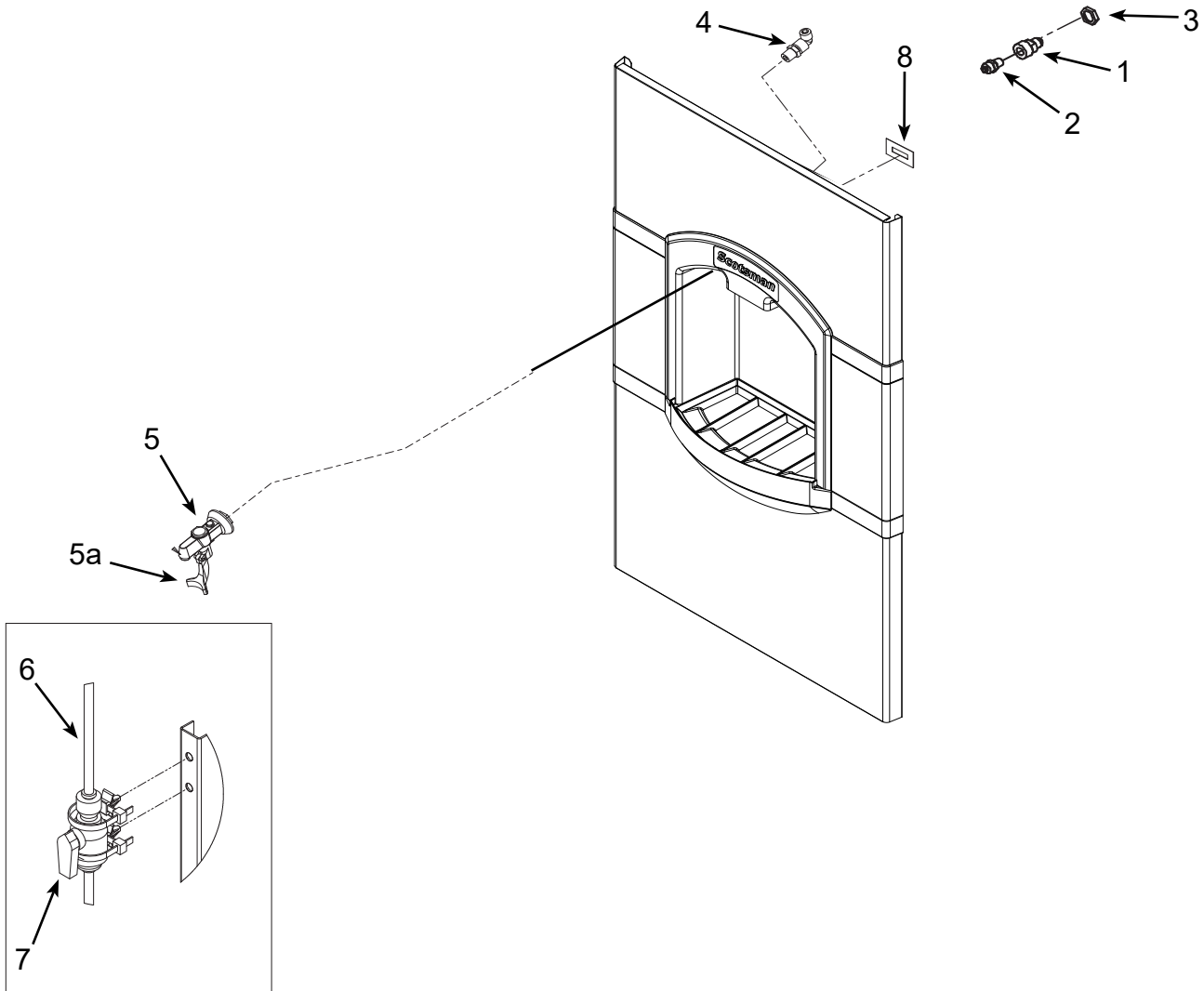
Item Number	Part Number	Description
1.	03-3836-01	Screw
2.	A38357-001	HD30 stiffener
	A38357-002	HD22 stiffener
3.	03-1731-02	Retainer
4.	02-3973-31	HD30 side flange
	02-3973-32	HD22 side flange
5.	A38318-021	HD30 Front panel*
	A38319-021	HD22 Front panel*
6.	12-1213-04	Snap bushing
7.	03-1404-12	Screw
8.	03-1531-01	Screw
9.	19-0503-11	Foam gasket, 6" per side
10.	02-3972-31	Grill

Item Number	Part Number	Description
11	02-3971-33	dispense housing

* includes items 1 thru 4

HD22 and HD30 Service Parts

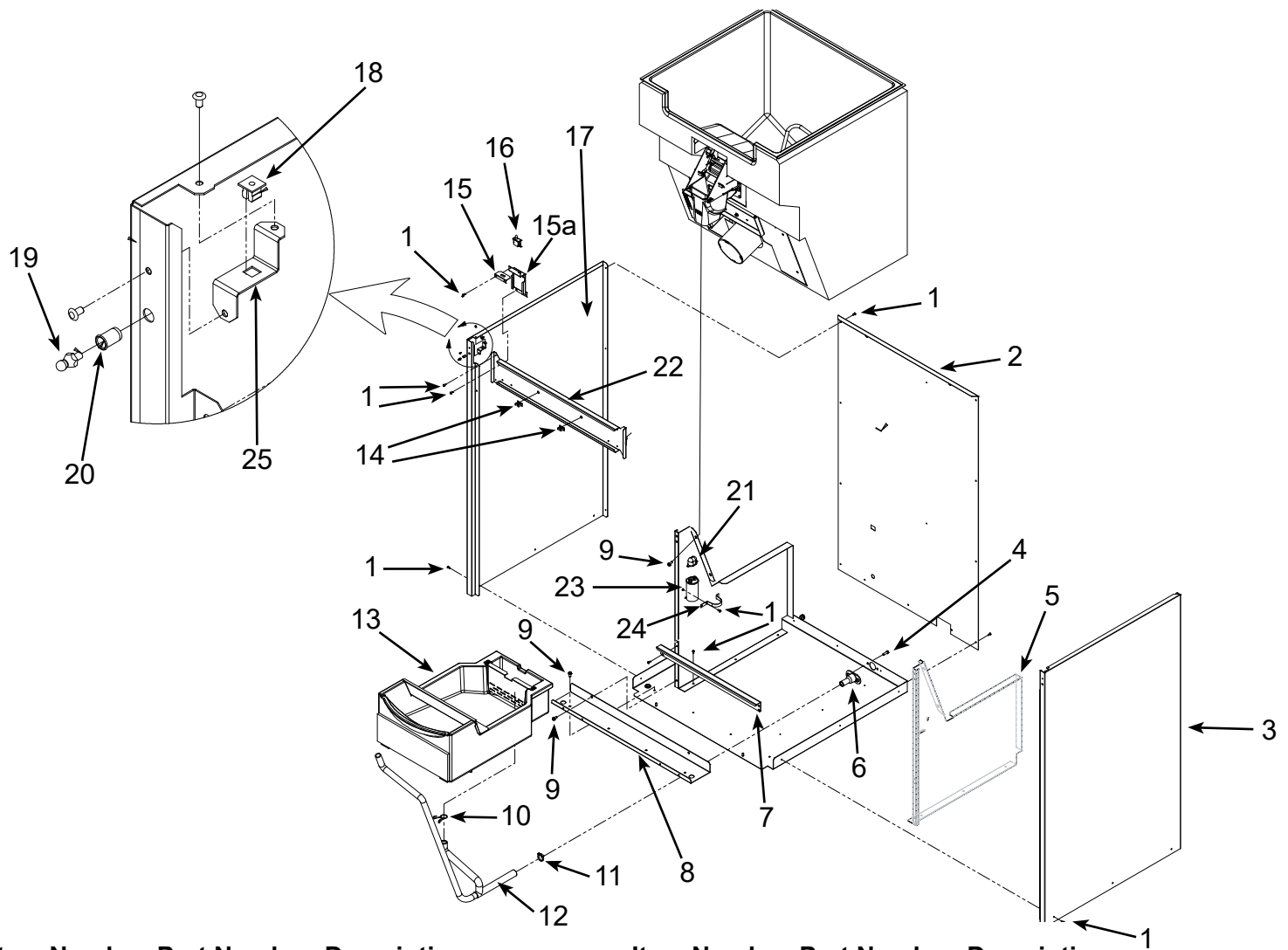
HD22W and HD30W Front Panel & Related Parts



Item Number	Part Number	Description
1.	16-0835-01	Water inlet fitting
2.	16-1039-01	Straight connector
3.	03-1394-01	PAL nut
4.	16-1104-01	Male elbow connector
5.	02-3990-01	Water faucet
5a	02-4754-01	Lever for faucet, clear blue
	02-4753-01	Lever for faucet, dark blue
6.	13-0895-01	Tubing, order per ft
7.	16-1105-01	Shut off valve
8.	A38462-001	Indicator light backing

HD22 and HD30 Service Parts

Side, Back and Interior Panels



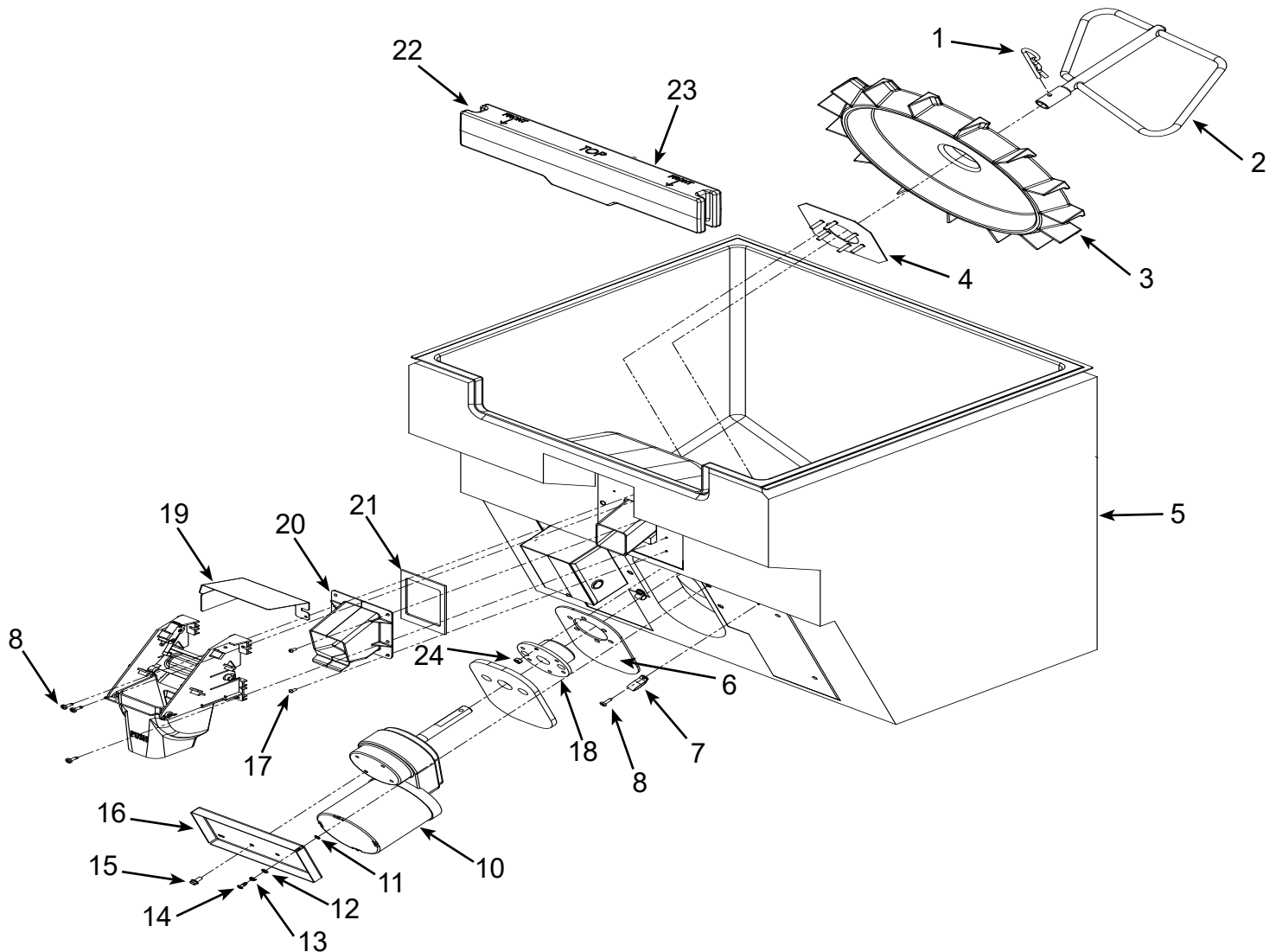
Item Number	Part Number	Description	Item Number	Part Number	Description
1.	03-1531-01	Screw	13.	A38316-021	Drain pan, assembled
2.	A38321-001	HD30 back panel	14.	02-3011-01	Wire clamp (coin mech)
	A38322-001	HD22 back panel	15.	A38435-002	Switch plate top
3.	A38320-022	Right side panel, includes mounting hardware	15a	A38435-001	Switch plate
4.	03-0571-00	Screw	16.	12-2961-01	Switch, interlock
5.	A38325-002	Bin support, right	17.	A38320-021	Left side panel, includes mounting hardware
	A38325-001	Bin support, left	18.	03-3804-01	Plastic nut
6.	02-3692-23	Drain fitting	19.	03-1733-01	Strike (ball stud)
7.	A38348-001	Catch pan support	20.	03-1734-01	Insert
8.	A38362-001	HD30 base stiffener	21.	13-0666-00	Terminal cover
	A38362-002	HD22 base stiffener	22.	A38333-001	HD30 support bracket
9.	03-1645-01	Screw		A38333-002	HD22 support bracket
10.	02-3791-01	Hose clamp	23.	18-1902-68	Motor capacitor
11.	02-2814-09	Hose clamp	24.	A35971-001	Strap
12.	02-3979-01	Drain hose	25.	A38363-001	Clip

March 2026

Page 5

HD22 and HD30 Service Parts

Dispensing Components



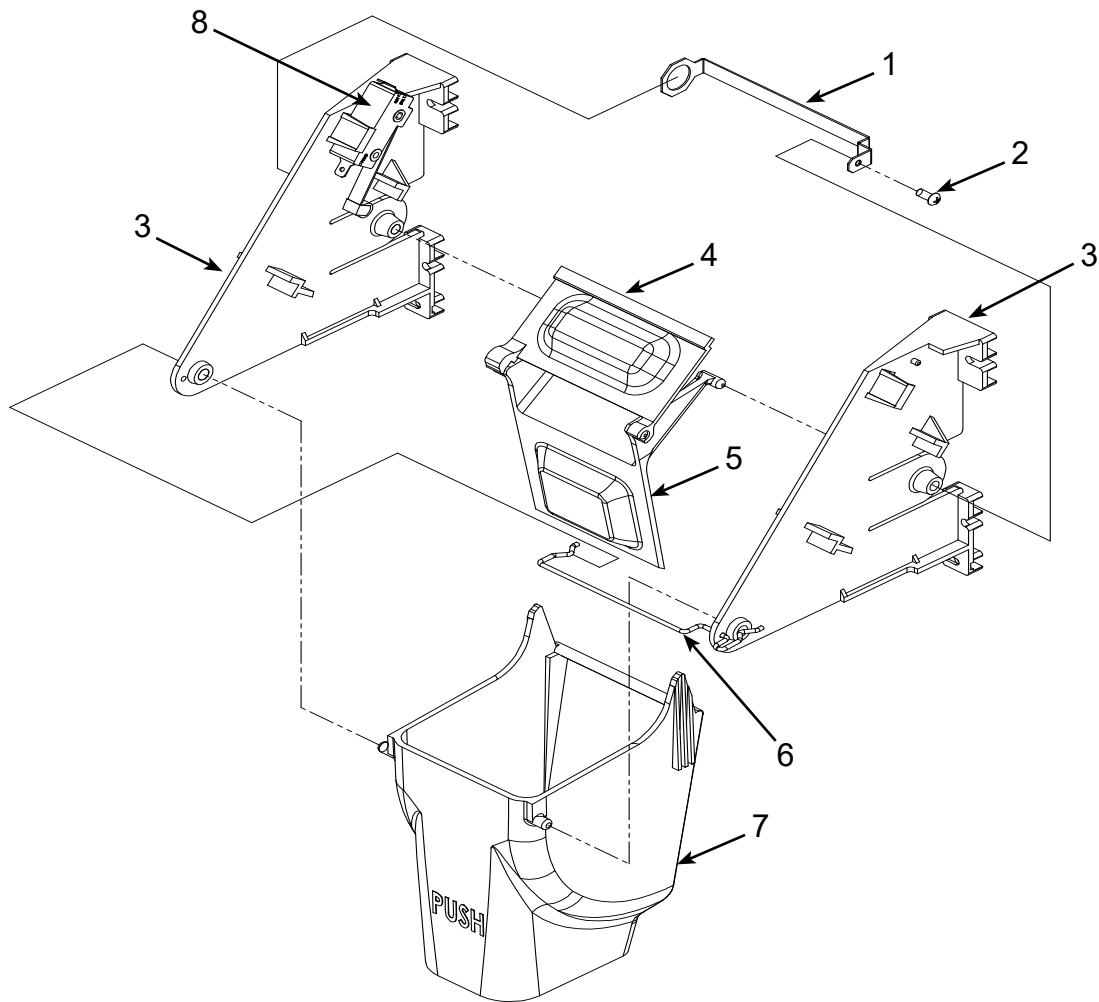
Item Number	Part Number	Description	Item Number	Part Number	Description
1.	03-3837-01	Hitch pin	14.	03-3838-02	¼ turn stud - for units built prior to March 23, 2012
2.	02-3989-01	Sweep arm		03-1405-13	Hex cap screw - for units built after March 23, 2012
3.	02-3040-01	Dispense rotor	15.	03-1645-01	Screw
4.	A38145-001	Hub plate	16.	A38342-001	Mounting plate
5.	A38314-001	HD30 bin assembly	17.	03-1531-01	Screw
	A38314-002	HD22 bin assembly	18.	A34760-001	Hub
6.	13-0940-01	Insulation pad	19.	A38446-001	Switch guard
7.	03-3841-02	Loop clamp	20.	02-3965-01	Spout
8.	03-1404-12	Screw	21.	02-4000-01	Gasket
9.	13-0939-01	Insulation for hub	22.	19-0503-09	Gasket, 4" each end
10.	12-2897-01	Dispense gearmotor, dual voltage	23.	A38341-002	Bin door
11.	03-1731-02	Retainer	24.	03-1406-08	Nut
12.	03-1731-04	Cupped washer			
13.	03-1731-03	Spring			

November 2013

Page 6

HD22 and HD30 Service Parts

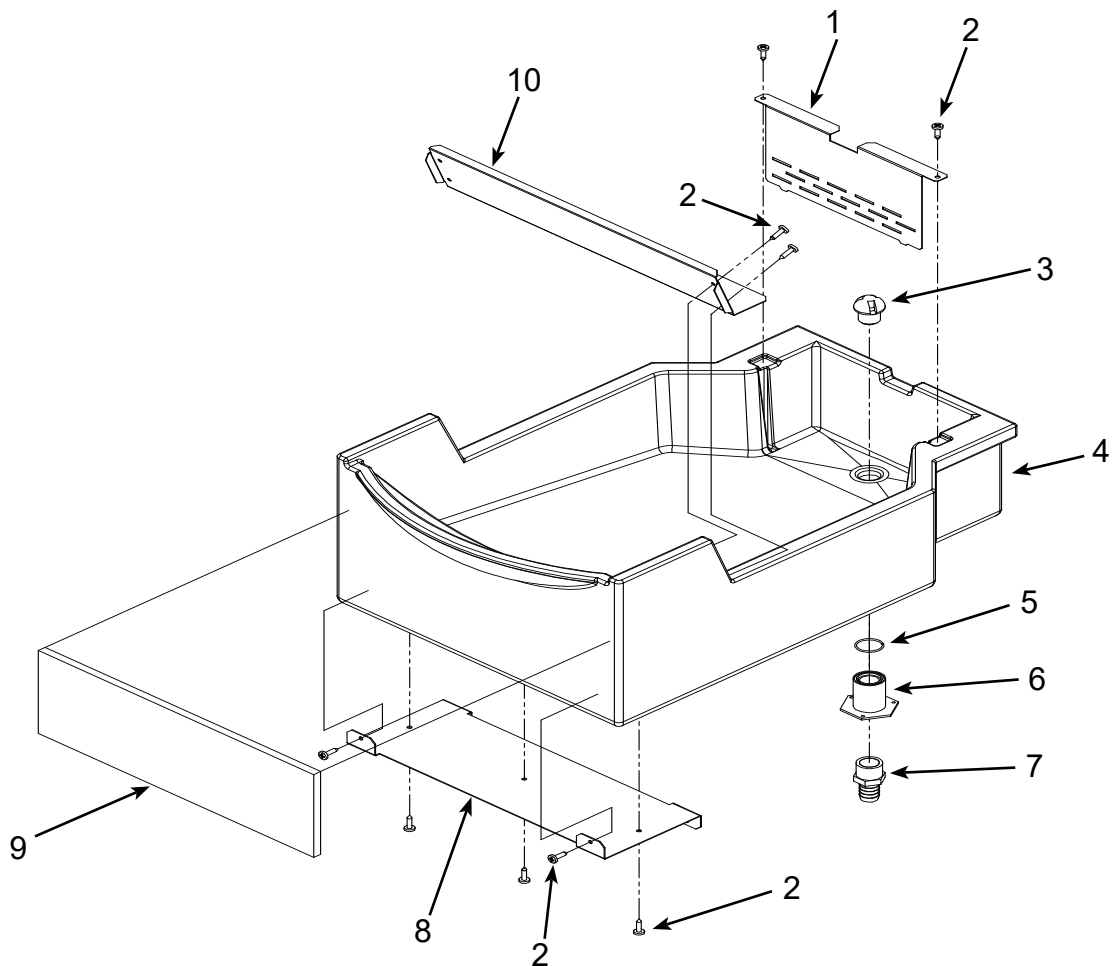
Ice Chute Mechanism



Item Number	Part Number	Description
1.	A38455-001	Clip
2.	03-1531-01	Screw
3.	02-3964-01	Bracket
4.	02-3963-01	Door lock
5.	02-3962-01	Door
6.	02-3970-01	Wire
7.	02-3961-01	Dispense chute
8.	12-2879-01	Vend switch, 60 Hz
	12-2958-01	Vend switch, 50 Hz, CE only

HD22 and HD30 Service Parts

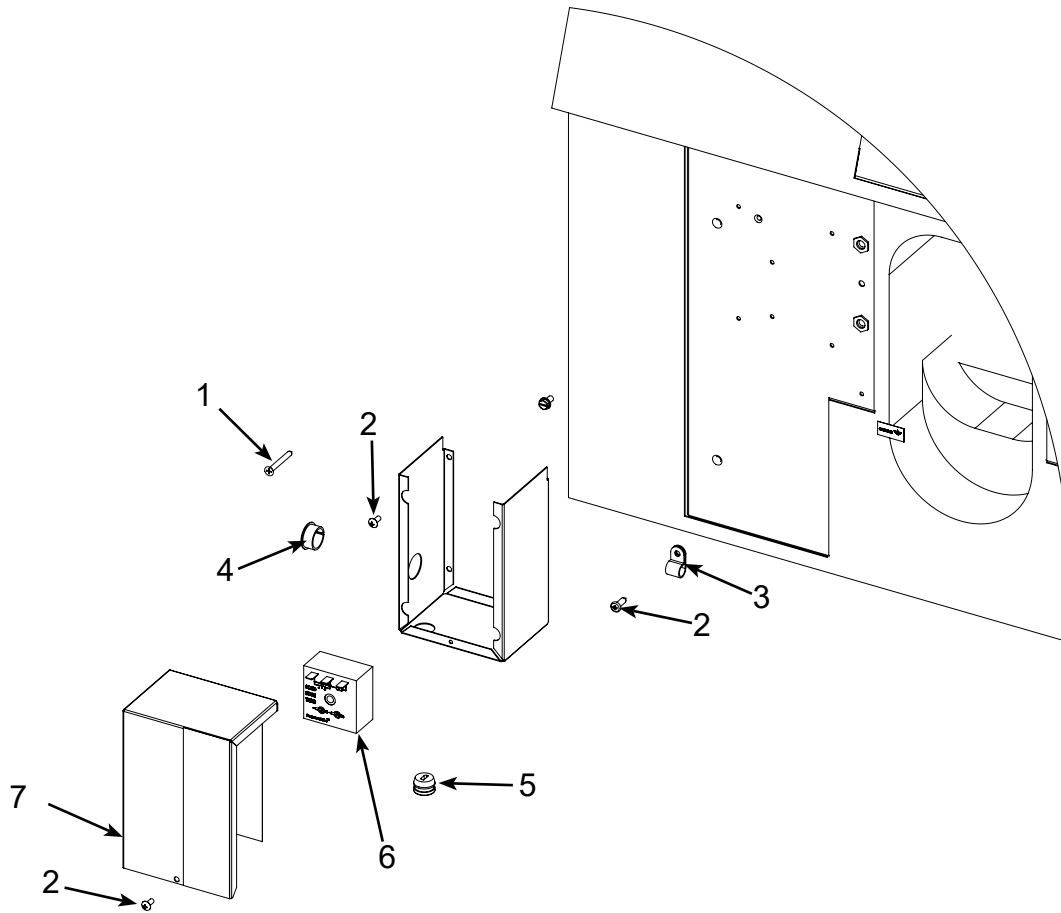
Ice Catch Pan



Item Number	Part Number	Description
1.	A38332-001	Screen
2.	03-1404-12	Screw
3.	02-2809-02	Drain top
4.	A38316-021	Complete assembly as shown
5.	02-4193-01	Flat washer
6.	02-3201-01	Drain bottom
7.	16-1099-01	Drain fitting
8.	A38454-001	Drain pan bracket
9.	02-3999-01	Foam pad
10.	A38447-001	Drain guard

HD22 and HD30 Service Parts

Control Box



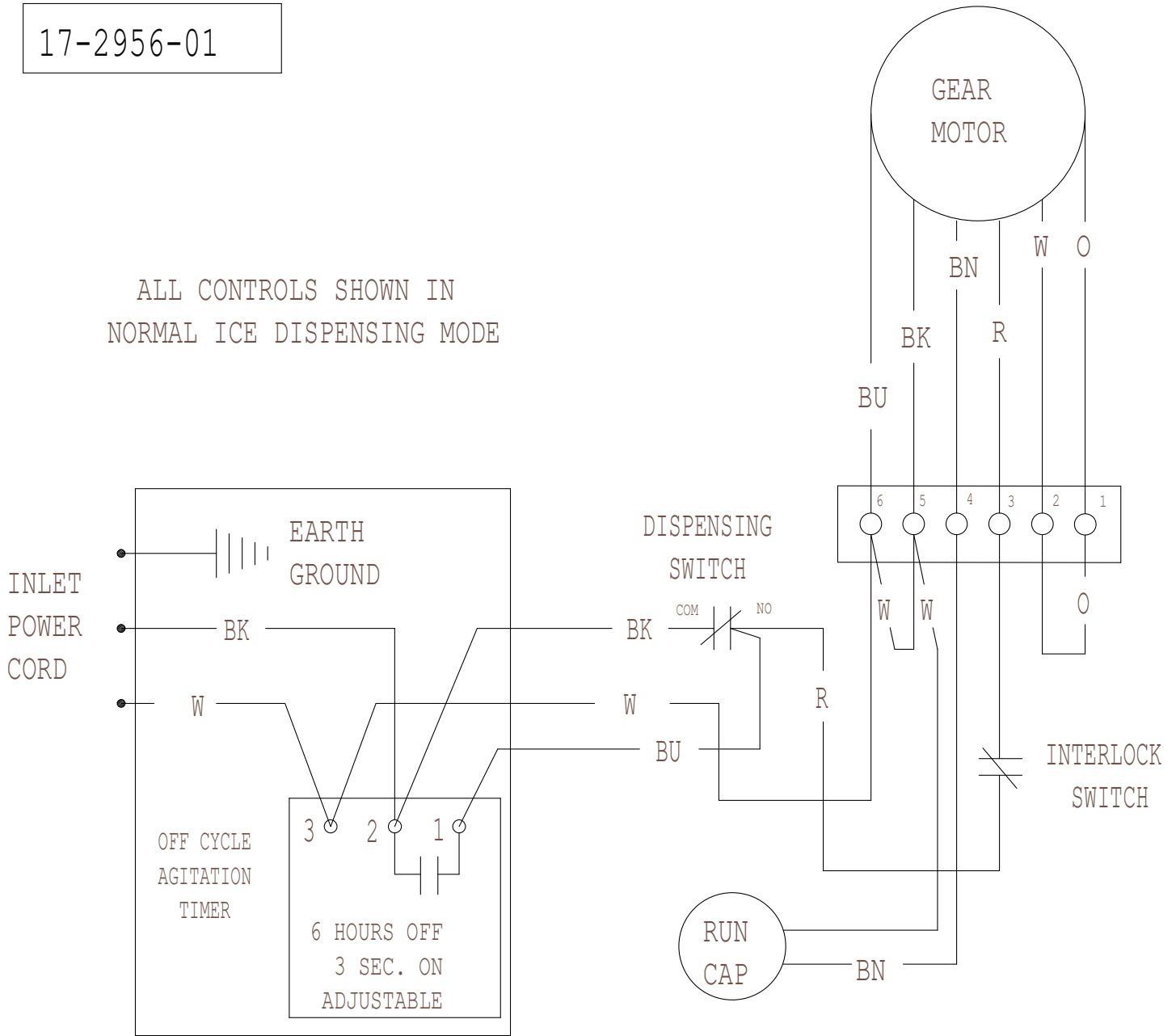
Item Number	Part Number	Description
1.	03-1419-16	Screw
2.	03-1531-01	Screw
3.	03-3841-01	Loop clamp
4.	12-1213-10	Snap bushing
5.	12-0629-08	Strain relief
6.	12-2881-01	60 Hz off cycle timer
	12-2881-02	50 Hz off cycle timer
7.	A38330-001	Control box cover
8.	12-2880-01	60 Hz harness, basic and water
	12-2904-01	50 Hz harness
9.	12-1638-20	115 volt power cord
	12-1638-18	230 volt power cord

HD22 and HD30 Service Parts

Wiring Diagram, 115 volt, 60 Hz Basic and Water Station

17-2956-01

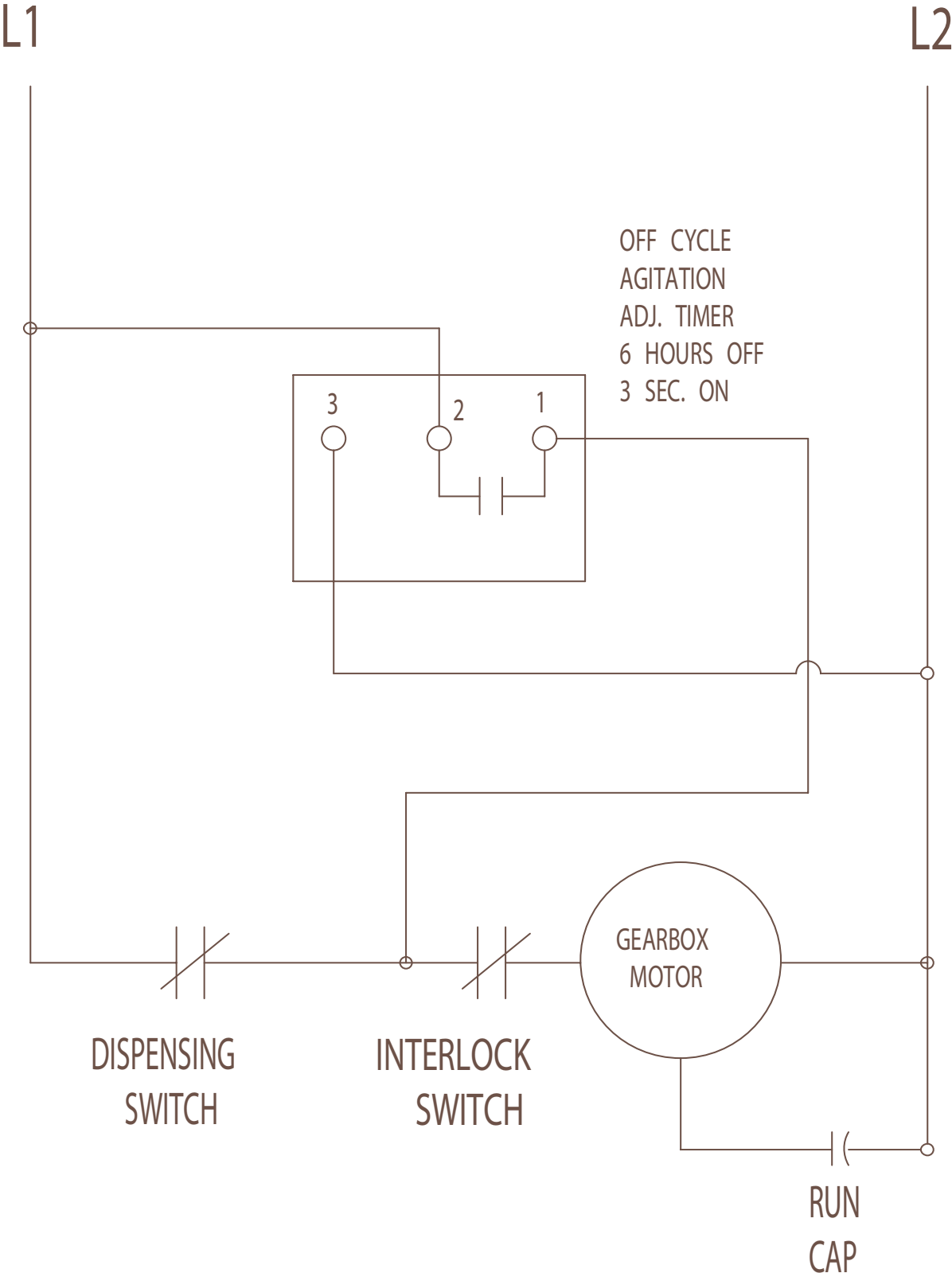
ALL CONTROLS SHOWN IN
NORMAL ICE DISPENSING MODE



USE COPPER CONDUCTORS ONLY

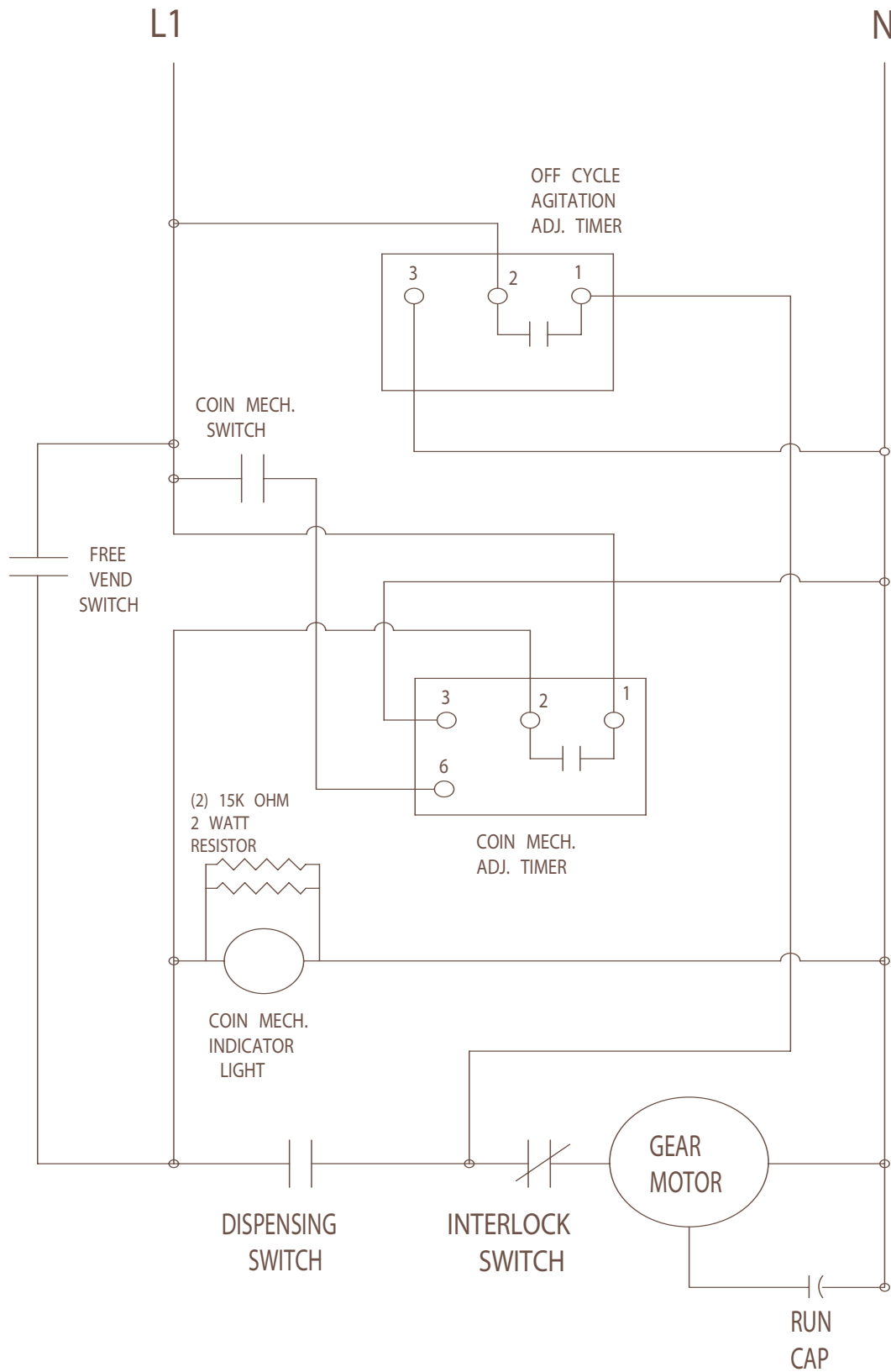
HD22 and HD30 Service Parts

Schematic Diagram, Basic and Water Station Models



HD22 and HD30 Service Parts

Schematic Diagram for Coin Mechanism Model



HD22 and HD30 Service Parts

Wiring Diagram for Coin Mechanism Model after 2006 coin mech timer change

