

# HD22 and HD30 Service Parts

This is the list of service parts and wiring diagrams for all versions of these two hotel dispensers.

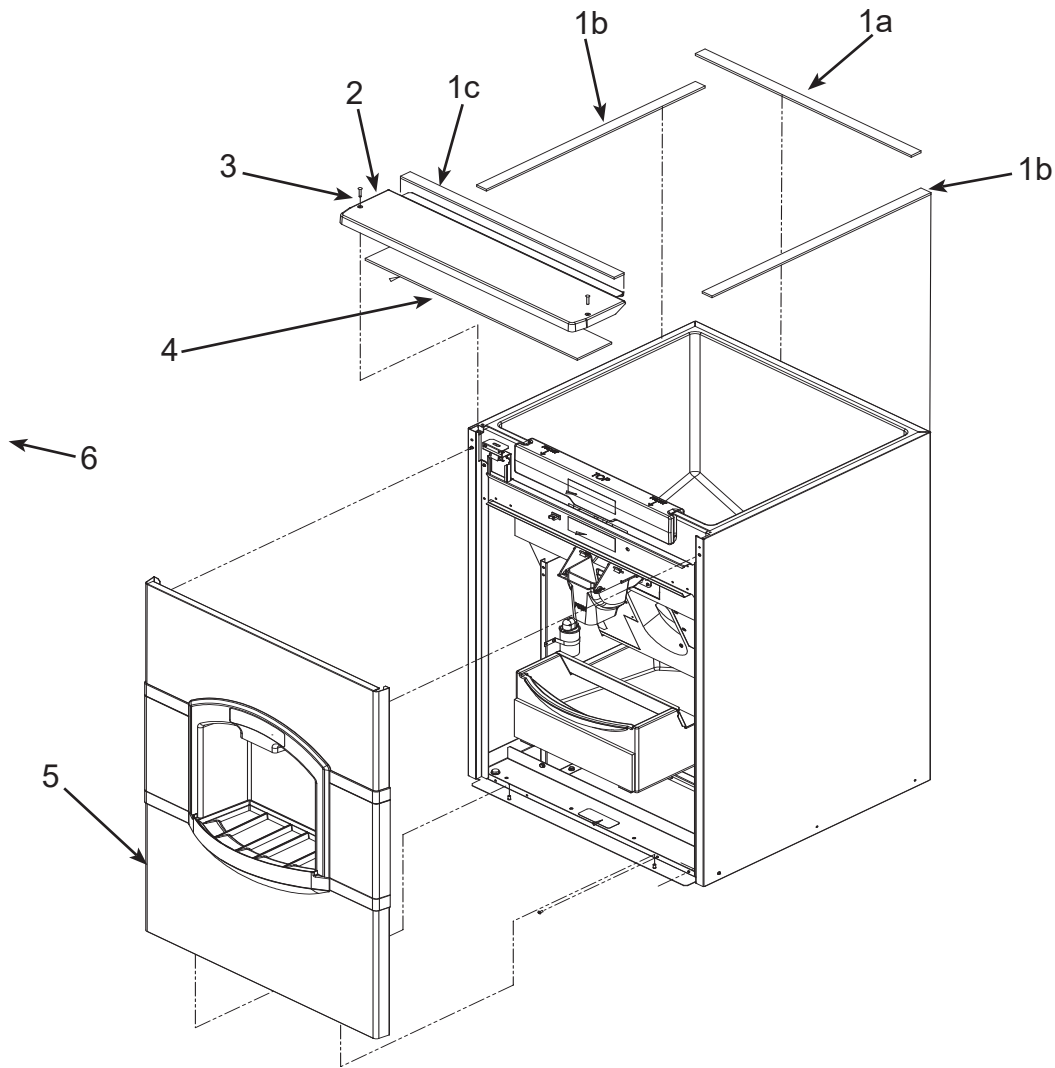
Pay close attention to the voltage and/or cycles to be sure of ordering the correct part.

## Contents

Front and Top Panels .....	2
HD30B & HD22B Front Panel .....	3
HD30N and HD30W Front Panel & Related Parts .....	4
Side, Back and Interior Panels .....	5
Dispensing Components .....	6
Ice Chute Mechanism.....	7
Ice Catch Pan.....	8
Control Box.....	9
Wiring Diagram, 115 volt, 60 Hz Basic and Water Station.....	10
Schematic Diagram, Basic and Water Station Models .....	11
Wiring Diagram, 230 volt, 50 Hz Basic.....	12
Wiring Diagram for Coin Mechanism Model.....	13
Schematic Diagram for Coin Mechanism Model .....	14
Wiring Diagram for Coin Mechanism Model after 2006.....	15

# HD22 and HD30 Service Parts

## Front and Top Panels

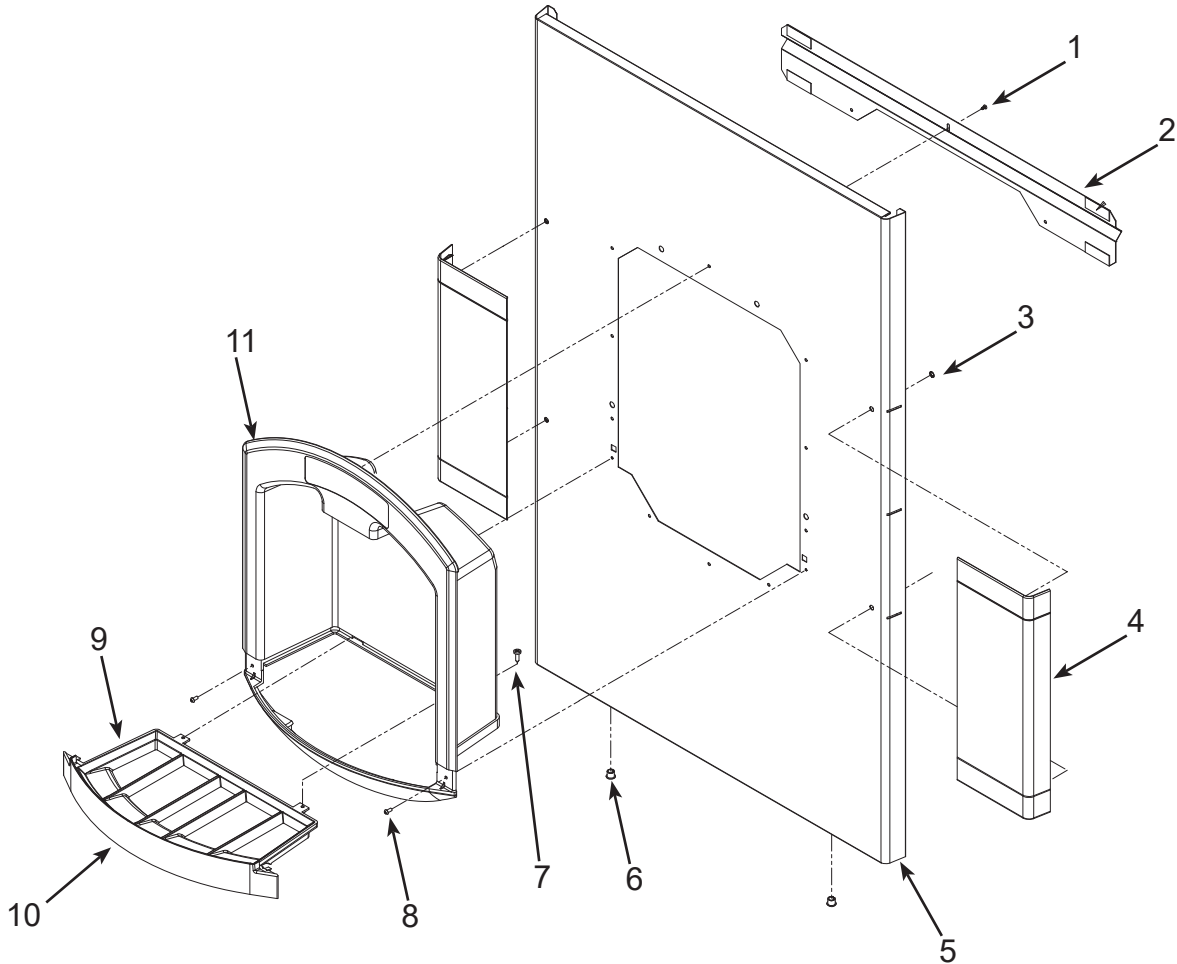


Item Number	Part Number	Description
1.	19-0503-04	Gasket tape, order by ft.
1a	Use 27.5" for HD30, 19.5" for HD22	
1b	Use 27.88"	
1c	Use 27.25" for HD30, 19.25" for HD22	
2.	02-3997-31	HD30 top panel
	02-3997-33	HD22 top panel
3.	03-1735-03	Top panel screw
4.	02-3998-01	HD30 panel insulation
	02-3998-02	HD22 panel insulation
5.	A38318-021	HD30B or HD30W front panel with side flanges
	A38318-023	HD30N front panel with side flanges

Item Number	Part Number	Description
	A38319-021	HD22 front panel with side flanges
Note: Item 5 does not include sink / drip tray components. See next page for accurate illustration.		
6a	A39516-001	HD30 Support brace, use began June 2008, fits slots in top of side panels, slots also added at that time. Kit to add to prior models: A39517-021.
6b	A39517-022	HD22 support brace kit

# HD22 and HD30 Service Parts

## HD30B & HD22B Front Panel

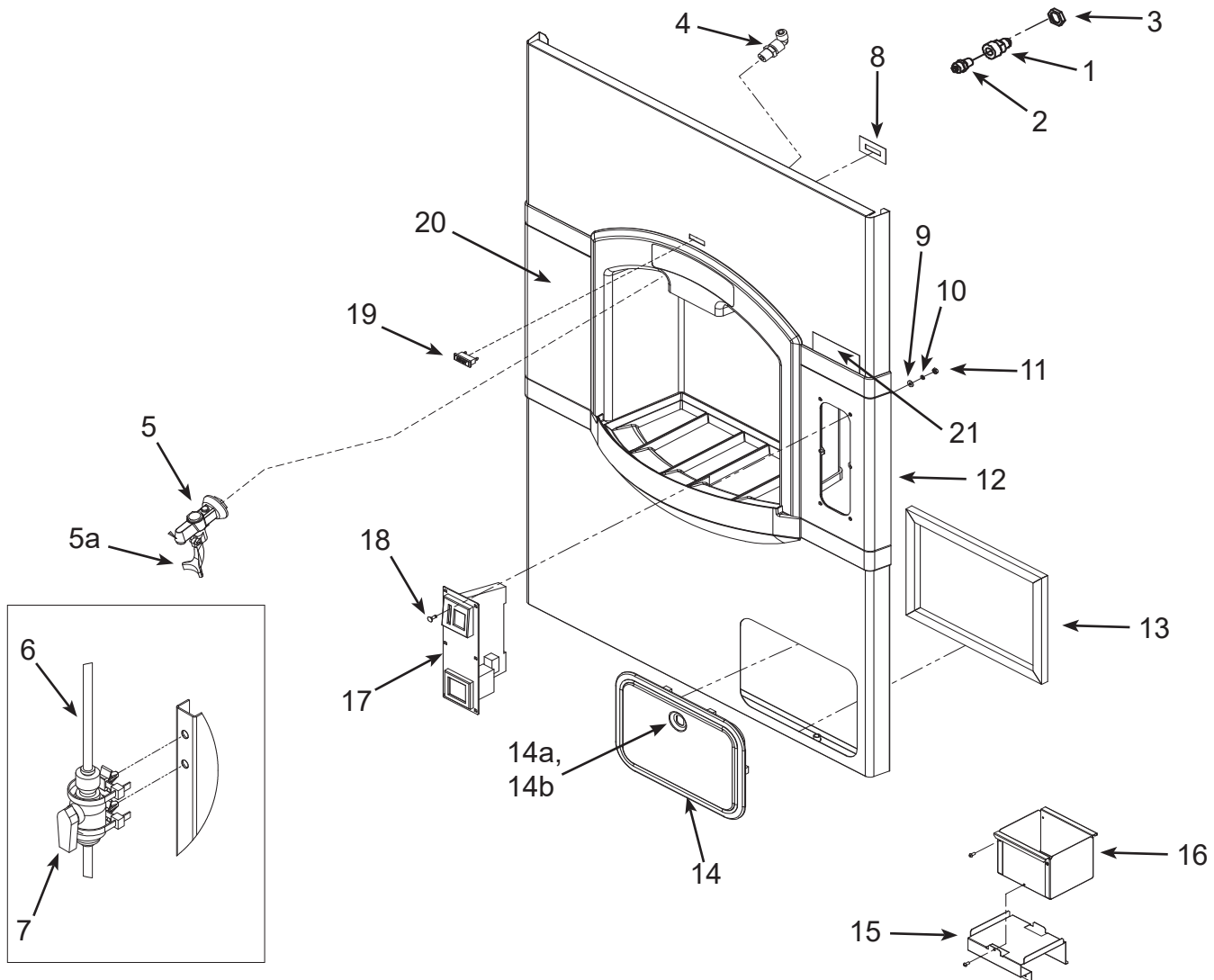


Item Number	Part Number	Description	Item Number	Part Number	Description
1.	03-3836-01	Screw	11a	02-3971-31	HD22, HD30B, HD30N dispense housing
2.	A38357-001	HD30 stiffener	11b	02-3971-33	HD30W dispense housing
	A38357-002	HD22 stiffener			
3.	03-1731-02	Retainer			
4.	02-3973-31	HD30B side flange			
	02-3973-32	HD22 side flange			
5.	A38318-021	HD30 Front panel*			
	A38319-021	HD22 Front panel*			
6.	12-1213-04	Snap bushing			
7.	03-1404-12	Screw			
8.	03-1531-01	Screw			
9.	19-0503-11	Foam gasket, 6" per side			
10.	02-3972-01	Grill			

\* includes items 1 thru 4

# HD22 and HD30 Service Parts

## HD30N and HD30W Front Panel & Related Parts



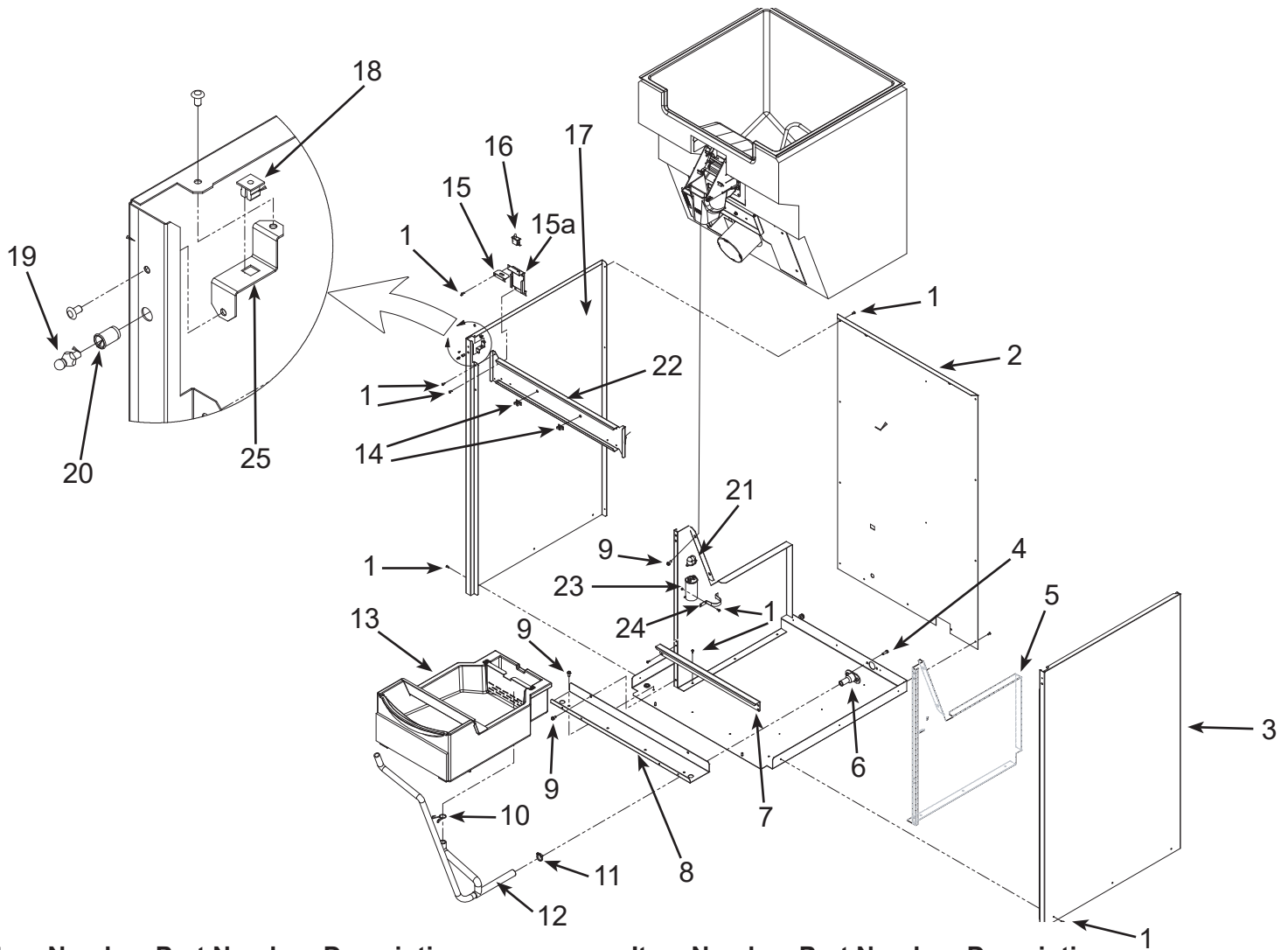
Item Number	Part Number	Description	Item Number	Part Number	Description
1.	16-0835-01	Water inlet fitting	13.	01-1295-01	Door shim
2.	16-1039-01	Straight connector	14.	12-2896-02	Door and lock
3.	03-1394-01	Pal nut	14a	12-2896-26	Lock and key
4.	16-1104-01	Male elbow connector	14b	12-2896-27	Key
5.	02-3990-01	Water faucet	15.	03-1531-01	Coin box screw
5a	02-4754-01	Lever for faucet, clear blue	16.	A38438-001	Coin box
	02-4753-01	Lever for faucet, dark blue	17.	12-2896-01	Coin mechanism
6.	13-0895-01	Tubing, order per ft		12-2896-25	Coin switch
7.	16-1105-01	Shut off valve	18.	12-2896-03	Mounting screw
8.	A38462-001	Indicator light backing	19.	12-2908-01	Ready light
9.	03-1407-02	Washer for coin mech	20.	02-3973-01	HD30 left side flange
10.	03-1410-07	Lockwasher	21.	17-2970-01	Coin mech label
11.	03-1406-04	Hex nut (8-32)			
12.	02-3973-05	Right side flange for coin mech model			

November 2013

Page 4

# HD22 and HD30 Service Parts

## Side, Back and Interior Panels



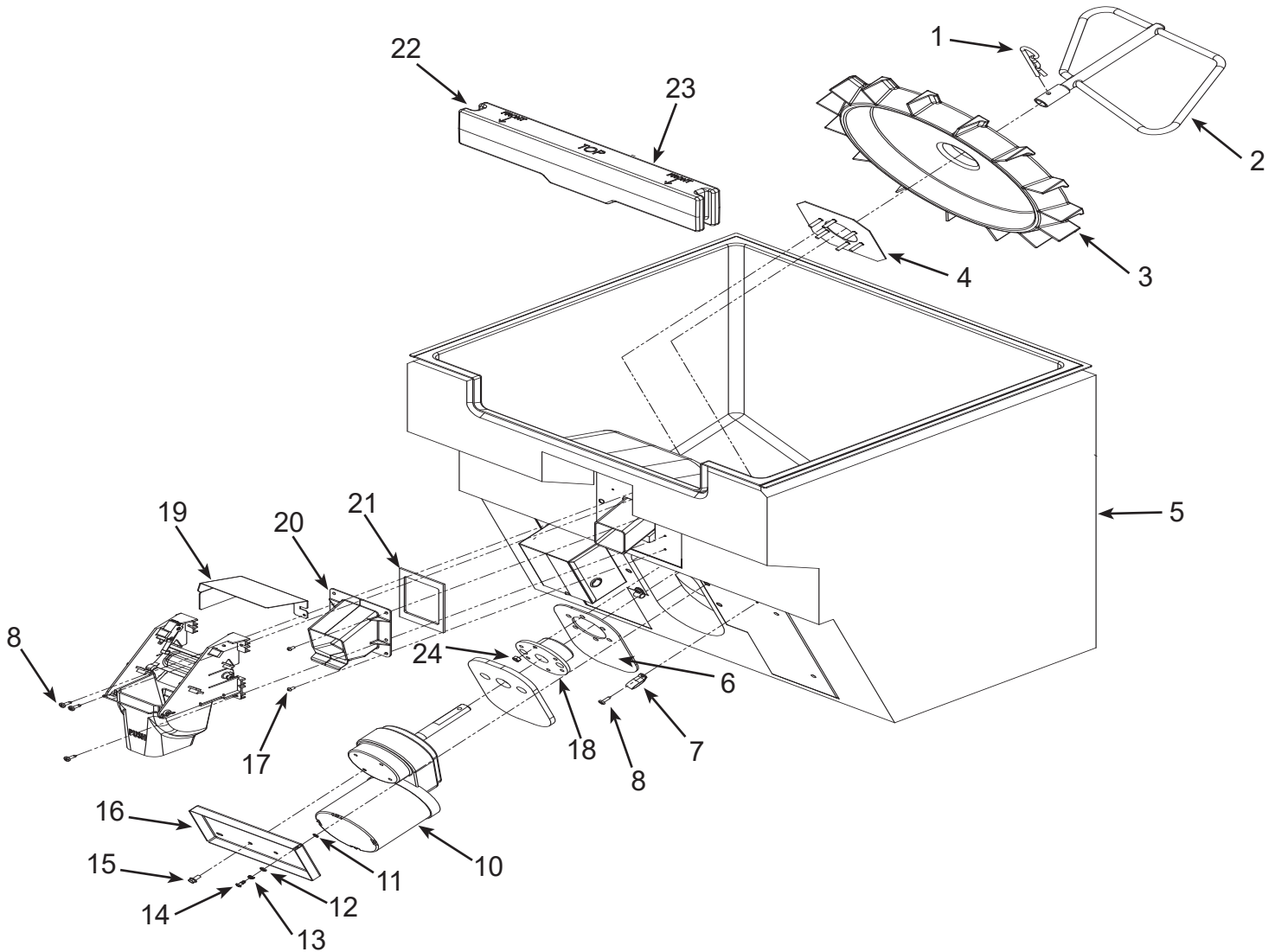
Item Number	Part Number	Description	Item Number	Part Number	Description
1.	03-1531-01	Screw	13.	A38316-021	Drain pan, assembled
2.	A38321-001	HD30 back panel	14.	02-3011-01	Wire clamp (coin mech)
	A38322-001	HD22 back panel	15.	A38435-002	Switch plate top
3.	A38320-022	Right side panel, includes mounting hardware	15a	A38435-001	Switch plate
4.	03-0571-01	Screw	16.	12-2961-01	Switch, interlock
5.	A38325-002	Bin support, right	17.	A38320-021	Left side panel, includes mounting hardware
	A38325-001	Bin support, left	18.	03-3804-01	Plastic nut
6.	02-3692-23	Drain fitting	19.	03-1733-01	Strike (ball stud)
7.	A38348-001	Catch pan support	20.	03-1734-01	Insert
8.	A38362-001	HD30 base stiffener	21.	13-0666-00	Terminal cover
	A38362-002	HD22 base stiffener	22.	A38333-001	HD30 support bracket
9.	03-1645-01	Screw		A38333-002	HD22 support bracket
10.	02-3791-01	Hose clamp	23.	18-1902-68	Motor capacitor
11.	02-2814-09	Hose clamp	24.	A35971-001	Strap
12.	02-3979-01	Drain hose	25.	A38363-001	Clip

March 2026

Page 5

# HD22 and HD30 Service Parts

## Dispensing Components



Item Number	Part Number	Description
1.	03-3837-01	Hitch pin
2.	02-3989-01	Sweep arm
3.	02-3040-01	Dispense rotor
4.	A38145-001	Hub plate
5.	A38314-001	HD30 bin assembly
	A38314-002	HD22 bin assembly
6.	13-0940-01	Insulation pad
7.	03-3841-02	Loop clamp
8.	03-1404-12	Screw
9.	13-0939-01	Insulation for hub
10.	12-2897-01	Dispense gearmotor, dual voltage
11.	03-1731-02	Retainer
12.	03-1731-04	Cupped washer
13.	03-1731-03	Spring

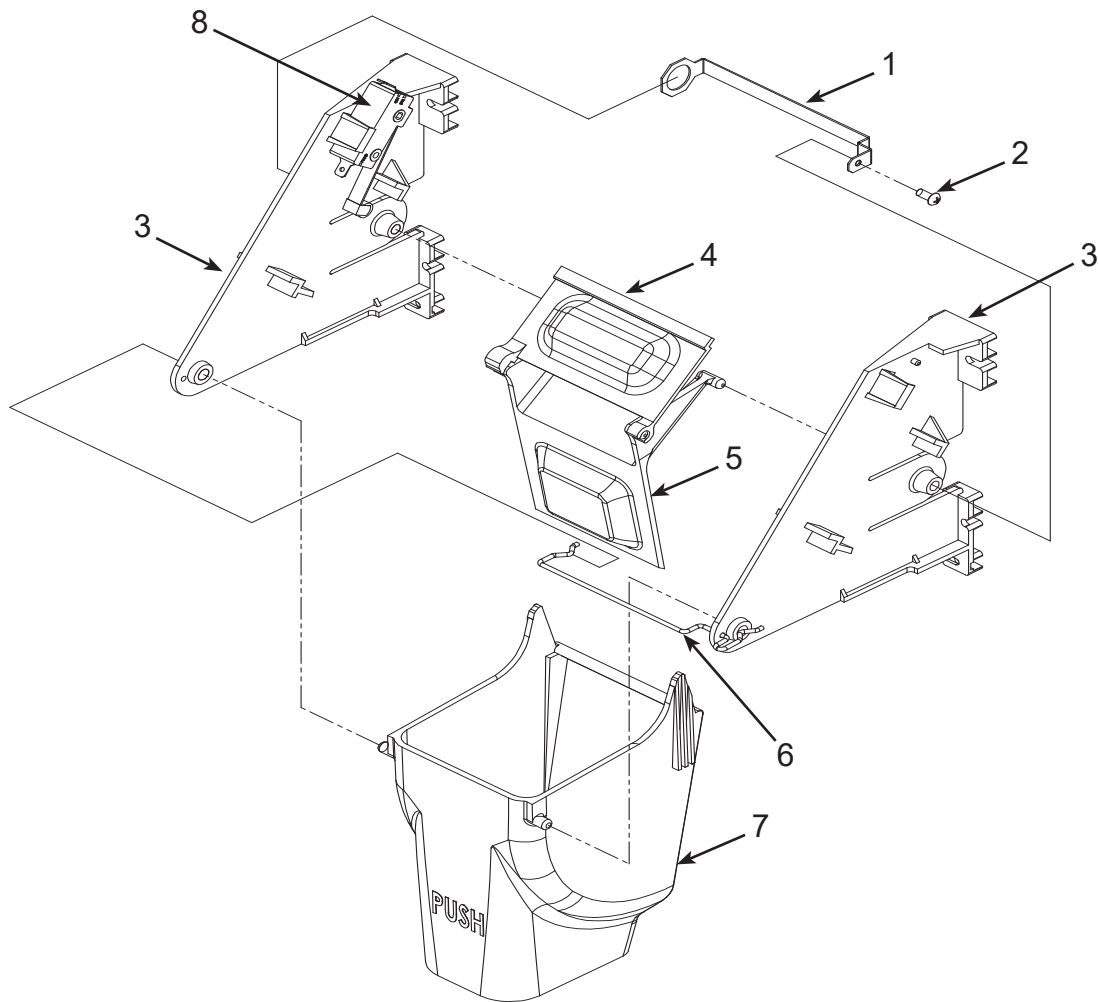
Item Number	Part Number	Description
14.	03-3838-02	¼ turn stud - for units built prior to March 23, 2012
	03-1405-13	Hex cap screw - for units built after March 23, 2012
15.	03-1645-01	Screw
16.	A38342-001	Mounting plate
17.	03-1531-01	Screw
18.	A34760-001	Hub
19.	A38446-001	Switch guard
20.	02-3965-01	Spout
21.	02-4000-01	Gasket
22.	19-0503-09	Gasket, 4" each end
23.	A38341-002	Bin door
24.	03-1406-08	Nut

November 2013

Page 6

# HD22 and HD30 Service Parts

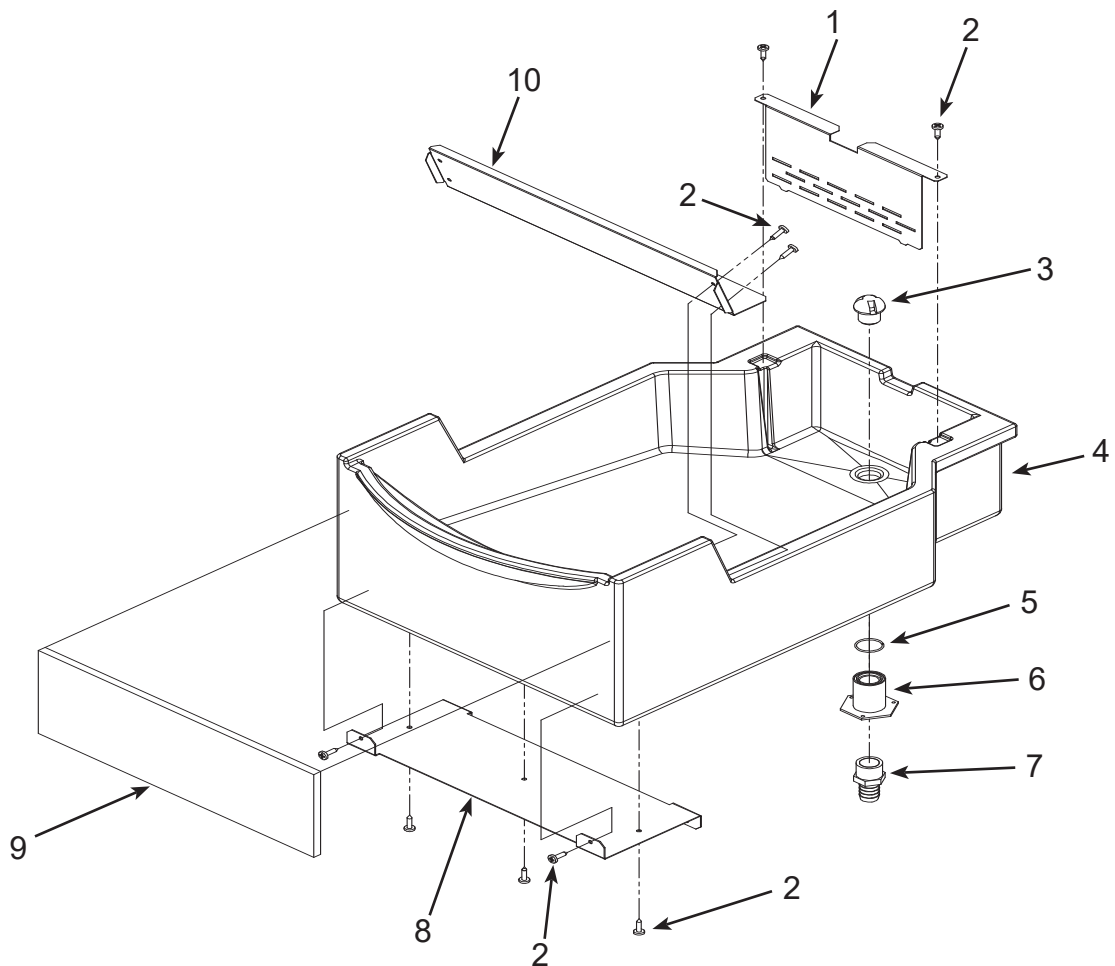
## Ice Chute Mechanism



Item Number	Part Number	Description
1.	A38455-001	Clip
2.	03-1531-01	Screw
3.	02-3964-01	Bracket
4.	02-3963-01	Door lock
5.	02-3962-01	Door
6.	02-3970-01	Wire
7.	02-3961-01	Dispense chute
8.	12-2879-01	Vend switch, 60 Hz
	12-2958-01	Vend switch, 50 Hz, CE only

# HD22 and HD30 Service Parts

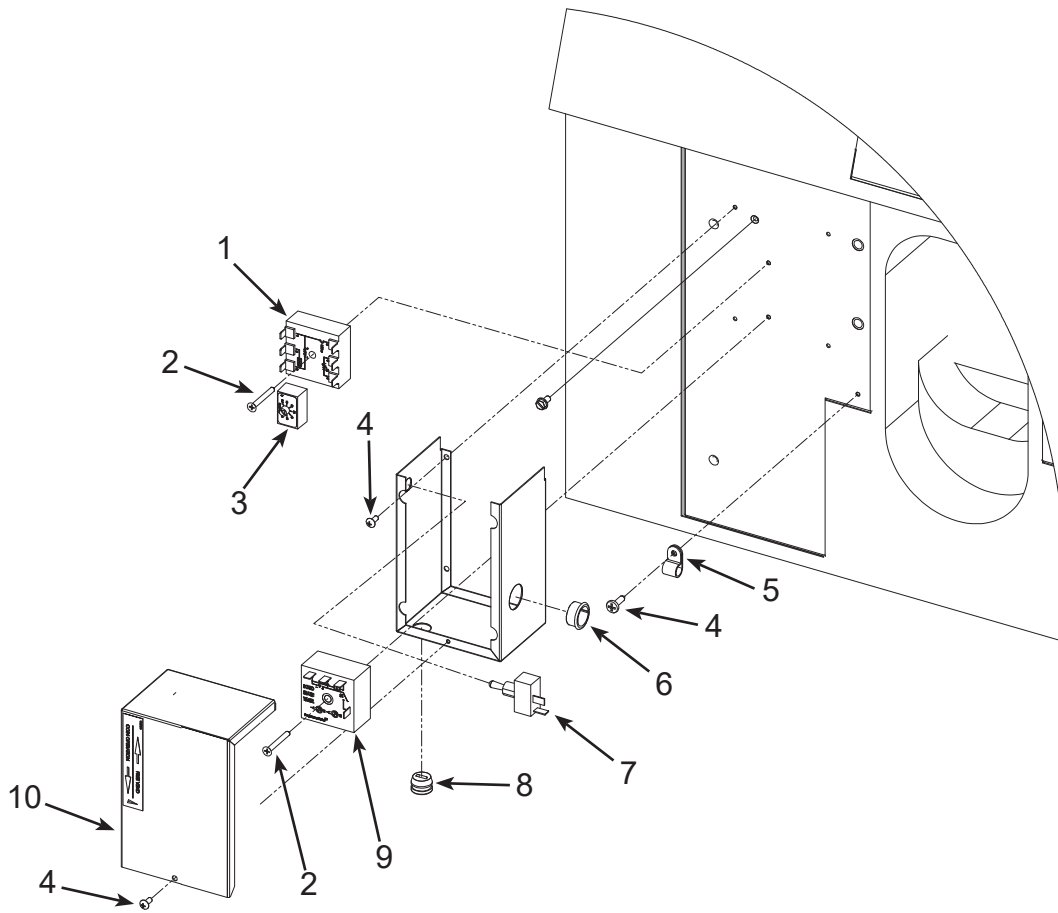
## Ice Catch Pan



Item Number	Part Number	Description
1.	A38332-001	Screen
2.	03-1404-12	Screw
3.	02-2809-02	Drain top
4.	A38316-021	Complete assembly as shown
5.	02-4193-01	Flat washer
6.	02-3201-01	Drain bottom
7.	16-1099-01	Drain fitting
8.	A38454-001	Drain pan bracket
9.	02-3999-01	Foam pad
10.	A38447-001	Drain guard

# HD22 and HD30 Service Parts

## Control Box



Item Number	Part Number	Description
1.	12-2948-21	Coin mech timer*
2.	03-1419-16	Screw
3.	part of item 1	
4.	03-1531-01	Screw
5.	03-3841-01	Loop clamp
6.	12-1213-10	Snap bushing
7.	12-2637-01	Free vend switch
8.	12-0629-08	Strain relief
9.	12-2881-01	60 Hz off cycle timer
	12-2881-02	50 Hz off cycle timer
10.	A38330-001	Control box cover
11.	12-2880-01	60 Hz harness, basic and water
	12-2891-01	Coin mech harness
	12-2904-01	50 Hz harness
12.	12-1638-20	115 volt power cord
	12-1638-18	230 volt power cord

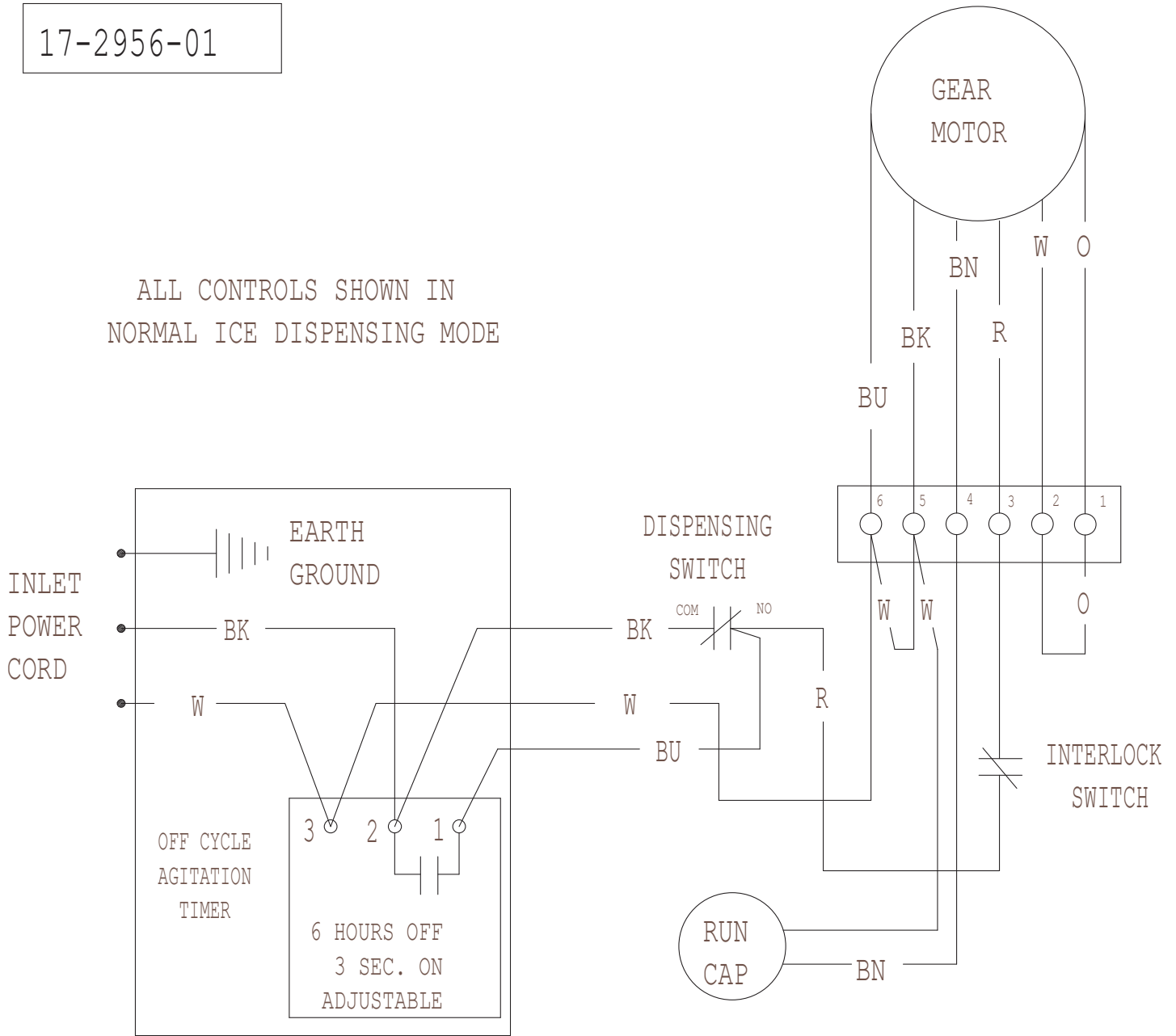
\* Note: Use of this timer includes a wiring change. Prior timers had separate adjustment modules and used the wiring diagram on page 13. Refer to page 15 for wiring of this timer.

# HD22 and HD30 Service Parts

## Wiring Diagram, 115 volt, 60 Hz Basic and Water Station

17-2956-01

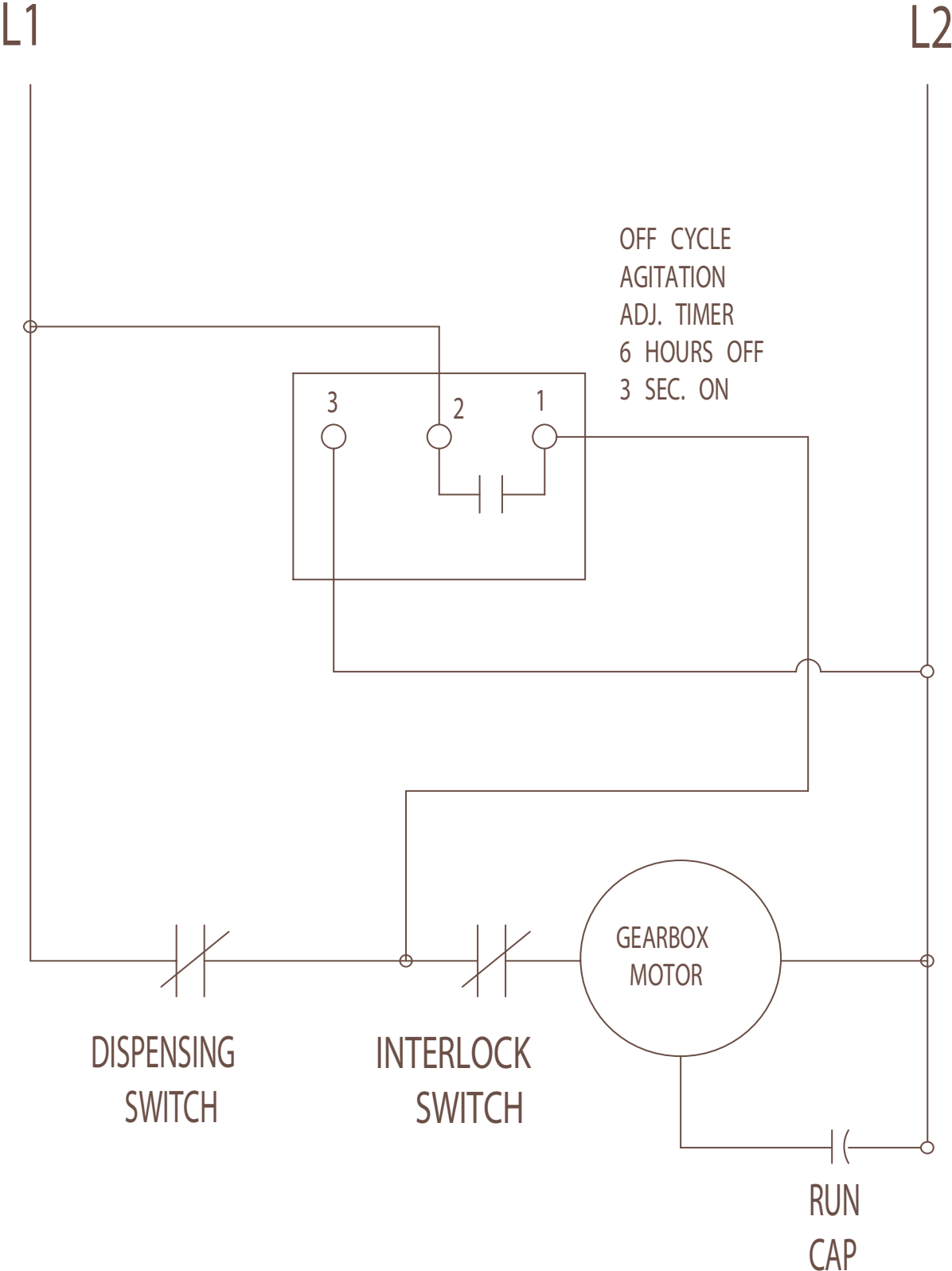
ALL CONTROLS SHOWN IN  
NORMAL ICE DISPENSING MODE



USE COPPER CONDUCTORS ONLY

# HD22 and HD30 Service Parts

## Schematic Diagram, Basic and Water Station Models

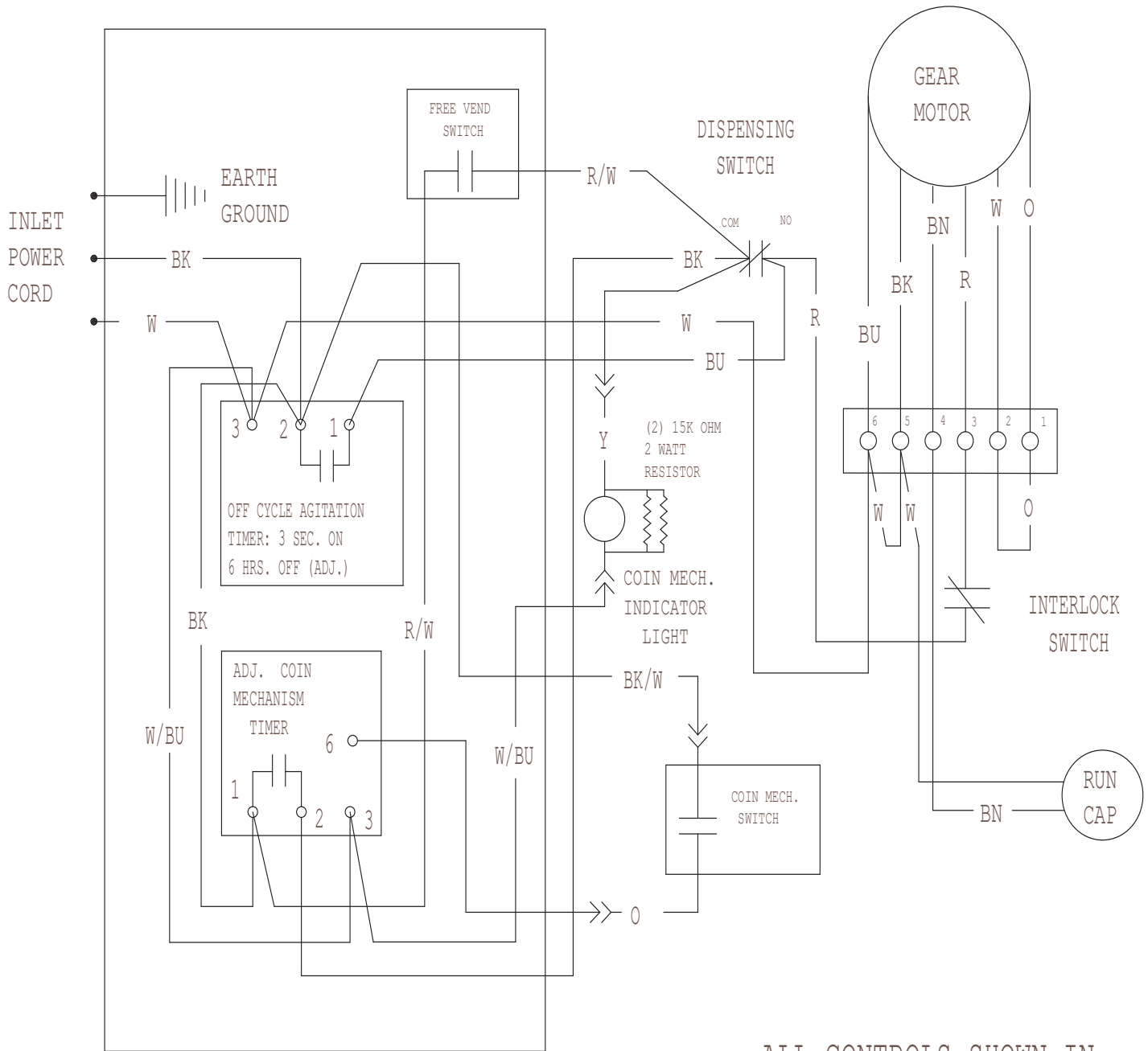




# HD22 and HD30 Service Parts

## Wiring Diagram for Coin Mechanism Model , with prior coin mech timer

17-2967-01

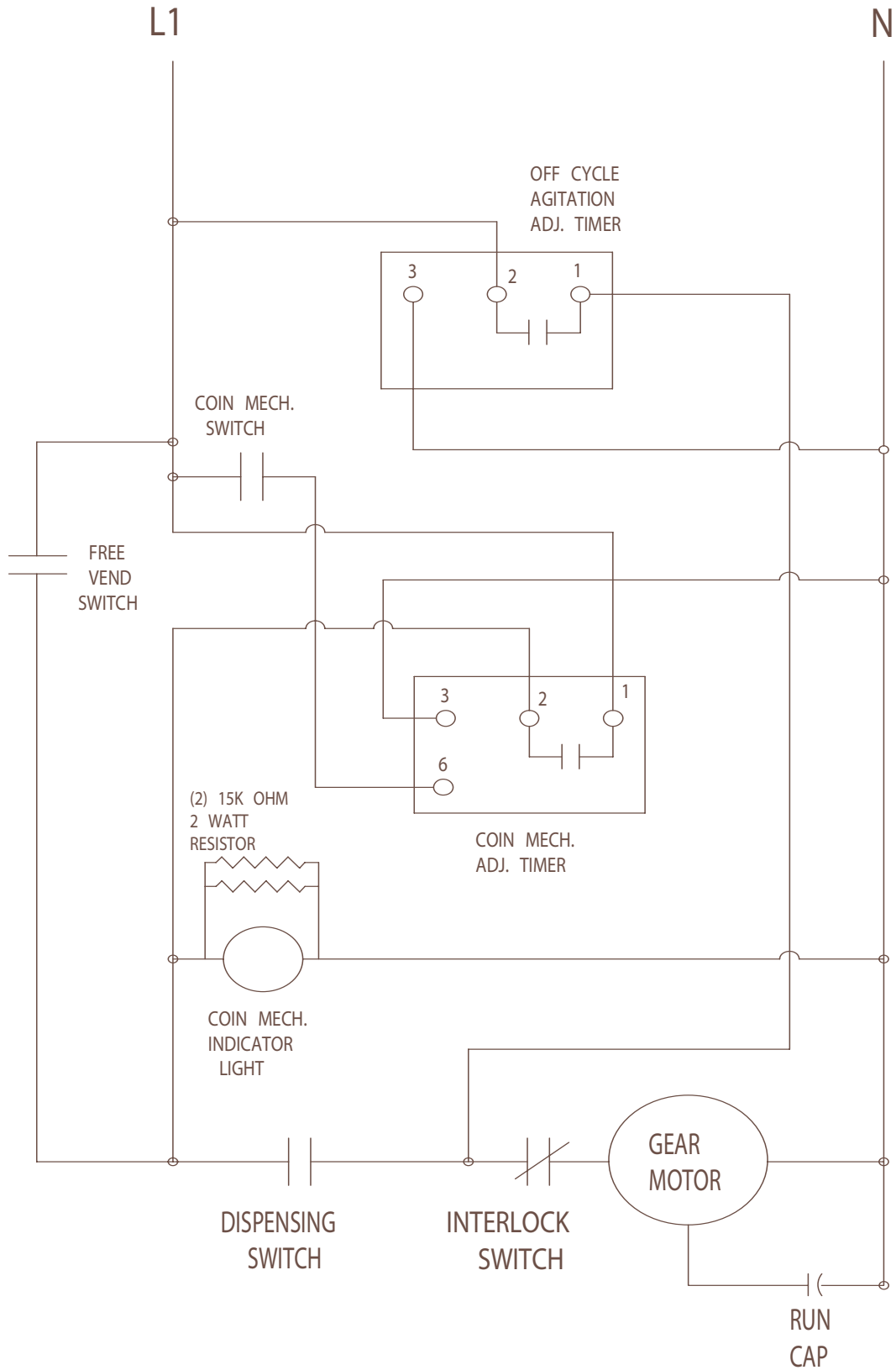


USE COPPER CONDUCTORS ONLY

ALL CONTROLS SHOWN IN  
NORMAL ICE DISPENSING MODE

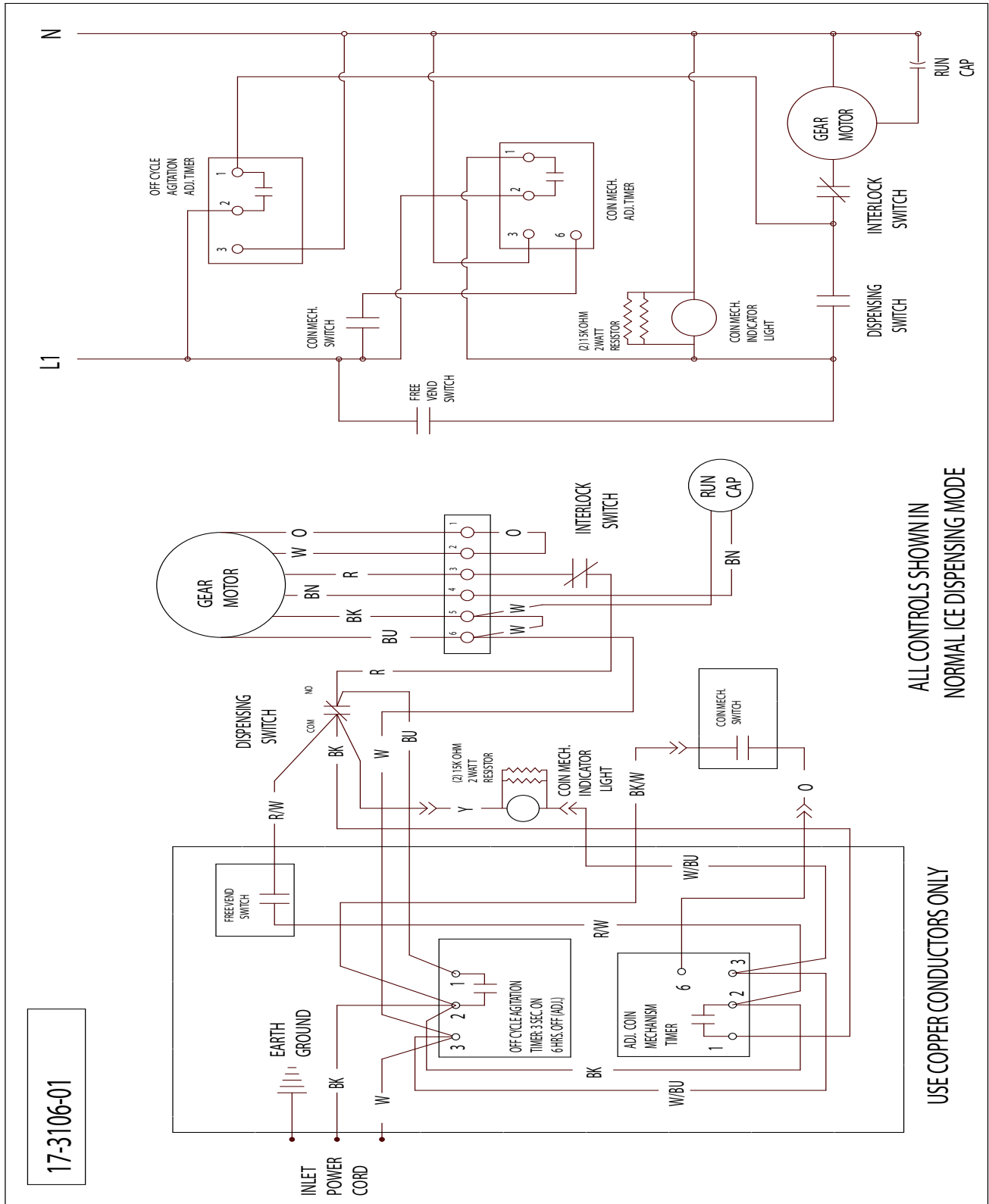
# HD22 and HD30 Service Parts

## Schematic Diagram for Coin Mechanism Model



# HD22 and HD30 Service Parts

## Wiring Diagram for Coin Mechanism Model after 2006 coin mech timer change



---

# Service Bulletin

---

## Subject: HD30 Coin Mech Timer Change

The timer used by the HD30 coin vending model to time out the vend has been changed. It was a two part timer, but now is a single piece.

The change began with units produced 12/15/2005.

The prior timer parts are obsolete and no longer available. The new timer can be used in place of the old one by switching the position of the two wires on terminals 1 and 2. Refer to the tables below.

The new timer is part number **12-2948-21**.

Wire Connections to Prior Timer	
Wire Color	Terminal Numbers
BK and R/W	1
BK	2
W/BU	3
O	6

Wire Connections to Current Timer	
Wire Color	Terminal Numbers
BK	1
BK and R/W	2
W/BU	3
O	6