

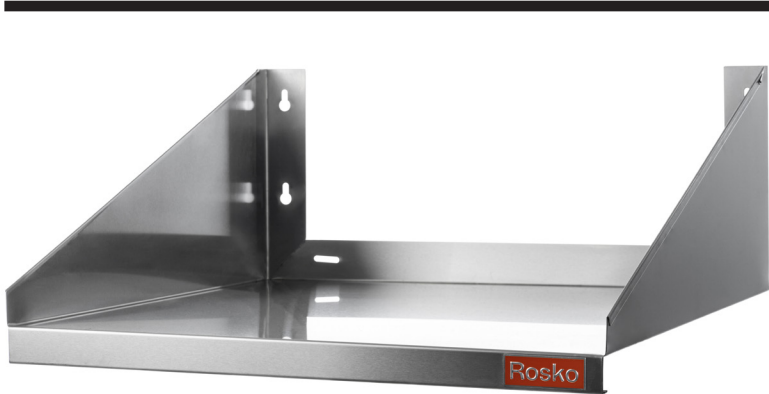
# Rosko

# RO-WMMS

## Wall Mount Microwave Shelf

□ RO-WMMS-1824

□ RO-WMMS-2424



RO-WMMS -2424

### Features

- Made of grade 304 stainless steel - 18 gauge
- Two (2) models available
- Easy installation and adjustment
- One (1) year limited warranty on parts and labor
- Certified to NSF/ANSI 2 standards



Model	Width	Depth	Number of supports	Height of supports	Weight	Packaging dimensions (W x D x H)
RO-WMMS-1824	18" - 457 mm	24" - 610 mm	2	10" - 254 mm	12 lb - 5,4 kg	20 x 25 x 11"
RO-WMMS-2424	24" - 610 mm					508 x 635 x 279 mm
						25 x 25 x 11"
					15 lb - 6,8 kg	635 x 635 x 279 mm