

# NPT-36SA-2D

## REFRIGERATED SALAD/SANDWICH PREP TABLE

Ideal for restaurants, cafeterias & food processing spaces

**NEW AIR**



### FEATURES

Stainless steel interior and exterior

Rear digital controller

Back mounted compressor

Clear plastic 1/6 pans included



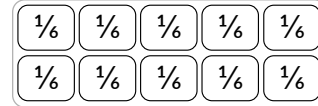
14.5" deep cutting board



# SPECIFICATIONS

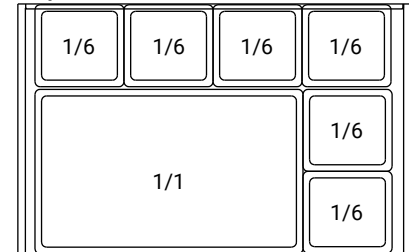
Capacity (Cu. ft)	8.98
Capacity (Liters)	254.3 L
Exterior Dimensions (in)	36" × 33 1/8" × 43 5/8"
Package Dimensions (in)	40 1/2" × 35 7/8" × 48 3/8"
Net Weight (kg/lbs)	97.5 kg / 215 lbs
Drawers	4
Temperature Range (°C)	0.5 TO 5°C
Ambiant Temperature	25°C
Ambiant Humidity	55%
Refrigerant (CFC-Free)	R290
Amperage (A)	2.4 A
Voltage (V)	115V / 60Hz
Plug Type	NEMA 5-15P

## Countertop storage

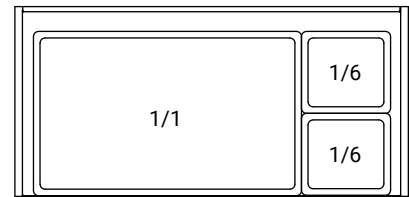


10 × 1/6 Pans

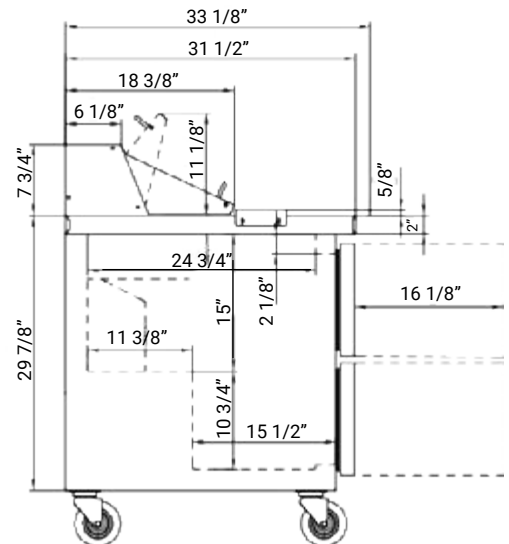
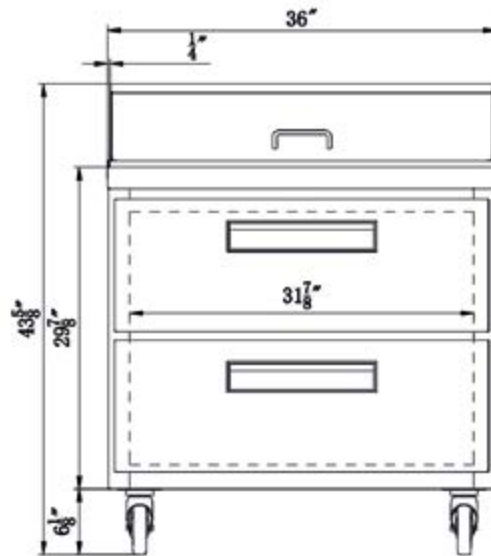
## Top Drawer



## Bottom Drawer



NEMA 5-15P



\*Design and specifications may change without prior notice for product improvement

CUSTOMER SUPPORT



1-800-567-3620



NEWAIRREFRIGERATION.CA

