

RV1
NIF-71-CG



**CURVED GLASS
ICE CREAM FREEZER**

Ideal for restaurants, convenience stores, supermarkets & cafeterias



FEATURES

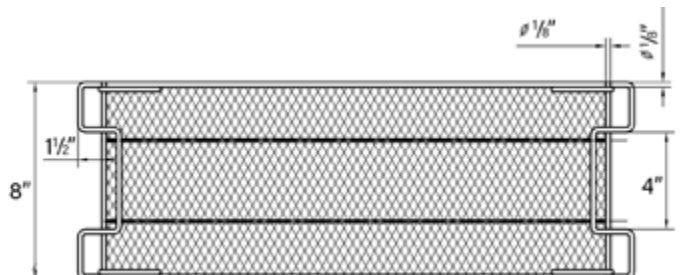
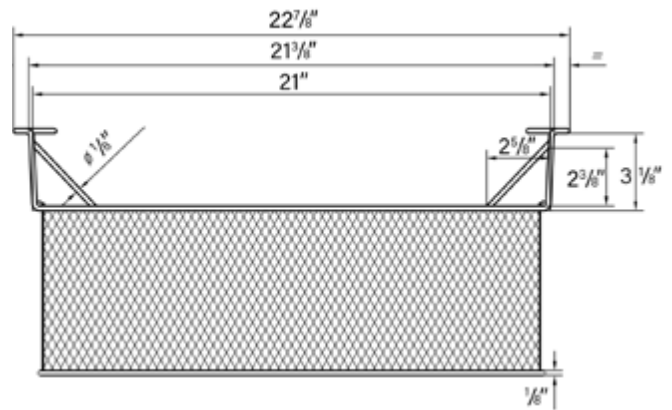
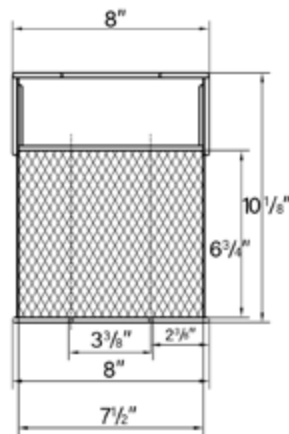
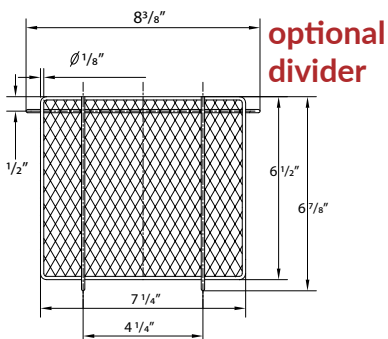
Side temperature display
& adjustable thermostat

Aluminum interior

Sliding curved glass door

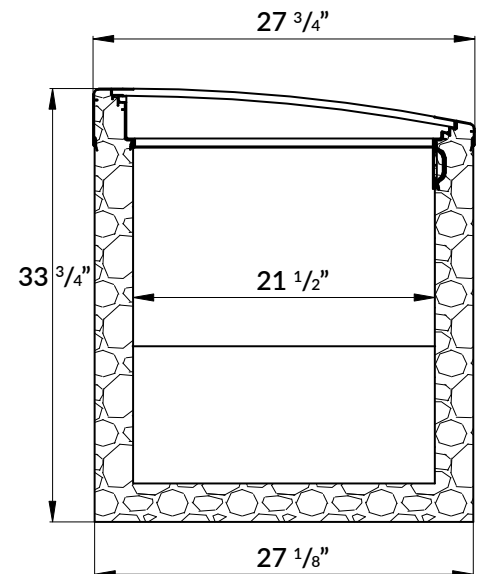
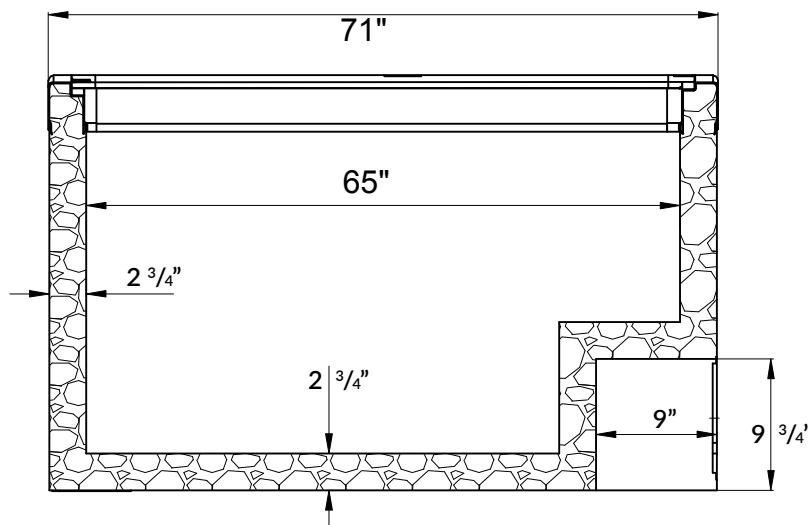
Four casters (2 swivel)

Wire baskets included



SPECIFICATIONS

| | |
|--------------------------|-------------------------|
| Capacity (Cu. ft) | 19.4 |
| Capacity (Liters) | 549 |
| Exterior Dimensions (in) | 71" × 27 3/4" × 32 3/4" |
| Interior Dimensions (in) | 65" × 21 1/2" × 25 1/2" |
| Net Weight (kg/lbs) | 72 / 158.7 |
| Nbr of wire baskets | 6 |
| Basket size | 23" × 8 1/2" × 12 3/4" |
| Door(s) | Sliding (top) |
| Temp. Range | -18 TO -22°C |
| Ambiant Temperature | ≤ 30°C |
| Ambiant Humidity | ≤ 55% |
| Refrigerant (CFC-Free) | R290 |
| Amperage (A) | 3.9A |
| Voltage (V) | 115V/60Hz |
| Plug Type | NEMA 5-15P |



*Design and specifications may change without prior notice for product improvement

CUSTOMER SUPPORT



1-800-567-3620



NEWAIRREFRIGERATION.CA

