

NIF-41-FG



FLAT GLASS ICE CREAM FREEZER

Ideal for restaurants, convenience stores, supermarkets & cafeterias



FEATURES

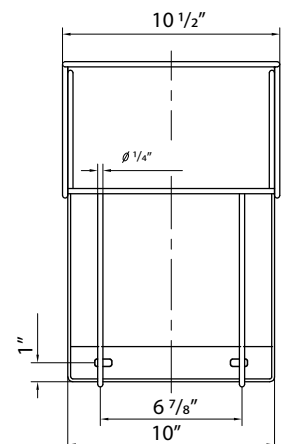
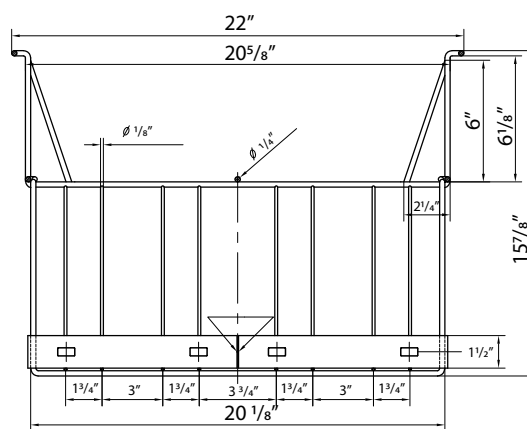
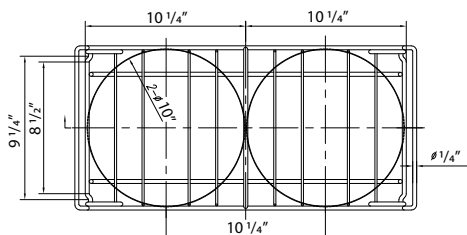
Front temperature display
& adjustable thermostat

Aluminum interior

Sliding flat glass doors

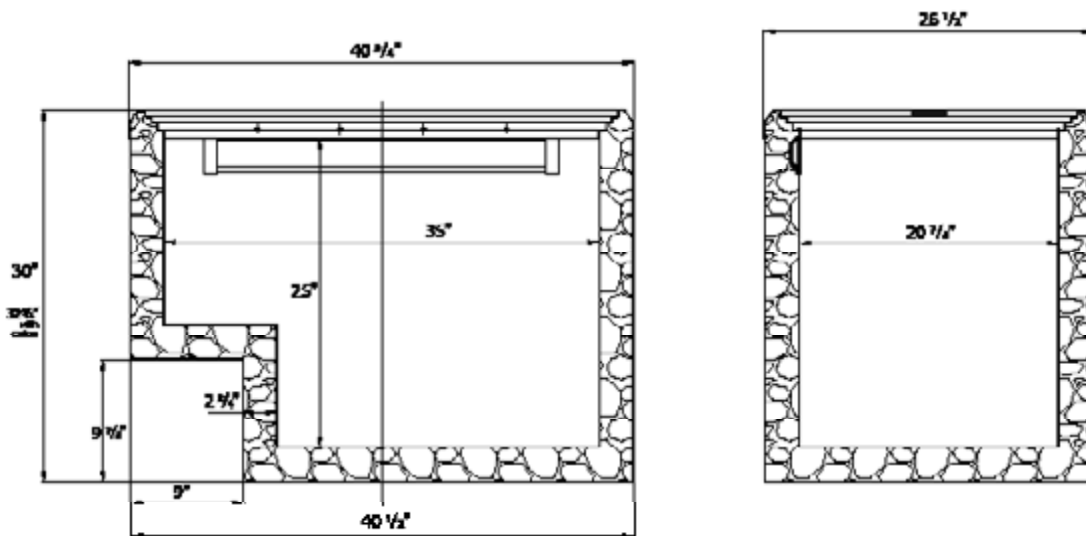
Four casters (2 swivel)

Wire ice cream tub baskets included



SPECIFICATIONS

Capacity (Cu. ft)	9.9
Capacity (Liters)	280L
Exterior Dimensions (in)	40 3/4" x 26 1/2" x 32 3/4"
Interior Dimensions (in)	35" x 22 7/8" x 25 1/2"
Nbr of wire baskets	3
Basket size	10 1/2" x 22" x 15 7/8"
Door(s)	Sliding (top)
Temp. Range	-18 TO -22°C
Ambiant Temperature	≤ 30°C
Ambiant Humidity	≤ 55%
Refrigerant (CFC-Free)	R290
Amperage (A)	2.3A
Voltage (V)	115V/60Hz
Plug Type	NEMA 5-15P



*Design and specifications may change without prior notice for product improvement

CUSTOMER SUPPORT



1-800-567-3620



NEWAIRREFRIGERATION.CA

