

NGR-21-62H

GLASS DOOR MERCHANDISER WITHOUT CANOPY

Ideal for convenience stores, front-of-house, grocery stores, restaurants and cafés

NEW AIR



FEATURES



NEMA 5-15P



Intertek

Built-in motor & slim door frame for maximum storage space & product display

Patented “i-light” for brighter, anti-glare interior lighting

Carel™ digital controller & LED display

Double-pane tempered low-e glass

Black interior & exterior

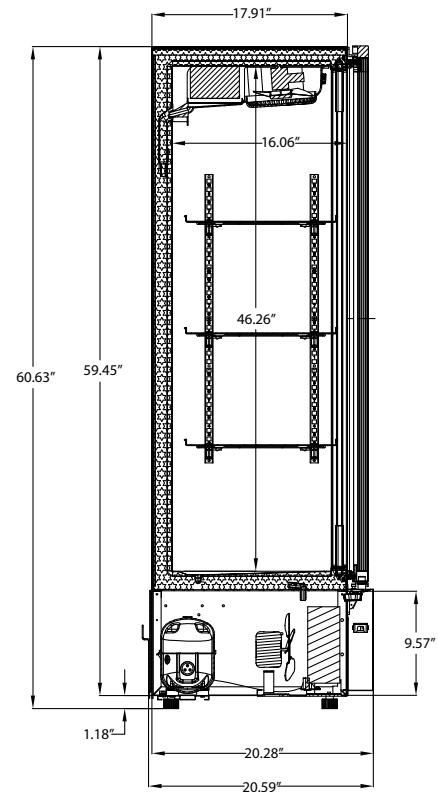
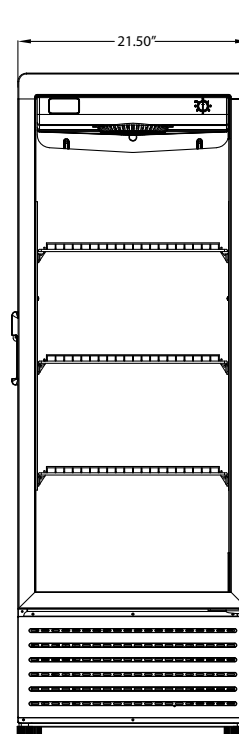
Casters & rear stoppers

Aluminum frame with stainless steel interior & base

Adjustable shelving

SPECIFICATIONS

Capacity (Cu. ft)	7.6
Capacity (Liters)	230 L
Exterior Dimensions (in)	21 1/2" x 17 7/8" x 60 5/8"
Interior Dimensions (in)	18" x 16 1/8" x 46 1/4"
Net Weight (kg/lbs)	50 / 110
Nbr of Shelves	3
Shelf Dimensions	18" x 16"
Nbr of Door(s)	1, Hinged
Temperature Range (°C)	0 TO 10°C
Ambiant Temperature	≤ 25°C
Ambiant Humidity	≤ 55%
Refrigerant (CFC-Free)	R290
Amperage (A)	2 A
Voltage (V)	110V / 60Hz
Plug Type	NEMA 5-15P



NEW AIR

*Design and specifications may change without prior notice for product improvement

CUSTOMER SUPPORT



1-800-567-3620



NEWAIRREFRIGERATION.CA



2025