

NGF-30-HB

GLASS DOOR FREEZER

WITHOUT CANOPY



Ideal for convenience stores, front-of-house, grocery stores, restaurants and cafés



FEATURES



NEMA 5-15P



Intertek

Built-in motor & slim door frame for maximum storage space & product display

Patented “i-light” for brighter, anti-glare interior lighting

Carel™ digital controller & LED display

Double-pane tempered low-e glass

Black interior & exterior

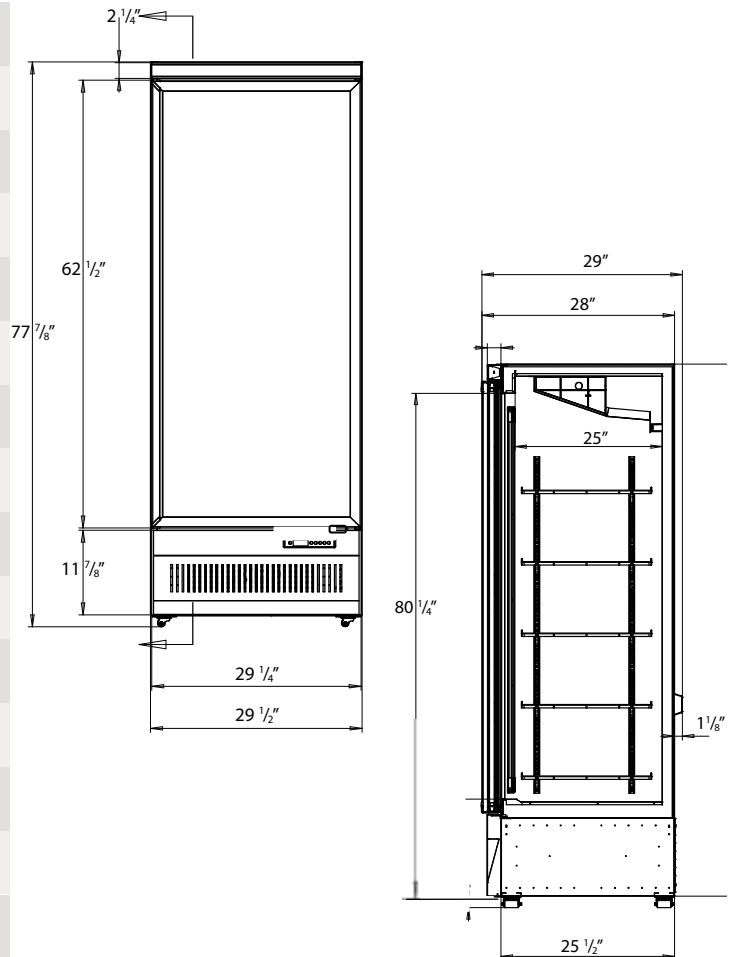
Casters & rear stoppers

Aluminum frame with stainless steel interior & base

Adjustable shelving

SPECIFICATIONS

Capacity (Cu. ft)	20
Capacity (Liters)	560 L
Exterior Dimensions (in)	29 1/2" x 29" x 77 7/8"
Interior Dimensions (in)	29" x 25" x 62 1/2"
Net Weight (kg/lbs)	130 / 286.6
Nbr of Shelves	5
Shelf Dimensions	29" x 25"
Nbr of Door(s)	1, Hinged
Temperature Range (°C)	-18 TO -22°C
Ambiant Temperature	≤ 32°C
Ambiant Humidity	≤ 55%
Refrigerant (CFC-Free)	R290
Amperage (A)	7 A
Voltage (V)	115V / 60Hz
Plug Type	NEMA 5-15P



*Design and specifications may change without prior notice for product improvement

CUSTOMER SUPPORT



1-800-567-3620



NEWAIRREFRIGERATION.CA

