

## Refrigeration Equipment 4-Drawer Mega Top Prep Table 61" Long 24-1/6 Pan

ITEM # \_\_\_\_\_

MODEL # \_\_\_\_\_

NAME # \_\_\_\_\_

SIS # \_\_\_\_\_

AIA # \_\_\_\_\_



738288 (KCHMT60.24.4D)

4-Drawer Mega Top Prep  
Table 61" Long 24-1/6 Pan

### Short Form Specification

**Item No.** \_\_\_\_\_

4-drawer mega top refrigerated preparation table. Exterior back panel and exterior bottom panel in galvanized steel, exterior side and top panel in 430 stainless steel; interior back, top and interior bottom panels in 304 stainless steel, worktop in 304 stainless steel. Built-in refrigeration unit and an insulated lid to maintain food freshness. Fin & Tube Condenser improves performance in high-temperature environments. Automatic Defrost Cooling System to provide worry-free performances. Full-depth cutting board of 61x9x0,5 in. Control panel, and removable drawer gaskets. Temperature range: +33/+41°F.

R290 gas in the refrigeration circuit.  
ETL Safety and Sanitation certifications.  
3/5 Years warranty.

### Main Features

- External temperature display.
- Removable gasket for easy cleaning operations.
- Fin & Tube Condenser improves performance in high temperature environments.
- Automatic Defrost Cooling System provides worry-free performance.
- Electronic Temperature Control, quick and simple to set, with control display for easy monitoring.
- Full Depth cutting board.
- Cabinet completely insulated with high density polyurethane for low environmental impact.
- Drawer slides support up to 152 lbs. static capacity.
- Removable rubber bumper guards for airflow spacing and shock absorption
- Back bottom mounted cooling unit guarantee an easy access and cleaning.
- Integrated polyethylene (PE) cutting board included for food-safe, durable prep surface

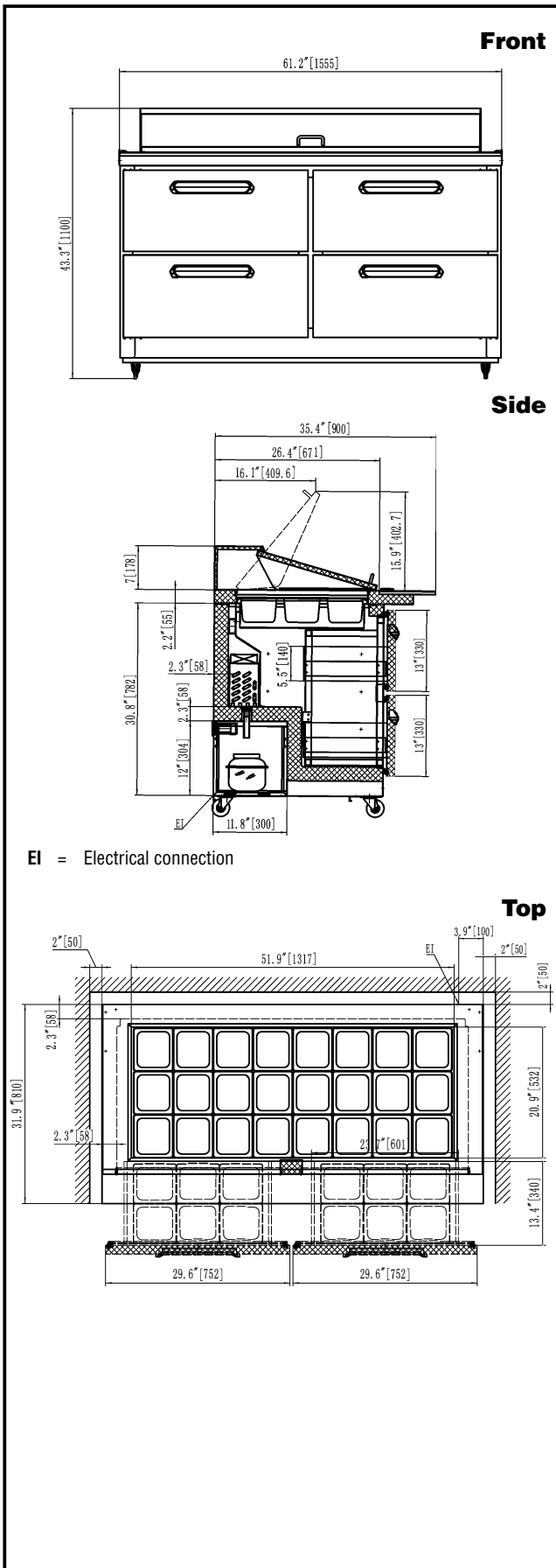
### Construction

- Stainless steel interior and exterior, durable and easy to clean for daily commercial use.
- White polystyrene interior side panels, for high impact resistance
- Holds 24 1/6 pans.
- Insulated lid maintains food freshness.
- Heavy duty casters.
- Pre-wired heavy duty power cord.
- Magnetic gasket removable without tools for easy cleaning.
- Heavy duty drawer runners.
- Stainless steel worktop, durable functionality

### Sustainability

- CFC and HCFC free, highly ecological refrigerant type: R290 (ecological gas in foam: cyclopentane). Hydrocarbon refrigerant gas R290 for the lowest environmental impact (GWP=3), to reduce green house and ozone depletion effects.
- Hydrocarbon refrigerant gas R290 for the lowest environmental impact (GWP=3) - CFC and HCFC free.
- High efficiency components to minimize the energy consumption still guaranteeing the highest performances.
- 58 mm insulation for energy saving

APPROVAL: \_\_\_\_\_



EI = Electrical connection

## Electric

|                        |                  |
|------------------------|------------------|
| Supply voltage:        | 115 V/1 ph/60 Hz |
| Electrical power, max: | 0.78 kW          |
| Plug type:             | USA NEMA 5-15P   |

## Capacity:

|                 |              |
|-----------------|--------------|
| Gross capacity: | 15.5 cu.feet |
|-----------------|--------------|

## Key Information:

|  |   |
|--|---|
| Number and type of pans (included):          | 24 - Plastic                                |
| Number and type of cutting board (included): | 1 - Polyethylene (PE)                       |
| Warranty:                                    | 3 / 5 years                                 |
| Capacity:                                    | 15.5 cu.ft.                                 |
| External dimensions, Width:                  | 61 1/4" (1555 mm)                           |
| External dimensions, Depth:                  | 35 7/16" (900 mm)                           |
| External dimensions, Height:                 | 43 5/16" (1100 mm)                          |
| Internal Dimensions (depth):                 | 23 13/16" / (605 mm)                        |
| Internal Dimensions (height):                | 23 1/2" / (597 mm)                          |
| Internal Dimensions (width):                 | 56 1/4" / (1429 mm)                         |
| Shipping height:                             | 47 1/4" (1200 mm)                           |
| Shipping weight:                             | 463 lbs (210 kg)                            |
| Shipping volume:                             | 61.5 ft <sup>3</sup> (1.74 m <sup>3</sup> ) |
| Type of external material:                   | Stainless Steel                             |
| Type of internal material:                   | Polystyrene                                 |
| Approvals                                    | ETL C&US;ETL SANITATION                     |
| N° of drawers:                               | 4   |

## Refrigeration Data

|                             |              |
|-----------------------------|--------------|
| Condenser type:             | Fin & tube   |
| Operating temperature min.: | 32 °F        |
| Compressor power:           | 1/3 hp       |
| Operating temperature max.: | 41 °F        |
| Defrost type:               | Auto Defrost |

## Sustainability

|                      |          |
|----------------------|----------|
| Current consumption: | 4.3 Amps |
| Refrigerant type:    | R290     |
| GWP Index:           | 3        |
| Refrigerant weight:  | 90 g     |

## Refrigeration Equipment 4-Drawer Mega Top Prep Table 61" Long 24-1/6 Pan

The company reserves the right to make modifications to the products without prior notice. All information correct at time of printing.

