



Project _____

Item _____ Quantity _____

Approved by _____ Date _____

AIA/SIS # _____



DA-3

Pot & Pan Washer



50
Racks Per Hour

Military-Grade Build Quality

Hold-Down Rack System

Made in the USA

SPECIFIER STATEMENT

Specified unit will be an Insinger DA-3 pot and pan washer. Features include T304 stainless steel construction, hold-down rack system, rollers for easy rack swapping, automatic fill, and capillary thermometers for wash and final rinse. Includes a 1-year parts and labor warranty.

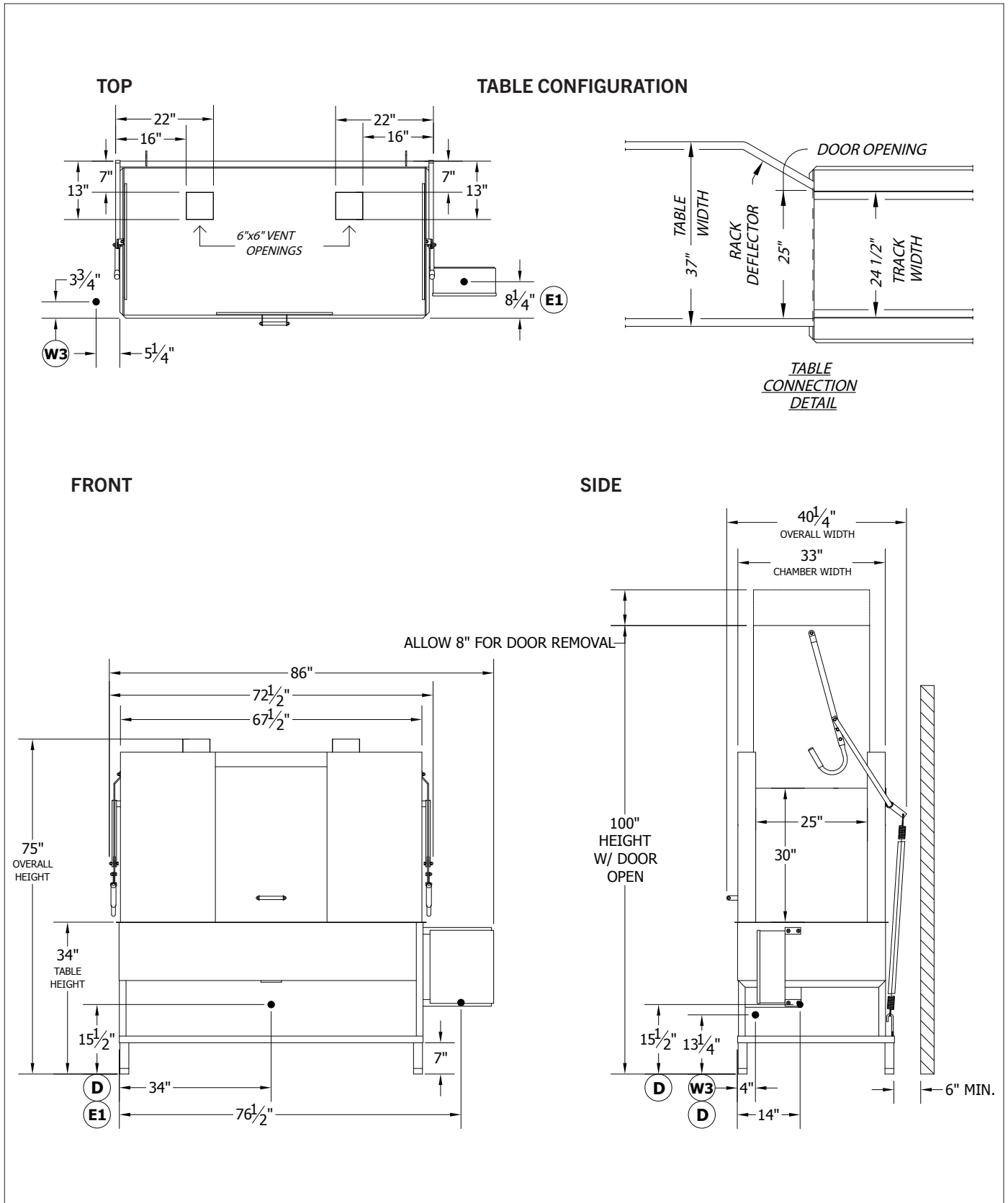
STANDARD FEATURES

- Washes 50 racks (24" x 28") per hour
- Built-in rollers allow racks to easily guide in and out
- Double the capacity of CA-3
- Efficient pass through design
- Hold-down rack system to secure ware
- T304 stainless steel construction
- Automatic tank fill
- Capillary thermometers for wash and final rinse
- Detergent connection provision
- Door safety switches
- Inspection door
- Interchangeable upper and lower spray arms
- Low water protection
- Manual bypass selector switch
- Manifold clean-out brush
- Rinse pressure regulation
- Racks: 2 general utility, 2 bake sheet, 1 basket
- Side-mounted control panel (NEMA 12)
- Simplified scrap screen design
- Stainless steel front panel
- Standard frame drip proof motor
- Two vent openings with adjustable dampers
- Vacuum breaker on all incoming water lines

OPTIONS & ACCESSORIES

- Drain cooldown system
- Electric boosters (Qty. 2) - remote
- Full-size sheet pan rack
- General utility rack
- Pressure reduction valve and line strainer
- Security package
- Stainless steel steam coil tank heat
- Steam boosters - built-in
- Telescoping doors
- Totally enclosed motor
- Wire mesh basket rack

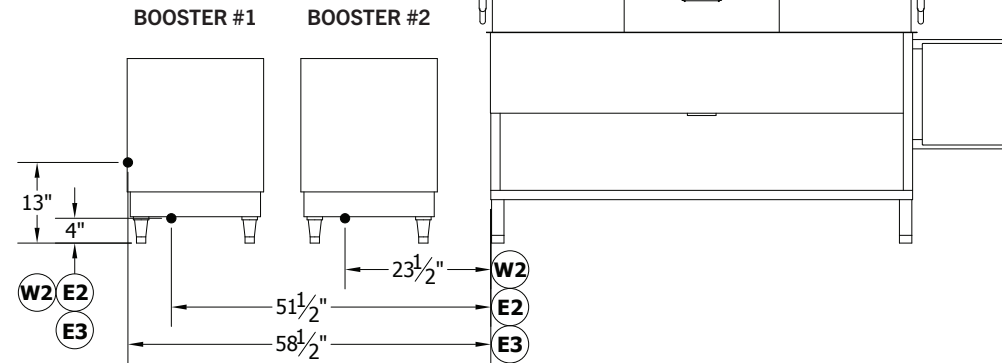
TECHNICAL INFORMATION



TECHNICAL INFORMATION

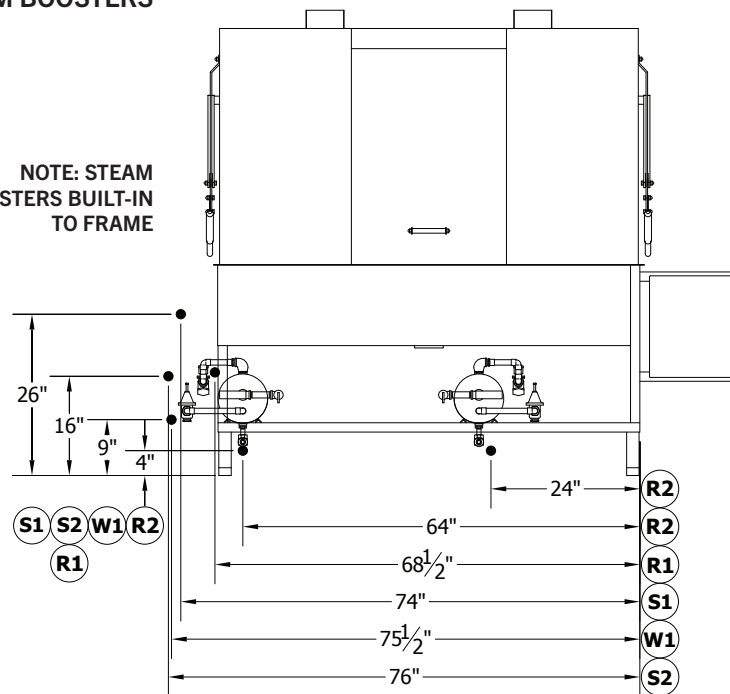
ELECTRIC BOOSTERS

NOTE: PLACE BOOSTERS BENEATH DISH TABLES



STEAM BOOSTERS

NOTE: STEAM BOOSTERS BUILT-IN TO FRAME



SPECIFICATIONS

Capacity	Racks Per Hour (24" x 28")	50
	Sheet Pans Per Hour	300
Heating & Venting	Wash Tank Heat	5 kW
	Booster Heat (40°F Rise)	9 kW (QTY. 2)
	Booster Heat (70°F Rise)	24 kW (QTY. 2)
	Venting	600 CFM
	Water Inlet Temperature	110°F
Water	Water Consumption (20 PSI)	140 gal/hr
	Wash Tank Capacity	62 gal
	Peak Drain Flow	16 gal/min
	Steam Tank Consumption (20 PSI)	20 lbs/hr
Steam	Steam Consumption (20 PSI, 40°F Rise)	50 lbs/hr
	Steam Consumption (20 PSI, 70°F Rise)	88 lbs/hr
	Wash Motors	10 (QTY. 2, 5 HP)
Other	Shipping Weight	1,500

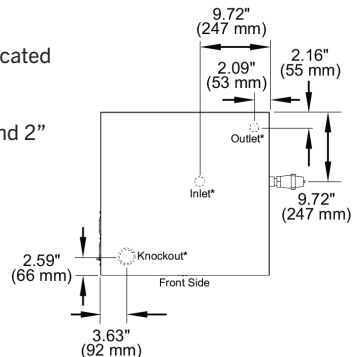
RECOMMENDED CIRCUIT SIZE

	DA-3 (Electric)	Booster #1 (24 kW)	Booster #2 (24 kW)
208/60/3	60 A	90 A	90 A
240/60/3	60 A	75 A	75 A
480/60/3	30 A	40 A	40 A

BOOSTER TOP VIEW

Knockouts, outlet, and inlet located on bottom of boosters (qty. 2)

Electrical knockouts at 1.5" and 2"



ELECTRICAL

	Service Options	DA-3 (Electric)	Booster (9 kW, QTY. 2)	Booster (24 kW, QTY. 2)
Electric Tank Heat	208/60/3	48.0 A	76 A	135.4 A
	240/60/3	43.1 A	66 A	115.6 A
	380/50/3	26.4 A	Contact Factory	
	480/60/3	21.5 A	32.6 A	59.8 A
	Service Options	DA-3 (Steam)		
Steam Tank Heat	208/60/3	34.1 A		
	240/60/3	31.1 A		
	380/50/3	18.8 A		
	480/60/3	15.5 A		

LEGEND

Type	Label	Description	Note
Water	W1	HOT WATER TO FINAL RINSE - 180F	1" FIPS
	W2	HOT WATER TO STEAM BOOSTER - 140F	1" FIPS
	W3	HOT WATER TO ELECTRIC BOOSTER - 140F	1" FIPS
Electrical	D	DRAIN CONNECTION	1.5" FIPS
	E1	ELECTRICAL CONNECTION - MOTORS	5 HP
	E2	ELECTRICAL CONNECTION - BOOSTER	9 OR 24 kW
Steam	E3	ELECTRICAL CONNECTION - BOOSTER	9 OR 24 kW
	S1	STEAM TO TANK	3/4" FIPS
Other	S2	STEAM TO BOOSTER	1.25" FIPS
	R1	CONDENSATE RETURN - COIL ONLY	1/2" FIPS
	R2	CONDENSATE RETURN - BOOSTER	1/2" FIPS

Contact Insinger Sales at 800-344-4802 for an installation drawing specific to your application.
 Note: Due to product improvement we reserve the right to change information and specifications without notice.