



Project \_\_\_\_\_

Item \_\_\_\_\_ Quantity \_\_\_\_\_

Approved by \_\_\_\_\_ Date \_\_\_\_\_

AIA/SIS # \_\_\_\_\_



# CA-3

Pot & Pan Washer



**25**  
Racks Per Hour

Military-Grade Build Quality

Hold-Down Rack System

Made in the USA

## STANDARD FEATURES

- Washes 25 racks (24" x 28") racks per hour
- Built-in rollers allow racks to easily guide in and out
- Efficient pass-through design
- Hold-down rack system
- ScrapShield oversized scrap screens
- T304 stainless steel construction
- Automatic tank fill
- Capillary thermometers for wash and final rinse
- Detergent connection provisions
- Door safety switches
- Front inspection door
- Interchangeable upper and lower spray arms
- Low water protection
- Manual bypass selector switch (auto/manual wash)
- Manifold clean-out brush
- One (1) year parts & labor warranty
- Rack set: 1 general utility, 1 bake sheet, 1 basket
- Side-mounted control panel (NEMA 12)
- Stainless steel front cosmetic panel
- Standard frame drip-proof motor
- Vacuum breaker on all incoming water lines

## OPTIONS & ACCESSORIES

- Corner configuration (CA-3C)
- Drain cooldown
- Electric booster
- Full-size sheet pan rack
- General utility rack
- Pressure regulating valve and line strainer
- Security package
- Stainless steel steam coil tank heat
- Steam booster
- Telescoping doors
- Totally enclosed motor
- Wire mesh basket rack

## SPECIFIER STATEMENT

Specified unit will be a CA-3 pot and pan washer. Features include built-in rollers, hold-down rack system, ScrapShield oversized scrap screens, and T304 stainless steel construction. Includes a one (1) year parts & labor warranty.

# TECHNICAL INFORMATION

TOP

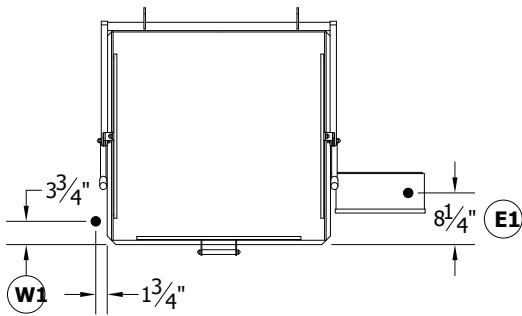
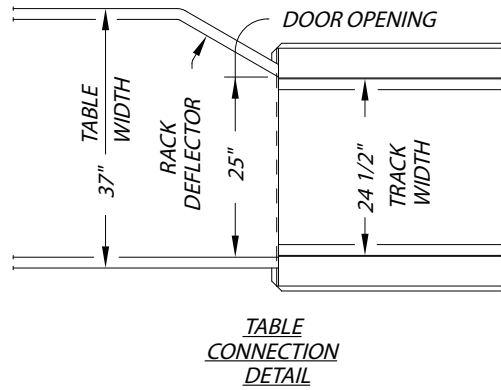
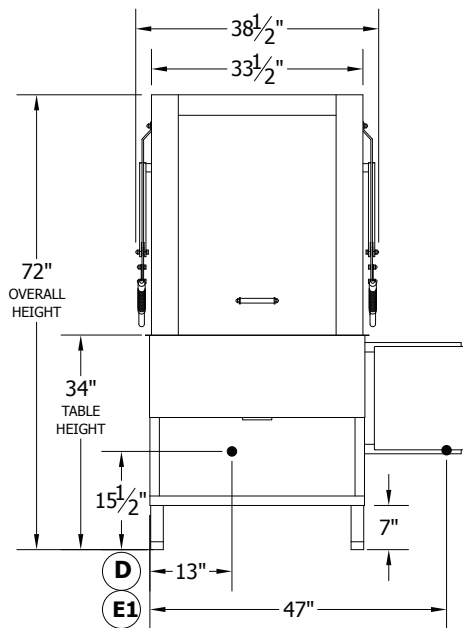


TABLE CONFIGURATION

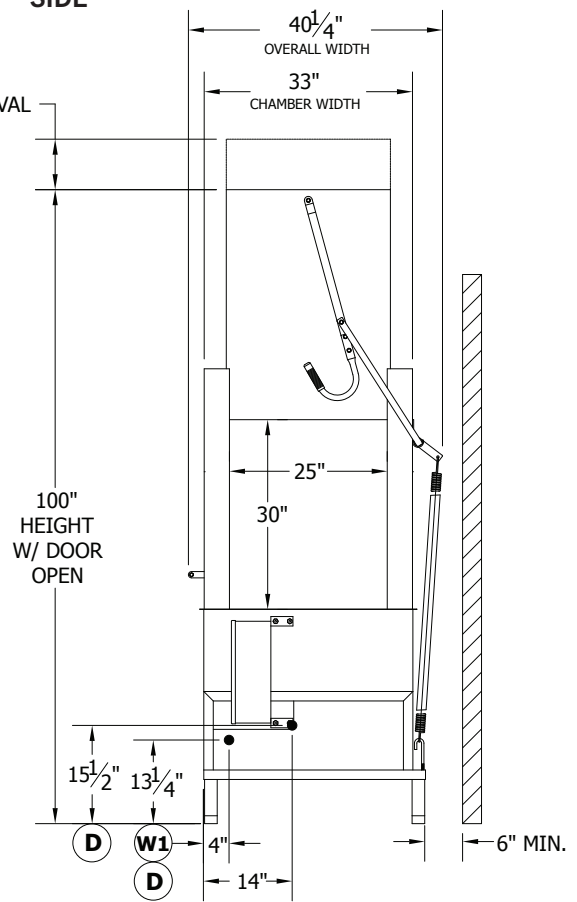


FRONT



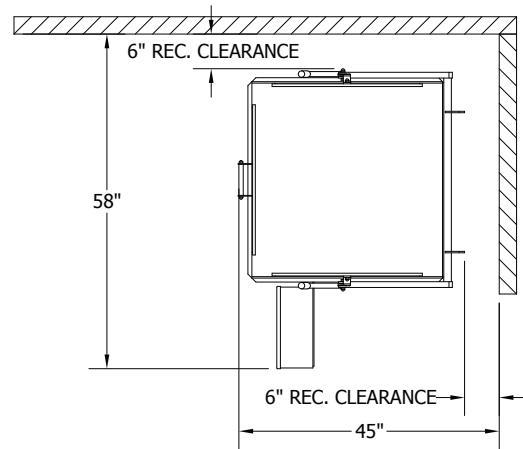
SIDE

ALLOW 8" FOR DOOR REMOVAL

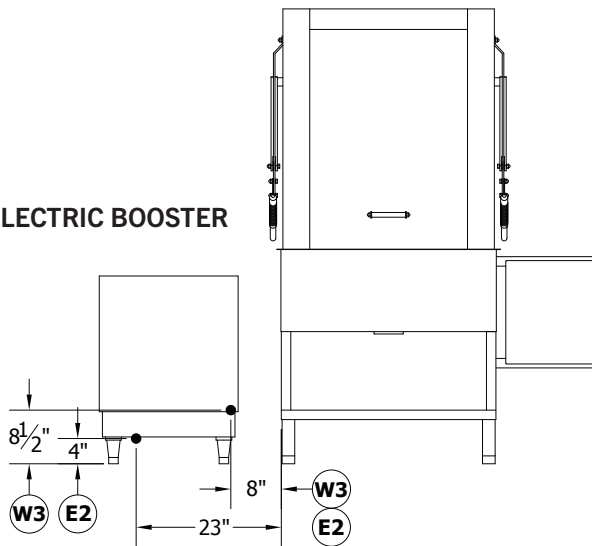


# TECHNICAL INFORMATION

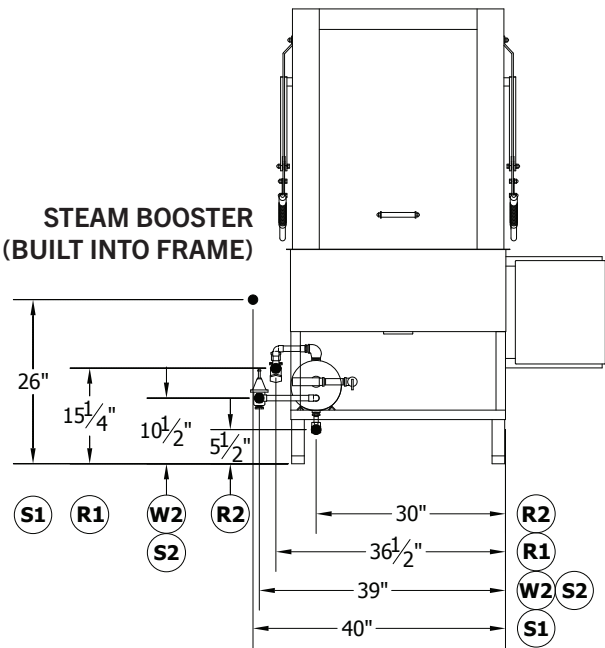
## CORNER CONFIGURATION



## ELECTRIC BOOSTER



## STEAM BOOSTER (BUILT INTO FRAME)



## SPECIFICATIONS

Capacity	Racks Per Hour (24" x 28")	25
	Sheet Pans Per Hour	150
Heating & Venting	Wash Tank Heat	5 kW
	Booster Heat (40°F Rise)	9 kW
	Booster Heat (70°F Rise)	24 kW
	Venting	300 CFM
	Water Inlet Temperature	110°F
Water	Water Consumption (20 PSI)	70 gal/hr
	Wash Tank Capacity	31 gal
	Peak Drain Flow	9 gal/min
	Steam Tank Consumption (20 PSI)	20 lbs/hr
Steam	Steam Consumption (20 PSI, 40°F Rise)	25 lbs/hr
	Steam Consumption (20 PSI, 70°F Rise)	44 lbs/hr
	Wash Motor	5 HP
Other	Shipping Weight	800

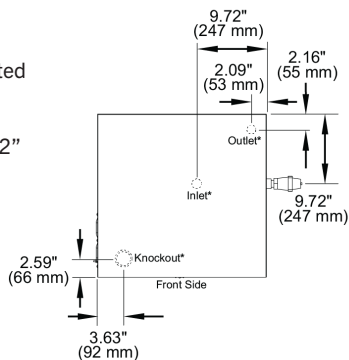
## RECOMMENDED CIRCUIT SIZE

	CA-3 (Electric)	9 kW Booster	24 kW Booster
208/60/3	40 A	50 A	90 A
240/60/3	40 A	50 A	75 A
480/60/3	20 A	20 A	40 A

### BOOSTER TOP VIEW

Knockouts, outlet, and inlet located on bottom of booster

Electrical knockouts at 1.5" and 2"



## ELECTRICAL

	Service Options	CA-3 (Electric)	9 kW Booster	24 kW Booster
Electric Tank Heat	208/60/3	31.3 A	38 A	67.7 A
	240/60/3	27.9 A	33 A	57.8 A
	380/50/3	17.2 A	Contact Factory	
	480/60/3	13.9 A	16.3 A	29.9 A
	Service Options	CA-3 (Steam)		
Steam Tank Heat	208/60/3	17.4 A		
	240/60/3	15.9 A		
	380/50/3	9.6 A		
	480/60/3	7.9 A		

## LEGEND

	Label	Description	Note
Water	W1	HOT WATER TO FINAL RINSE - 180F	1" FIPS
	W2	HOT WATER TO STEAM BOOSTER - 140F	1" FIPS
	W3	HOT WATER TO ELEC. BOOSTER - 140F	1" FIPS
	D	DRAIN CONNECTION	1.5 INCA
Electrical	E1	ELECTRICAL CONNECTION - MOTORS	5 HP
	E2	ELECTRICAL CONNECTION - BOOSTER	9 OR 24 kW
Steam	S1	STEAM TO TANK	3/4" FIPS
	S2	STEAM TO BOOSTER	1.25" FIPS
Other	R1	CONDENSATE RETURN - COIL ONLY	1/2" FIPS
	R2	CONDENSATE RETURN - BOOSTER	1/2" FIPS

Contact Insinger Sales at 800-344-4802 for an installation drawing specific to your application.

Note: Due to product improvement we reserve the right to change information and specifications without notice.