



Project \_\_\_\_\_

Item \_\_\_\_\_ Quantity \_\_\_\_\_

Approved by \_\_\_\_\_ Date \_\_\_\_\_

AIA/SIS # \_\_\_\_\_



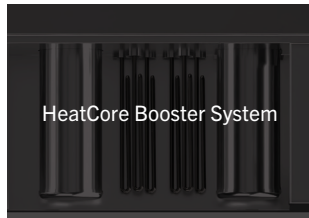
# ADMIRAL 66

Single Tank Rack Conveyor Dishwasher with Pre-Wash



# 233

Racks Per Hour



HeatCore Booster System



CrossFire™ Wash System



ENERGY STAR® 3.0 Certified

## SPECIFIER STATEMENT

Specified unit will be an Admiral 66 single tank rack conveyor dishwasher with recirculating pre-wash and wash systems with fresh water final rinse. Features include CrossFire wash system, dual built-in HeatCore boosters, Energy Star 3.0 certification, InfoPanel multi-line display, RackAware rack detection, StatusGlow LED Indicator Bar and ScrapShield oversized scrap screens. Includes a one (1) year parts & labor warranty.

## STANDARD FEATURES

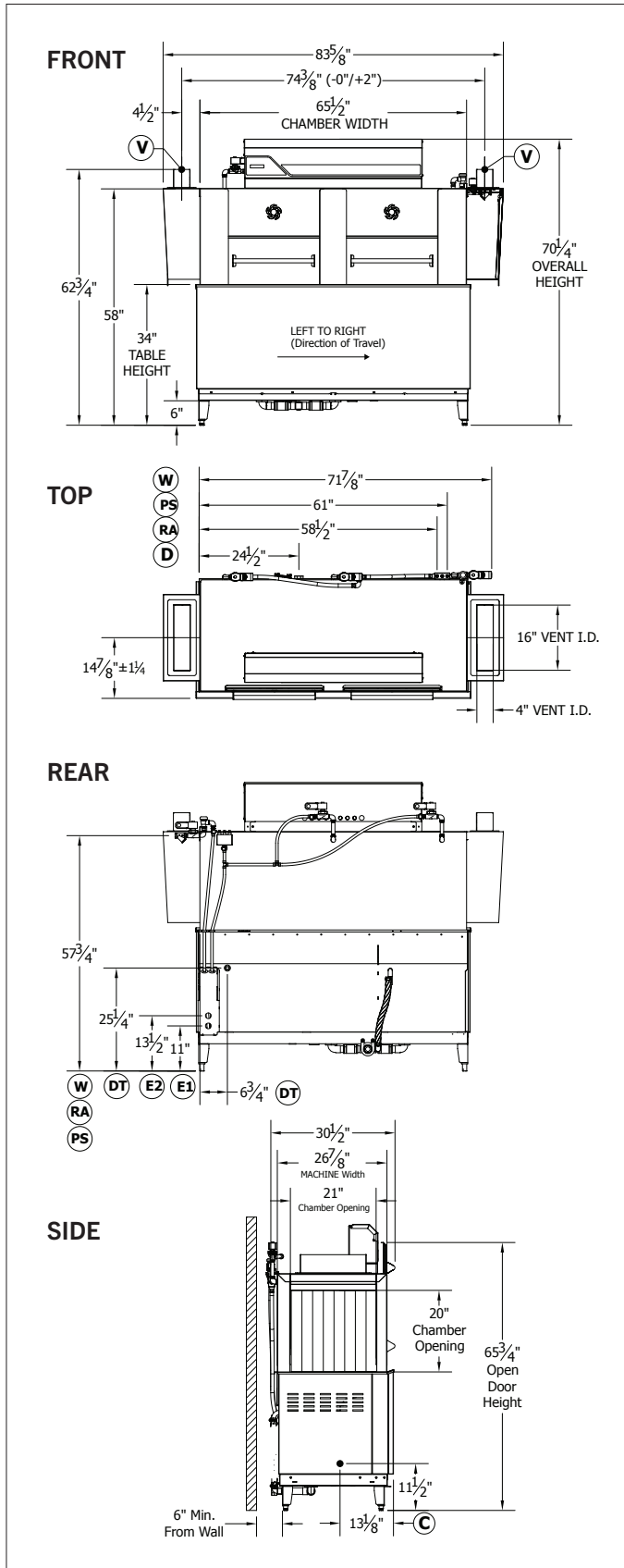
- Washes 233 racks (20" x 20") per hour
- ColorCorrect dish curtains
- CrossFire™ wash system
- Dual built-in HeatCore boosters
- ENERGY STAR® 3.0 certified
- InfoPanel multi-line display
- RackAware rack detection system
- ScrapShield oversized scrap screens
- StatusGlow LED indicator bar
- Automatic tank fill
- Detergent connection provision
- Door safety switches
- Dual point connection (Single point optional)
- Elevated top mounted control panel
- End caps/pipe plugs secured to prevent loss
- Left or right hand configuration
- Low water protection
- Manifold clean-out brush
- Override switch for de-liming
- Standard frame drip proof motors
- T304 stainless steel construction
- Ventilation fan connection provision
- VFD controlled continuous drive conveyor
- Wash tank heat recovery system

## OPTIONS & ACCESSORIES

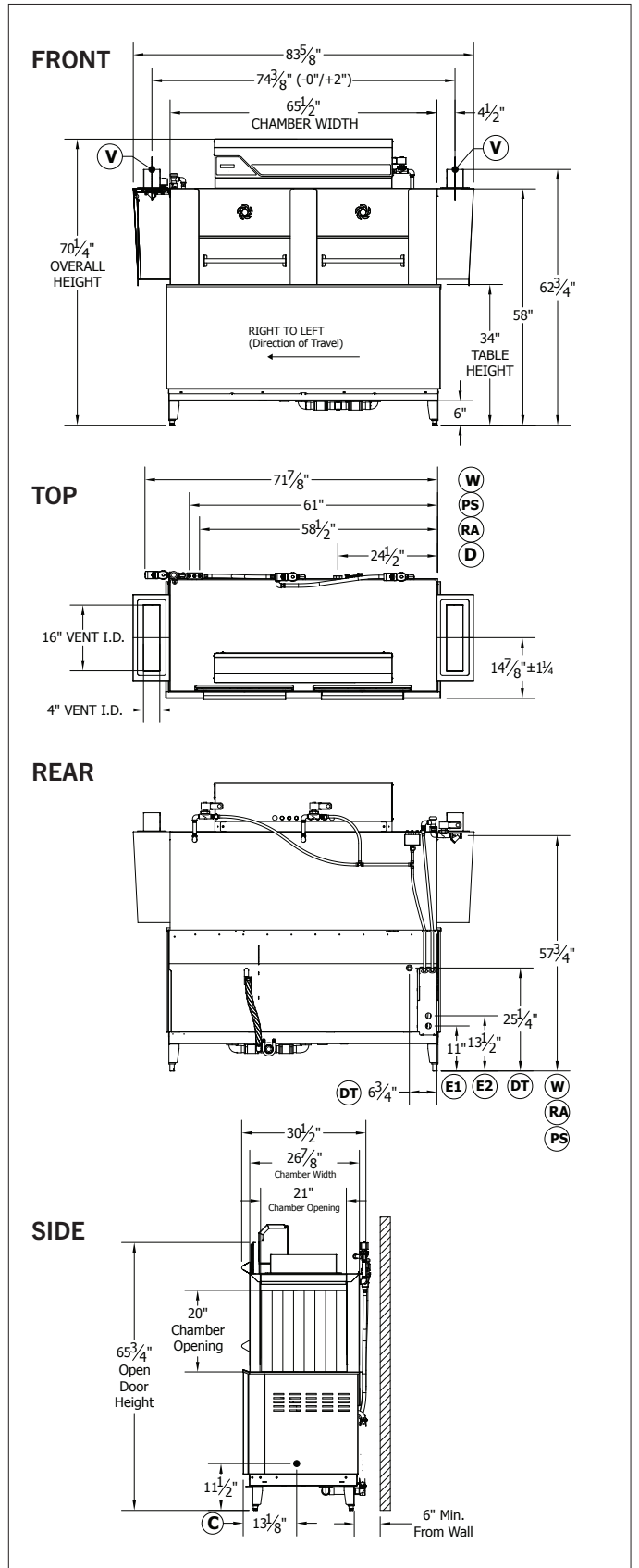
- 20" x 20" dish racks (peg or flat)
- Adjustable vent collars with damper controls
- Drain cooldown
- Left hand feed
- Power loader
- Power unloader
- Pressure reduction valve and wye strainer
- Rack limit switch
- Right hand feed
- Security package
- Single point connection (480V only)
- Vent cowl collar with adjustable damper controls

# TECHNICAL INFORMATION

## LEFT TO RIGHT



## RIGHT TO LEFT



## SPECIFICATIONS

|                              |                            |              |
|------------------------------|----------------------------|--------------|
| <b>Capacity</b>              | Racks Per Hour             | 233          |
|                              | Dishes Per Hour            | 5,225        |
|                              | Meals Per Hour             | 200-400      |
| <b>Heating &amp; Venting</b> | Tank Heat                  | 18 kW        |
|                              | Booster Heat               | 29.4 kW      |
|                              | Venting (Load End)         | 350 CFM      |
|                              | Venting (Unload End)       | 350 CFM      |
| <b>Water</b>                 | Water Inlet Temperature    | 110°F        |
|                              | Water Consumption (20 PSI) | .63 gal/rack |
|                              | Wash Tank Capacity         | 33.75 gal    |
|                              | Peak Drain Flow            | 9.0 gal/min  |
| <b>Other</b>                 | Drive Motor HP             | 1/15         |
|                              | Wash Motor HP              | 2.0          |
|                              | Built-In Boosters (2)      | Standard     |
|                              | Shipping Weight            | 750          |

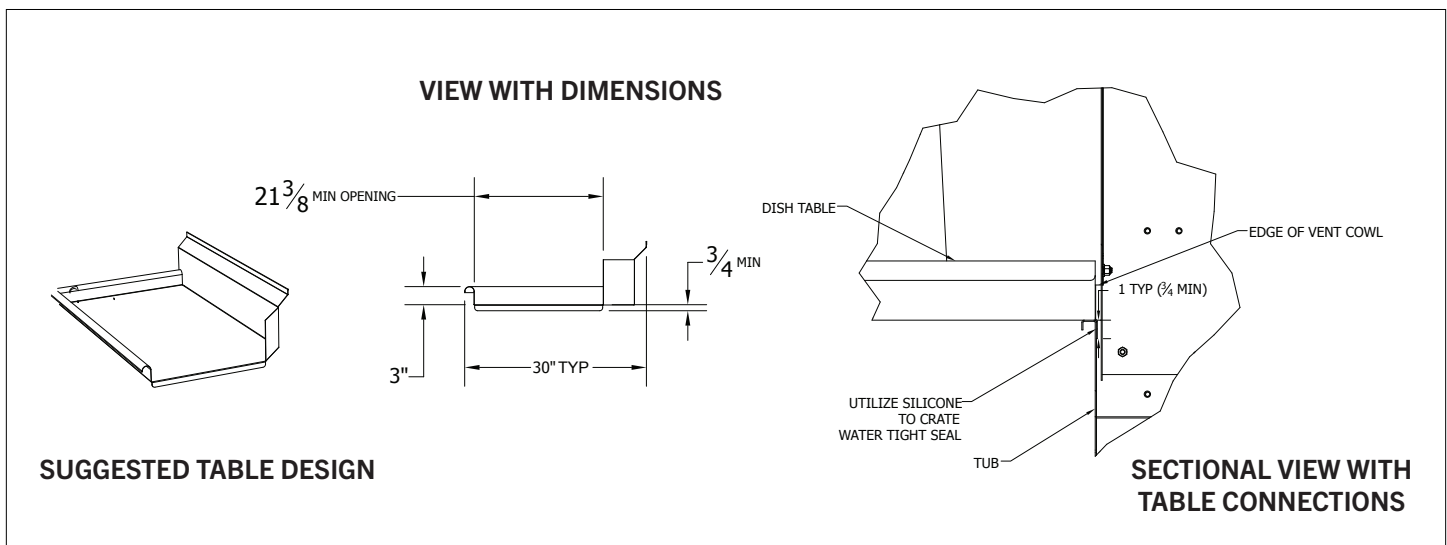
## ELECTRICAL

|  | Service Options | E1         | E2     |
|--|-----------------|------------|--------|
| <b>Electric Tank Heat (Dual Point)</b>   | 208/60/3        | 56.5 A     | 81.6 A |
|  | 240/60/3        | 49.8 A     | 70.7 A |
|  | 480/60/3        | 25.0 A     | 35.4 A |
|  | Service Options | Total Load |        |
| <b>Electric Tank Heat (Single Point)</b> | 480/60/3        | 61.5 A     |        |

## LEGEND

| Type              | Label | Description                        | Note       |
|-------------------|-------|------------------------------------|------------|
| <b>Water</b>      | D     | Drain Connection                   | 1-1/2 FPT  |
|                   | W     | Hot Water Inlet (110 F Min)        | 1/2 FPT    |
| <b>Electrical</b> | E1    | Main Electrical (Single & 2-Point) | 1-3/8 HOLE |
|                   | E2    | Booster Electrical (2 Pt Only)     | 1-3/8 HOLE |
|                   | C     | Conductivity Probe Location        | 7/8 HOLE   |
|                   | DT    | Detergent Insertion Points         | 7/8 HOLE   |
| <b>Chemical</b>   | PS    | Pressure Switch Connection         | 1/4 FPT    |
|                   | RA    | Rinse Aid Connection               | 1/4 FPT    |
| <b>Other</b>      | V     | Vent Collar & Dampers (Optional)   | 4" X 16"   |

## TABLE CONFIGURATION



Contact Insinger Sales at 800-344-4802 for an installation drawing specific to your application.  
 Note: Due to product improvement we reserve the right to change information and specifications without notice.