

MODEL: IDC-VCB12H  
 IDC-VCB18H / IDC-VCB24H

**Gelato display cases**

**GENERAL FEATURES**



**IDC-VCB18H**

- ✓ **Main features.** Straight glass gelato display cabinet plug in ECO R290. Refrigeration design for freezing with two completely independent circuits with individual control of the final defrost temperature. Prepared for continuous assembly with hidden sides (lines). Concealed rear glass structure. Hinged, tempered and heated front glass. Tempered glass top worktop. Worktop in white Quartz Compac. Panoramic sides with double tempered glass. Side decoration in epoxy painted sheet steel. AISI304 stainless steel tray support with gloss finish. Anodised aluminium plinth. High-pressure injected polyurethane insulation, CFC-free, with a density of 2.50 lb/ft<sup>3</sup>. Front and side decoration in high resistance lacquered MDF. Double 6000K cold white LED lighting with high efficiency in display and worktop. Electronic fans. Electronic control. Casters for installation and legs for fixing.
- ✓ **Higher energy efficiency.** R290 refrigerant with electric fans, LED lighting and evaporative tray without electric resistances.
- ✓ **Control System.** Our temperature management system offers unparalleled precision, allowing for highly accurate temperature settings. With greater flexibility in adjusting temperature ranges, our system can be tailored to meet the unique needs of each end user. This ensures optimal performance and maximum satisfaction with every use.
- ✓ **Lighting.** LED lighting in the canopy and cabinet sides reduces the energy consumption by 80% to 90% compared to a traditional bulb, better light quality.
- ✓ **100% Tested.** All condenser units are 100% tested, in helium chambers for refrigerant leak detections.
- ✓ **Certified.** Audited and Certified by INTERTEK for compliance with UL 471 and NSF 7.



**MODEL: IDC-VCB12H**  
**IDC-VCB18H / IDC-VCB24H**

*Gelato display cases*

**STANDARD FEATURES**

➤ **Exterior**

- Plastified galvanized steel.

➤ **Interior**

- AISI 304 Stainless Steel, exhibition plan.
- LED lighting.

➤ **Doors**

- Rear sliding doors.

➤ **Insulation**

- CFC – Free polyurethane insulation, entire cabinet structure is foamed-in using a high- density polyurethane insulation.
- Low GWP & Zero ODP effect.

**OPTIONAL FEATURES**

- Tray combinations.
- Optional colors as indicated in the catalog

➤ **Refrigeration**

- Temperature regulated by digital control.
- Stainless Steel evaporative pan.
- Evaporator coil coated with anti-corrosion material 100% polyester.
- Refrigeration capacity:  
 IDC-VCB12H – 3,449.67 Btu/h (14°F) / **1.011 W (-10°C)**.  
 IDC-VCB18H – 4,456.25 Btu/h (14°F) / **1.306 W (-10°C)**.  
 IDC-VCB24H – 4,456.25 Btu/h (14°F) / **1.306 W (-10°C)**.

➤ **Electrical**

- Cord and NEMA 6-20P plug.
- Electrical connection is 220V/ 1ph / 60 Hz.



➤ **ETL Listen to UL471 Standard and Sanitation classified to NSF7.**

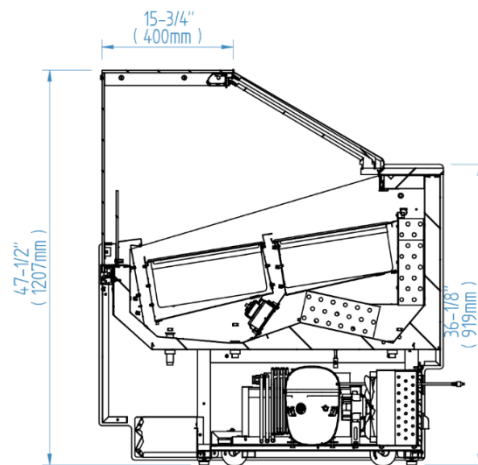
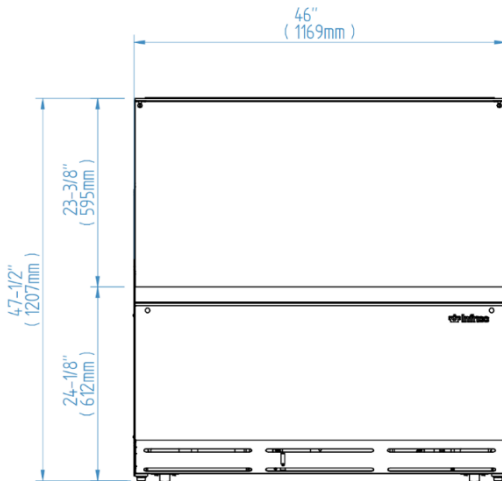
**MODEL: IDC-VCB12H**  
**IDC-VCB18H / IDC-VCB24H**

*Gelato display cases*

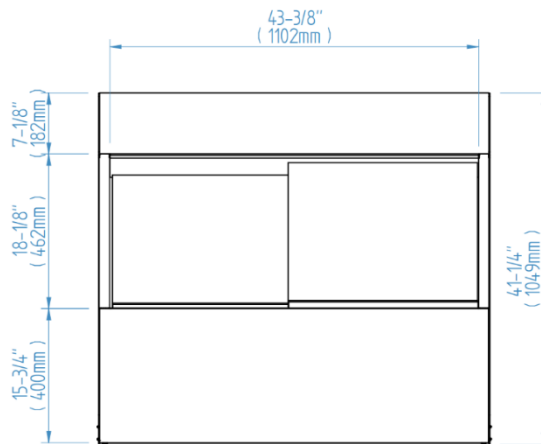
MODELS	Dimensions (inches) (mm)			Doors	Ref.	Ref.Weight (Lbs.) (gr.)	Temperature Range (°F) (°C)	Cond. Unit (H.P)	Capacity (Cu.Ft) (L)	Case Amps 115V	Net weight (Lbs.) (Kg.)
	W	D	H								
IDC-VCB12H	46 (1.169)	41-1/4 (1.049)	47-1/2 (1.207)	2	R290	0.617 (280)	5 °F / -0.40°F (-15°C/-18°C)	1-1/4	6.42 (182)	10.14	418.88 (190)
IDC-VCB18H	66-1/8 (1.681)	41-1/4 (1.049)	47-1/2 (1.207)	2	R290	0.31 + 0.26 (140+120)	5 °F / -0.40°F (-15°C/-18°C)	1+1/2	8.05 (228)	14.31	573.20 (260)
IDC-VCB24H	86-1/4 (2.189)	41-1/4 (1.049)	47-1/2 (1.207)	2	R290	0.33+ 0.26 (150+120)	5 °F / -0.40°F (-15°C/-18°C)	1-1/4+3/4	9.67 (274)	14.35	617.29 (280)

**ELEVATION**

**RIGHT VIEW**



**PLAN VIEW**



**IDC-VCB12H**

Rew: 01 Date: 10/02/2025 IDC-VCB12H\_VCB\_1H8\_VCB24H

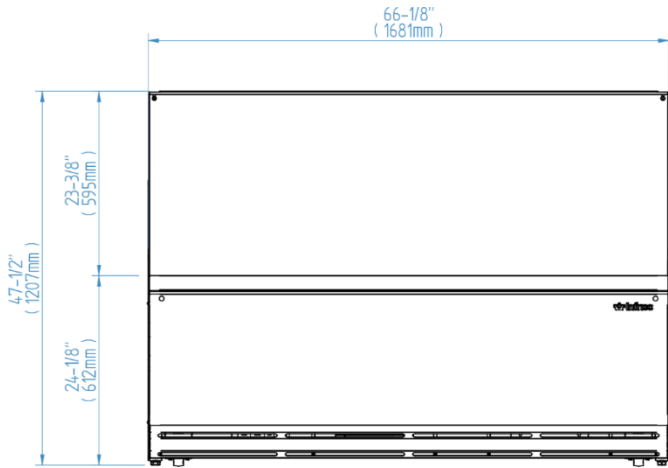
ETL LISTED TO UL471 STANDARD AND SANITATION CLASSIFIED TO NSF7 – WE RESERVE THE RIGHT TO CHANGE SPECIFICATIONS WITHOUT PRIOR NOTICE

Project: \_\_\_\_\_  
 Location: \_\_\_\_\_  
 Item #: \_\_\_\_\_ Quantity: \_\_\_\_\_  
 Model #: \_\_\_\_\_

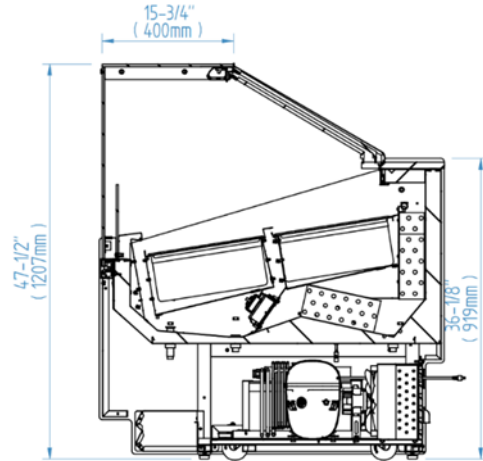
**MODEL: IDC-VCB12H**  
**IDC-VCB18H / IDC-VCB24H**

*Gelato display cases*

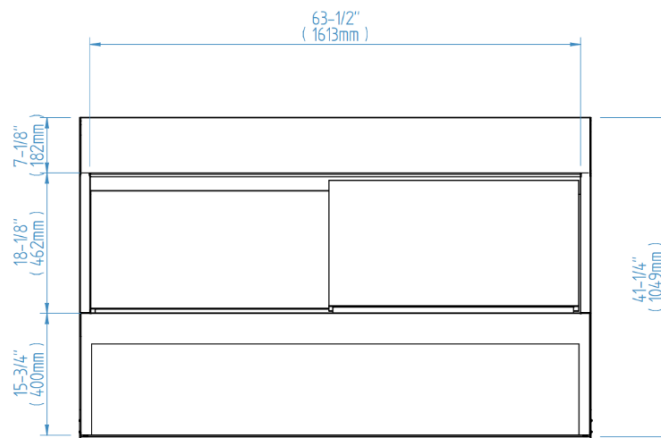
**ELEVATION**



**RIGHT VIEW**



**PLAN VIEW**



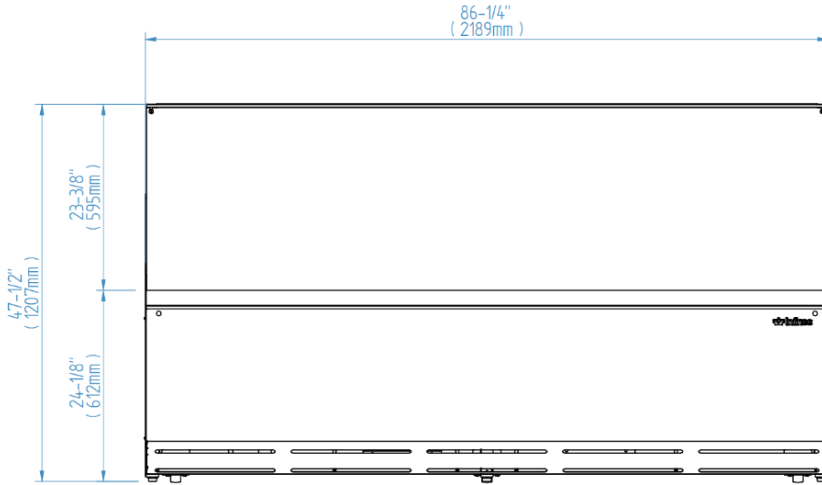
**IDC-VCB18H**

ETL LISTED TO UL471 STANDARD AND SANITATION CLASSIFIED TO NSF7 – WE RESERVE THE RIGHT TO CHANGE SPECIFICATIONS WITHOUT PRIOR NOTICE

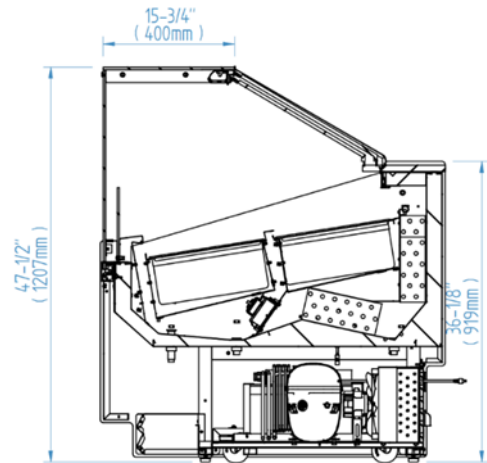
**MODEL: IDC-VCB12H**  
**IDC-VCB18H / IDC-VCB24H**

*Gelato display cases*

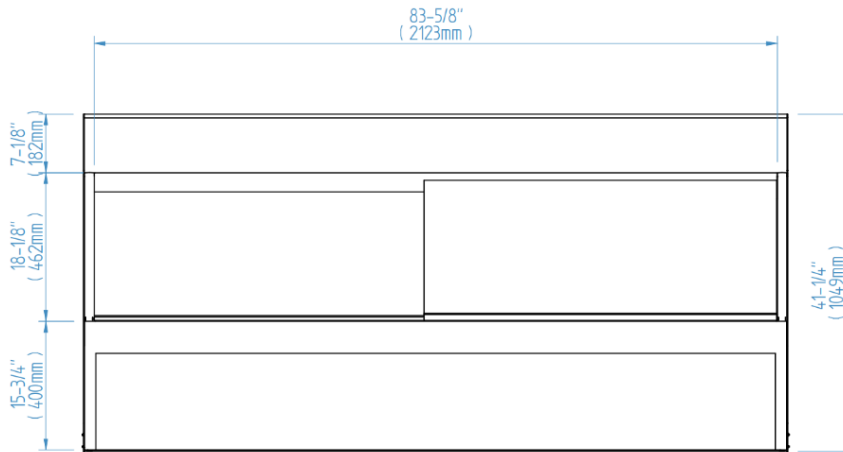
**ELEVATION**



**RIGHT VIEW**



**PLAN VIEW**



**IDC-VCB24H**

ETL LISTED TO UL471 STANDARD AND SANITATION CLASSIFIED TO NSF7 – WE RESERVE THE RIGHT TO CHANGE SPECIFICATIONS WITHOUT PRIOR NOTICE

Project: \_\_\_\_\_

Location: \_\_\_\_\_

Item #: \_\_\_\_\_ Quantity: \_\_\_\_\_

Model #: \_\_\_\_\_

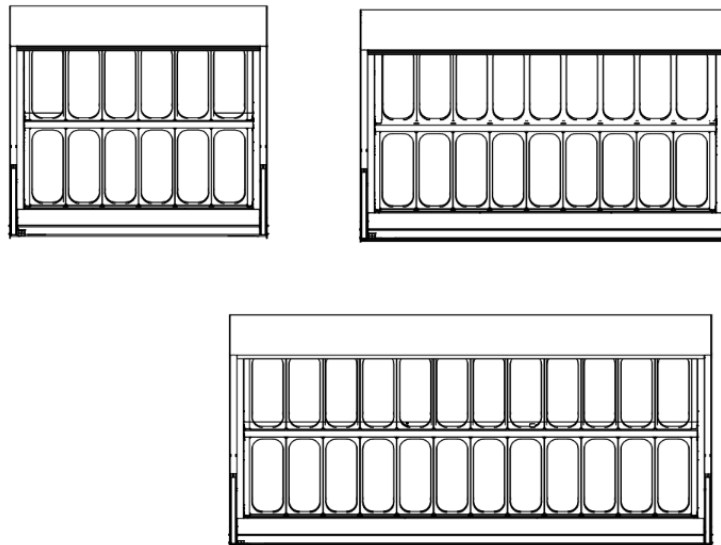
MODEL: IDC-VCB12H  
IDC-VCB18H / IDC-VCB24H

*Gelato display cases*

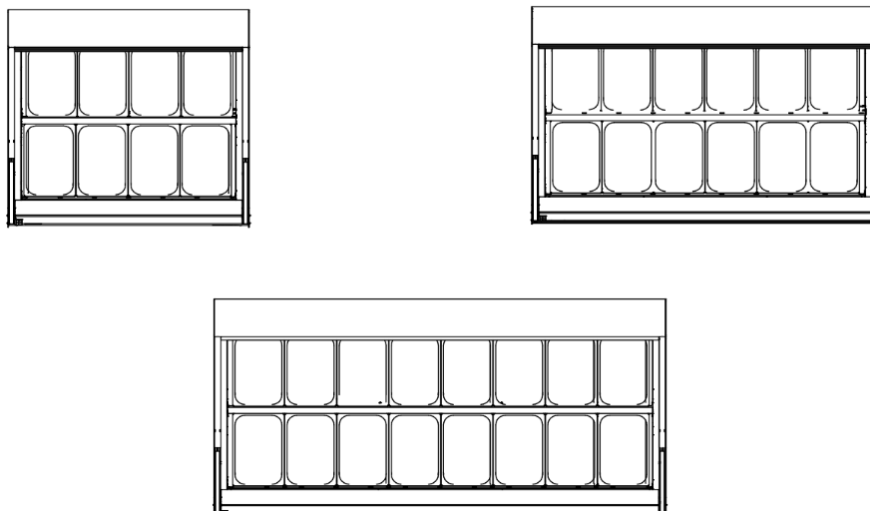
**OPCIONAL FEATURES**

**TRAY COMBINATIONS**

- Option one



- Option two



ETL LISTED TO UL471 STANDARD AND SANITATION CLASSIFIED TO NSF7 – WE RESERVE THE RIGHT TO CHANGE SPECIFICATIONS WITHOUT PRIOR NOTICE