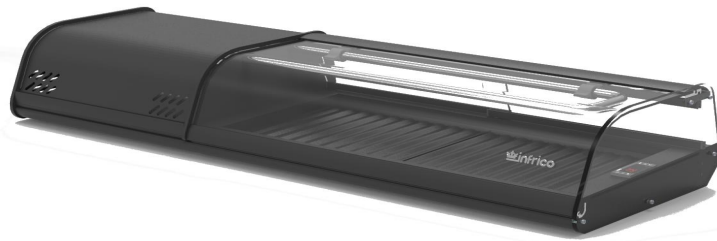


Project: \_\_\_\_\_  
 Location: \_\_\_\_\_  
 Item #: \_\_\_\_\_ Quantity: \_\_\_\_\_  
 Model #: \_\_\_\_\_

MODEL: **ICT-VSU4P**

**SUSHI CASES – Left side condensing unit**

**Important:** Only display refrigerated product in Sushi Case. It is recommended that Sushi Case is cleaned daily and disconnected.



**General Strengths**

- ✓ **Sanitation.** The interior cabinet is built with rounded corners (extensive radius for easy cleaning). Quick ability to take off shelves and slides for interior cleaning. Each cabinet has a drain at the bottom of the unit. When cleaning the unit make sure the drain hose is routed to a floor drain.
- ✓ **Lighting.** Interior cabinet includes LED lighting, for brighter lighting and energy efficiency, LED saves 90% more energy compared to traditional fluorescent bulbs. Considerably increases product visibility.
- ✓ **Control systems.** Higher precision in managing temperature settings. The ability to adjust temperature ranges to meet end user’s requirements.
- ✓ **100% Tested.** All condenser units tested 100%, in helium chambers to refrigerant leak detections.
- ✓ **Certified.** Audited and Certified by **INTERTEK** for compliance with UL 471 and NSF 7. EQA audited and certified by internationally recognized firm. ISO 9001:2015 (Quality); ISO 14001:2015 (Environmental); ISO 45001:2018 (Prevention and Worker Safety)

Revision:01 Date: 29/07/2022 ICT-VSU4P

MODELS	Dimensions (inches) (mm)			Doors	Ref.	Ref.Weight (Lbs.) (gr.)	Temperature Range (°F) (°C)	Cond. Unit (H.P)	Capacity (Cu.Ft.) (L)	Case Amps 115V	Net weight (Lbs.) (Kg.)
	W	D	H								
ICT-VSU4P	50-1/4 (1268)	16-1/8 (410)	9-1/8 (230)	2	R290	0,17 (80)	30 °F/34 °F (-1°C/+1°C)	1/8	0,325 (9,2)	3,2	115 (52)

ETL LISTED TO UL471 STANDARD AND SANITATION CLASSIFIED TO NSF7 – WE RESERVE THE RIGHT TO CHANGE SPECIFICATIONS WITHOUT PRIOR NOTICE



**INFRICO-North America Corporate División**  
 11200NW 25<sup>th</sup> St ste 123, Sweetwater. FL, 33172  
 (305) 777 9599

[www.infrico.us](http://www.infrico.us)  
[sales@infrico.com](mailto:sales@infrico.com)  
[service@infrico.com](mailto:service@infrico.com)

Project: \_\_\_\_\_  
 Location: \_\_\_\_\_  
 Item #: \_\_\_\_\_ Quantity: \_\_\_\_\_  
 Model #: \_\_\_\_\_

<b>MODEL: ICT-VSU4P</b>	<b>SUSHI CASES – Left side condensing unit</b>
-------------------------	--

**STANDARD FEATURES**

➤ **Exterior**

- AISI 304 Stainless Steel,
- Tilt-forward security tempered glass system,
- Real sliding windows, included,
- Anodized aluminum silver profile,
- Levelling feet.

➤ **Interior**

- AISI 304 Stainless Steel,
- Plastic exhibition tray,
- Internal drain plug for easy cleaning,
- **LED Lighting** in top profile

➤ **Insulation**

- Polyurethane with high density 40kg/m<sup>3</sup>, CFS free, zero ODP and low GWP.
- Low GWP & Zero ODP effect.

➤ **Refrigeration**

- Digital temperature controller,
- Manual defrost system,
- Gravity coil on top and cold plate refrigeration system on the bottom,
- Refrigeration capacity: 614 Btu/h (14°F) / **180 W (-10°C)**.

➤ **Electrical**

- Cord and NEMA 5-15P plug,
- Electrical connection is 115V/ 1ph / 60 Hz.



**OPTIONAL FEATURES**

- ✓ Electrical connections is:  
 220 – 230 V / 1 ph / 50Hz (plug type varies).

➤ **ETL Listed to UL471 Standard and Sanitation Classified to NSF7.**

ETL LISTED TO UL471 STANDARD AND SANITATION CLASSIFIED TO NSF7 – WE RESERVE THE RIGHT TO CHANGE SPECIFICATIONS WITHOUT PRIOR NOTICE

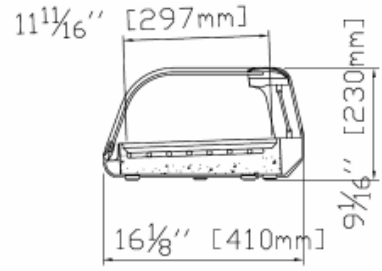
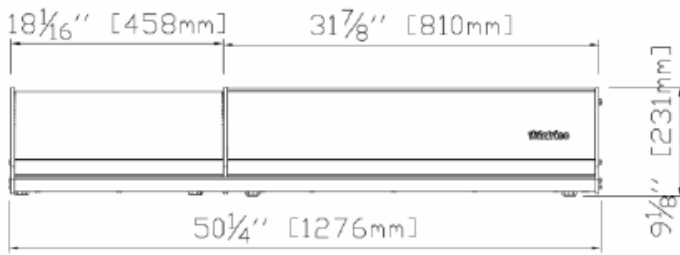


Project: \_\_\_\_\_  
 Location: \_\_\_\_\_  
 Item #: \_\_\_\_\_ Quantity: \_\_\_\_\_  
 Model #: \_\_\_\_\_

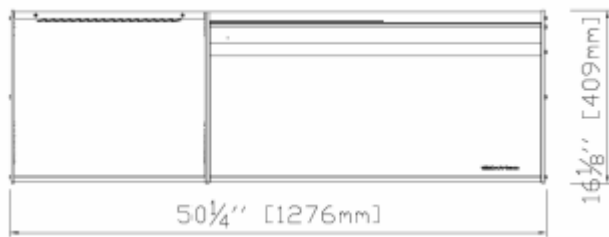
**MODEL: ICT-VSU4P** *SUSHI CASES – Left side condensing unit*

**PLAN VIEW**

**ELEVATION** **RIGHT VIEW**



**PLAN VIEW**



ETL LISTED TO UL471 STANDARD AND SANITATION CLASSIFIED TO NSF7 – WE RESERVE THE RIGHT TO CHANGE SPECIFICATIONS WITHOUT PRIOR NOTICE

Revision: 01 Date: 29/07/2022 IRT-VSU4P