

**MODEL: IBC-ABT201CBI**  
**IBC-ABT202CBI**

**Blast Chillers and Shock Freezers.**



**GENERAL FEATURES**

- ✓ **Blast Chiller Functions.** Experience the game-changing benefits of our advanced blast chiller functions. Swiftly reduce core temperatures, preserving freshness, hygiene, and quality while minimizing bacterial growth. Elevate your food preservation standards with ease and confidence.
- ✓ **Sanitation.** Our cabinets prioritize sanitation with rounded corners for easy cleaning.
- ✓ **Doors.** Self-closing door system features a permanent pressure mechanism, ensuring a secure closure every time. Additionally, a convenient 'stay open' feature engages when the door remains open at 95 degrees or beyond. Our doors also include triple chamber door gaskets that are easy to remove and snap in, ensuring an effective seal.
- ✓ **Control System.** Our temperature management system offers unparalleled precision, allowing for highly accurate temperature settings. With greater flexibility in adjusting temperature ranges, our system can be tailored to meet the unique needs of each end user. This ensures optimal performance and maximum satisfaction with every use.
- ✓ **100% Tested.** All condenser units are 100% tested, in helium chambers for refrigerant leak detections.
- ✓ **Certified.** Audited and Certified by INTERTEK for compliance with UL 471 and NSF 7.



Review:02 Date: 07/03/2023 IBC-ABT201\_202CBI

ETL LISTED TO UL471 STANDARD AND SANITATION CLASSIFIED TO NSF7 – WE RESERVE THE RIGHT TO CHANGE SPECIFICATIONS WITHOUT PRIOR NOTICE

**MODEL: IBC-ABT201CBI**  
**IBC-ABT202CBI**

***Blast Chillers and Shock Freezers.***

**STANDARD FEATURES**

➤ **Doors**

- Polyurethane insulated door.
- Self-closing door with stay open feature.
- Heavy-duty hinges with horizontal and vertical adjustment.
- Triple chamber snap in door gaskets for easy removal and cleaning.
- Heated door frame to avoid accumulation of ice.

➤ **Interior**

- AISI 304 Stainless Steel.
- Sealed interior floors and rounded cabinet corners.
- Includes an easy to use heated conical product probe.

➤ **Insulation**

- CFC-Free polyurethane, entire cabinet structure is foamed-in using a high – density polyurethane insulation.
- Low GWP & Zero ODP effect.

➤ **Mobile racks: IBC- ABT 201 CBI**

The cabinet can accommodate one mobile rack with maximum dimensions:

**Width: 27"**  
**Depth: 33"**  
**Height: 72"**

➤ **Mobile racks: IBC – ABT 202 CBI**

The cabinet can accommodate one mobile rack with maximum dimensions:

**Width: 32"**  
**Depth: 40"**  
**Height: 72"**

➤ **Exterior**

- AISI 304 Stainless Steel.
- Compliant with HACCP regulations.
- Copper Drain Line.

➤ **Refrigeration**

- Control panel with an easy to read screen and menu.
- Manual defrost during cycles and automatic defrost during maintenance.
- Evaporator coil coated with anti – corrosion material 100% polyester.
- Forced air refrigeration system.
- **Blast chilling:** + 149 °F (65 °C) to + 37°F (3°C) in less than 90 minutes.
- **Blast freezing:** +149 °F (65 °C) to 0°F (-18 °C) in less than 4 hours.

➤ **Digital Control**

- Interactive control screen & menu.
- Up to 99 different customized cycles.
- USB connection.



➤ **Electrical**

- **Cord only included.**
- **Electrical connection is 220V/3ph/60Hz.**
- **Equipment will not operate correctly with voltages lower than 208V.**
- **Must be connected to 45 Amp. Circuit breaker!**

➤ **Drain**

- **This equipment requires to be connected to a Drainline.**
- **A P-trap is required.**



➤ **ETL Listed to UL471 Standard and Sanitation classified to NSF7.**

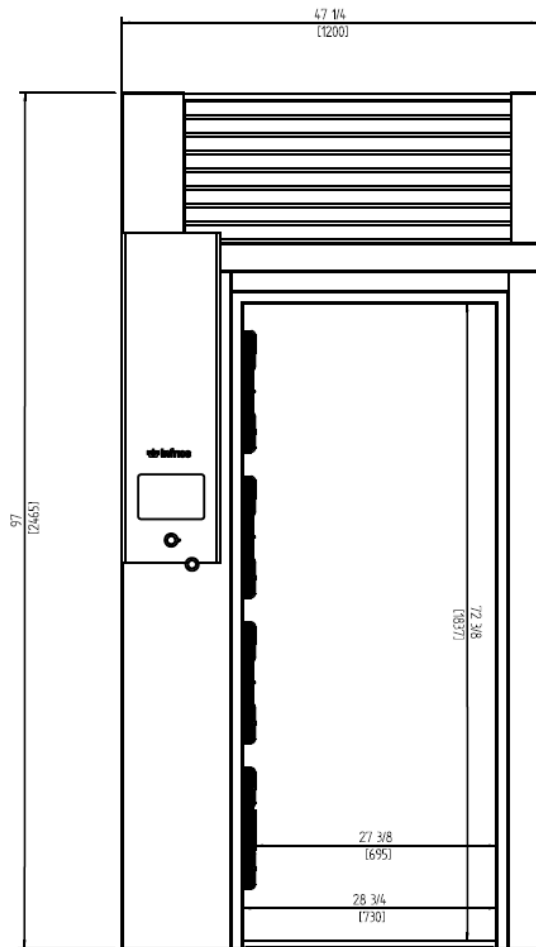
**MODEL: IBC-ABT201CBI  
 IBC-ABT202CBI**

**Blast Chillers and Shock Freezers.**

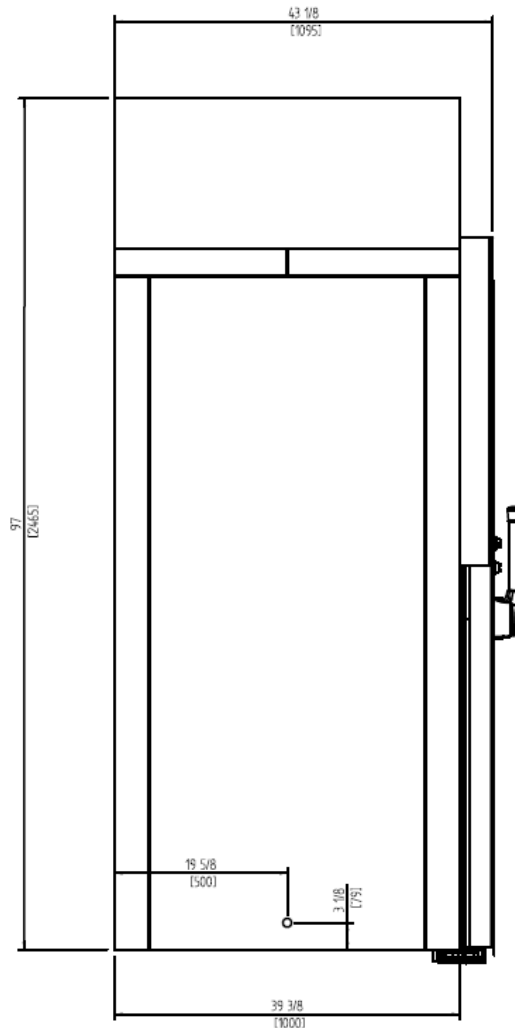
MODELS	Dimensions (inches) (mm)			Doors	Ref.	Ref.Weight (Lbs.) (gr.)	Temperature Range (°F) (°C)	Cond. Unit (H.P)	Capacity (Cu.Ft.) (L)	Case Amps 115V	Net weight (Lbs.) (Kg.)
	W	D	H								
IBC-ABT201CBI	47-1/4 (1.200)	44-1/4 (1.125)	97 (2.465)	1	R452a	5,51 (2.500)	-40°F (+3°C/ -40°C)	4	60 (1704)	24,91	992 (450)
IBC-ABT202CBI	55-1/8 (1.400)	51 (1.295)	97 (2.465)	1	R452a	6,61 (3.000)	-40°F (+3°C/ -40°C)	4	66 (1860)	25,81	1014 (460)

**PLAN VIEW**

**ELEVATION**



**RIGHT VIEW**



**IBC-ABT201CBI**

Review:02 Date: 07/02/2023 IBC-ABT201\_202CBI

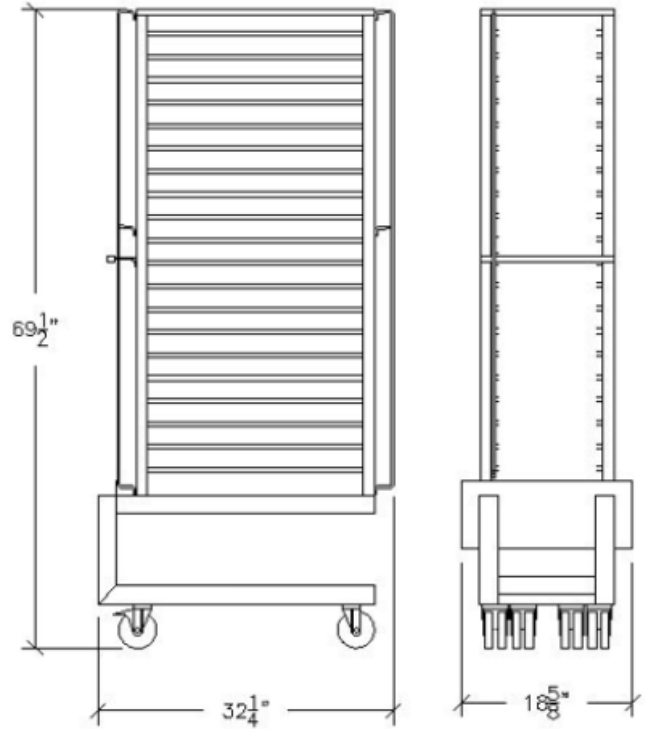
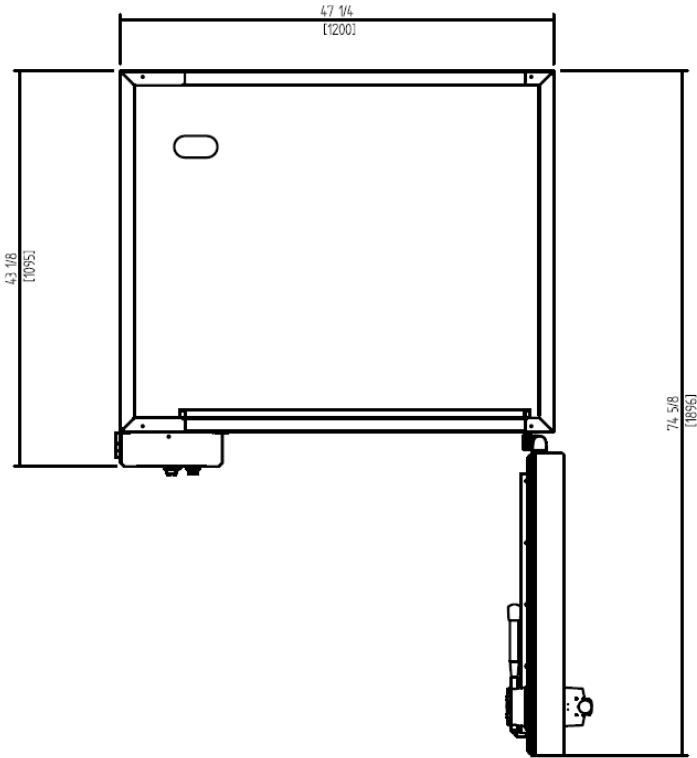
ETL LISTED TO UL471 STANDARD AND SANITATION CLASSIFIED TO NSF7 – WE RESERVE THE RIGHT TO CHANGE SPECIFICATIONS WITHOUT PRIOR NOTICE

**MODEL: IBC-ABT201CBI**  
**IBC-ABT202CBI**

**Blast Chillers and Shock Freezers.**

**PLANT VIEW**

**COMBI OVEN**



**IBC-ABT201CBI**

Review:02 Date: 07/03/2023 IBC-ABT201\_202CBI

ETL LISTED TO UL471 STANDARD AND SANITATION CLASSIFIED TO NSF7 – WE RESERVE THE RIGHT TO CHANGE SPECIFICATIONS WITHOUT PRIOR NOTICE



**INFRICO-North America Corporate División**  
 11200NW 25<sup>th</sup> St ste 123, Sweetwater. FL, 33172  
 (305) 777 9599

[www.infrico.us](http://www.infrico.us)  
[sales@infrico.com](mailto:sales@infrico.com)

Project: \_\_\_\_\_

Location: \_\_\_\_\_

Item #: \_\_\_\_\_ Quantity: \_\_\_\_\_

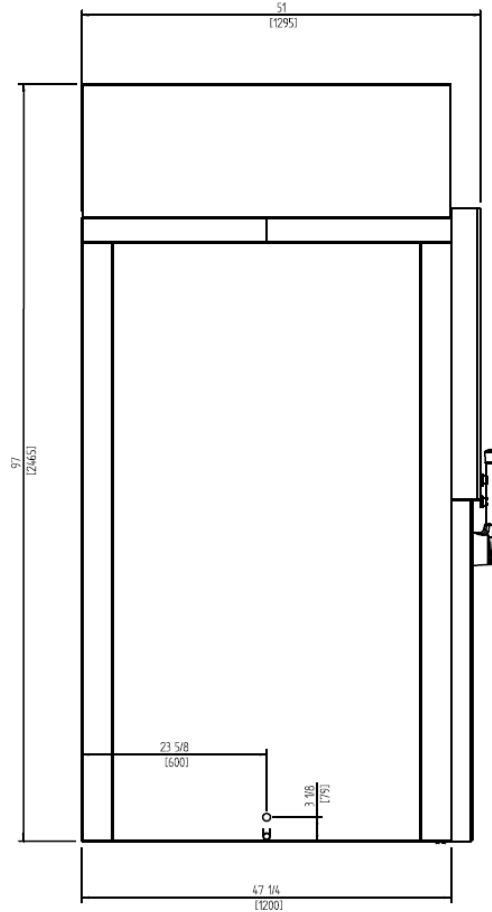
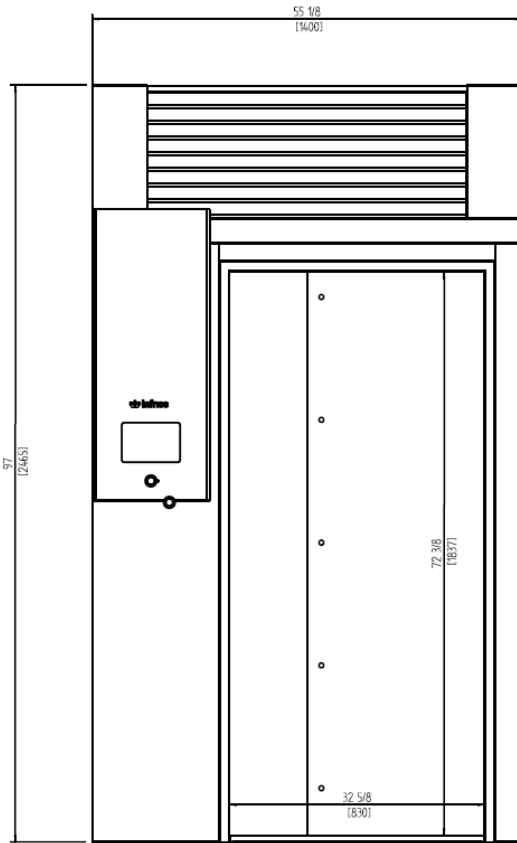
Model #: \_\_\_\_\_

**MODEL: IBC-ABT201CBI**  
**IBC-ABT202CBI**

**Blast Chillers and Shock Freezers.**

**ELEVATION**

**RIGHT VIEW**



**IBC-ABT202CBI**

Review:02 Date: 07/03/2023 IBC-ABT201\_202CBI

ETL LISTED TO UL471 STANDARD AND SANITATION CLASSIFIED TO NSF7 – WE RESERVE THE RIGHT TO CHANGE SPECIFICATIONS WITHOUT PRIOR NOTICE



**INFRICO-North America Corporate División**  
11200NW 25<sup>th</sup> St ste 123, Sweetwater. FL, 33172  
(305) 777 9599

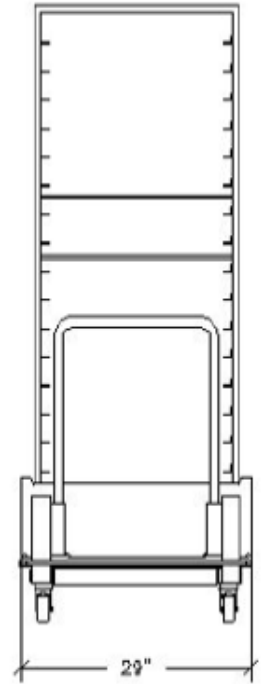
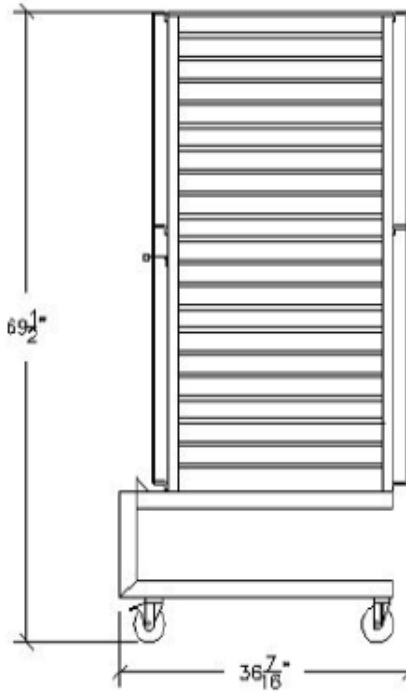
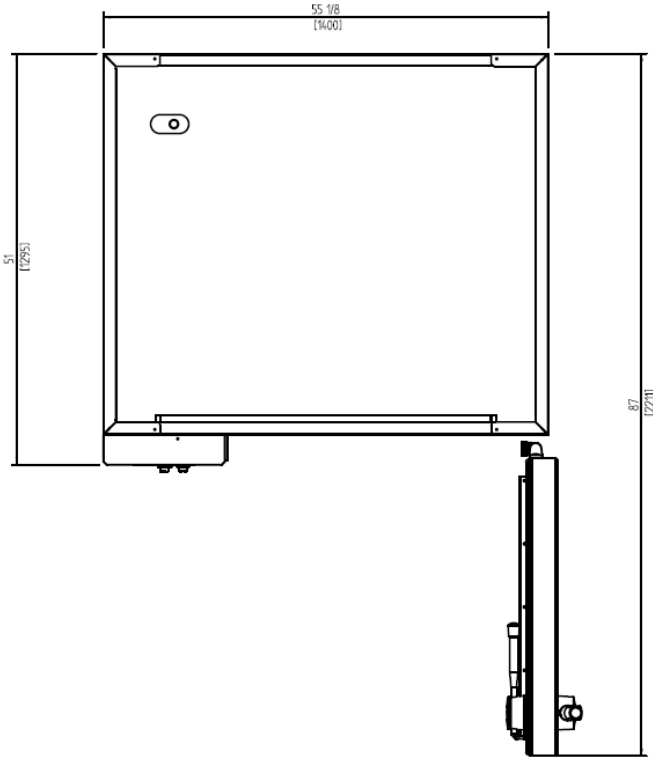
[www.infrico.us](http://www.infrico.us)  
[sales@infrico.com](mailto:sales@infrico.com)

**MODEL: IBC-ABT201CBI**  
**IBC-ABT202CBI**

**Blast Chillers and Shock Freezers.**

**PLANT VIEW**

**COMBI OVEN**



**IBC-ABT202CBI**

Review:02 Date: 07/03/2023 IBC-ABT201\_202CBI

ETL LISTED TO UL471 STANDARD AND SANITATION CLASSIFIED TO NSF7 – WE RESERVE THE RIGHT TO CHANGE SPECIFICATIONS WITHOUT PRIOR NOTICE