

ESTABLISHING A **NEW STANDARD** IN THE FOODSERVICE INDUSTRY.

Energy efficient, durable freezer and cooler providing perfect temperature preservation and performance.



KEY FEATURES



• Eco-Friendly Refrigerant

Environmentally friendly hydrocarbon refrigerant has low Global Warming Potential (GWP). Meets all USA & California refrigerant & energy standards.



• Electronic Temperature Controller

CIR RS232 & CIR EVO electronic controllers assure optimal refrigeration performance through precision temperature control, intelligent control for defrost cycle, compressor & other component functions.



• High Power Reliable Refrigeration System.

Refrigeration System Fast pull down, optimal internal air circulation and reliable refrigeration, maintaining colder temperatures for food preservation.



• Newly Designed Condenser

New condenser featuring a joints reduction down to zero, increasing long term refrigeration reliability and safeguarding against any system leaks.



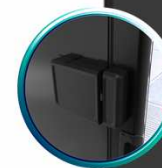
• Standard LED Lighting System

Ultra bright low energy interior LED illumination system provides optimal merchandise display visibility. Low profile, door mounted, clip-in LED design.



• Spark-Free Refrigeration Components

All Reach-In models will have spark free refrigeration components for optimal safety, per UL requirements.

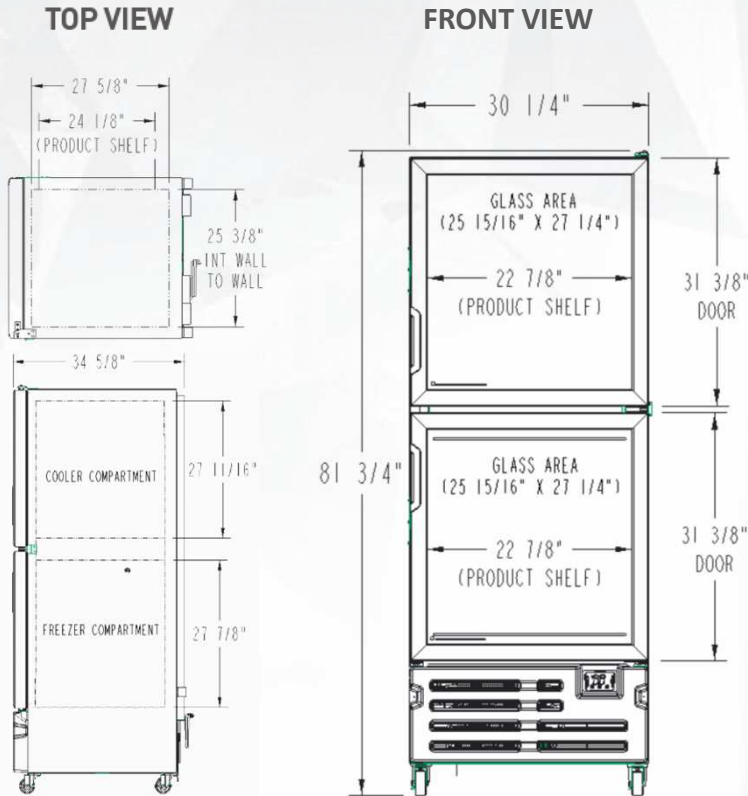


• Insight Health Lock:

NAMA certified health lock system, with integrated Bluetooth communication: APP allows operators to lock & unlock on location via Bluetooth.

ESTABLISHING A **NEW STANDARD** IN THE FOODSERVICE INDUSTRY.

PRODUCT VIEWS



ADDITIONAL FEATURES



TECHNICAL SPECIFICATIONS

Gross Internal Cooler Dimensions & Capacity	Gross Internal Freezer Dimensions & Capacity	Gross Total Refrigerated Dimensions & Capacity
H: 27 11/16" 70.3 cm	H: 27 7/8" 70.8 cm	H: 55 1/2" 141.1 cm
W: 25 3/8" 64.5 cm	W: 25 3/8" 64.5 cm	W: 25 3/8" 64.5 cm
D: 27 5/8" 70.1 cm	D: 27 5/8" 70.1 cm	D: 27 5/8" 70.1 cm
Capacity 11.2 ft (317.8 lt)	Capacity 11.3 ft (320.1 lt)	Capacity 22.5 ft (637.9 lt)

Net Usable Cooler Dimensions & Capacity	Net Usable Freezer Dimensions & Capacity	Net Total Refrigerated Dimensions & Capacity
H: 27 11/16" 70.3 cm	H: 18 7/8" 47.9 cm	H: 46 1/2" 118.1 cm
W: 22 7/8" 58.1 cm	W: 22 7/8" 58.1 cm	W: 22 7/8" 58.1 cm
D: 24 1/8" 61.4 cm	D: 24 1/8" 61.4 cm	D: 24 1/8" 61.4 cm
Capacity 8.8 ft (250.7 lt)	Capacity 6 ft (170.8 lt)	Capacity 14,8 ft (421.3 lt)

Doors	Cooler Door construction	Freezer Door construction
2 (Plastic frame)	<ul style="list-style-type: none"> Low_E external glass 	<ul style="list-style-type: none"> Low_E external glass Heated glass door
Shelves	6	Shelves Size W: 22 7/8" 58 cm D: 24 1/8" 61.4 cm

REFRIGERATION PERFORMANCE DATA

Refrigerant	Energy Consumption	
R290 3.0 oz (0.085 kg)	7.0 kWh/24h	
Compressor Power	Condenser	
1/2 HP 326 Watts	Dynamic	
	Cut-Out	Cut-In
Cooler default thermostat setting	27°F (-2.7°C)	28.2°F (-2.1°C)
Freezer default thermostat setting	T1 -4.5°F (-20.2°C)	-1.8°F (-18.8°C)
	T2 -0.4°F (-18.0°C)	1.4°F (-17.0°C)
	T3 -7.4°F (-21.8°C)	-4.7°F (-20.4°C)
	T4 -9.4°F (-23.0°C)	-7.6°F (-22.0°C)

ELECTRICAL DATA

Power supply	AMPS	Lighting
115V/60 Hz	6.3 A	100 Lux Output 6 modules 8 LED per module
Plug Type	Controller	Cord Length
NEMA 5-15P	CIR RS232 & CIR EVO	118" (300 cm)

LOGISTIC DATA

Trailer Loads	Unit weight with packaging	External Dimensions With Packaging
20': 14	385.8 lb 175 kg	H: 83 1/2" 212 cm
40': 28		W: 32 3/4" 83.2 cm
53': 51	381.4 lb 173 kg	D: 36 3/4" 93.5 cm

Customer service and warranty
 Three years limited warranty, includes parts and labor.
 An additional two years warranty is issued on the compressor (USA & Canada only).
 Operators must follow installation and operational guidelines per Imbera Users Manual.
 Each cooler must be connected directly to a single power supply, otherwise warranty will be voided.
 Customer service: 866.548.5770

*Energy consumption based on ANSI/ASHRAE Standard 72-2005
 *BMAD System (Low maintenance high performance)
 *Dimensions rounded up to the nearest inch or centimeter
 *Specifications subject to change without notice
 *H: Height, W: Width, D: Depth
 19/01/24