

ESTABLISHING A NEW STANDARD IN THE COMERCIAL REFRIGERATION INDUSTRY

Energy efficient, environmentally friendly, featuring spark-free components, low refrigerant charge and the most attractive product display.

KEY FEATURES



ECO-FRIENDLY HC NATURAL REFRIGERANT

New R290 HFC-free refrigerant gas that reduces environmental impact and increases efficiency.



NEWLY DESIGNED CONDENSER

New condenser featuring a joints reduction down to zero increasing long term refrigeration reliability and safeguarding against any system leaks.



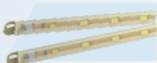
ELECTRONIC TEMPERATURE CONTROLLER

Electronic controller assures optimal refrigeration performance through precision temperature control, and intelligent control for defrost cycle, compressor & other component functions.



ELECTRONIC FAN MOTORS

Enhances performance and efficiency. Uses only a fraction of the energy and offers longer life expectancy than industry standard shaded-pole motors.



LED Efficiency +220 LUX MINIMUM OUTPUT

New 5th generation constant power ultra-high efficiency LED uses lowest energy possible, with highest light output.



Spark-free refrigeration components

All HC models will have spark free refrigeration components for optimal safety, per UL requirements

TECHNICAL SPECIFICATIONS

Exterior dimensions	Internal dimensions	Usable interior capacity
H: 78 7/8" (200.3 cm)	H: 59 5/8" (151.44 cm)	H: 51 5/8" (131cm)
W: 54 1/4" (137.7 cm)	W: 50 1/8" (127.3 cm)	W: 47 1/2" (121cm)
D: 31 3/8" (79.6 cm)	D: 24 7/8" (63.1 cm)	D: 19 1/8" (49cm)
Usable volume	43 ft ³ (1217 lts)	
Doors	2	
Door construction	Plastic frame	
Shelves	10	
Shelf size	W: 24 1/4" (61.5 cm) D: 19 3/4" (50.2 cm)	
External material	Black embossed steel	
Internal material	Pre-painted steel	

DATA CAPACITY**

20 oz bottle capacity	
Total:	1260
Facings per shelf:	9
Total facings:	180

REFRIGERATION PERFORMANCE DATA

Refrigerant	R290	3.35 o.z	(0.095kg)
Energy consumption	4.680 kwh / 24 h		
Compressor power	1/4 HP	405 Watts	
Condenser	Dynamic		
Thermostat setting default	Cut-out 32°F (0°C)	Cut-in 44.6°F (7°C)	

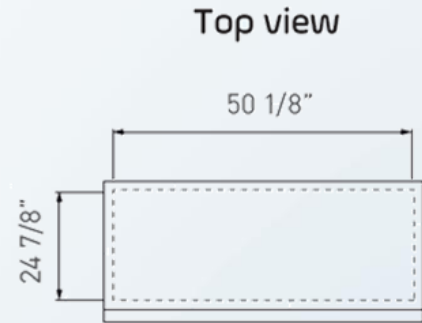
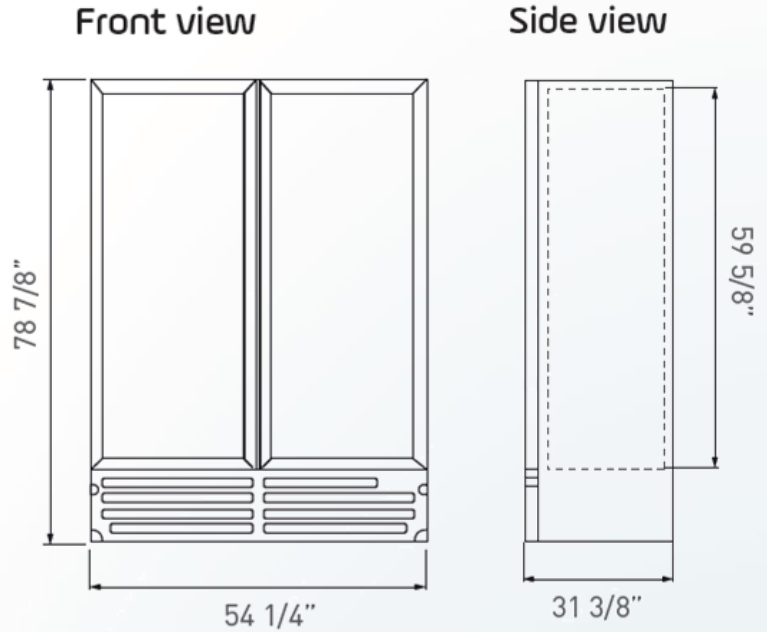
ELECTRICAL DATA

Power supply	115 / 60 Hz	
Amps	6.6	
Length of cord	118 (300cm)	
Lighting	6 modules	144 total LED'S
Plug type	B	
Controller	EET	

LOGISTIC DATA

Trailer loads	20': 7
	40': 24
	53': 30
Unit weight w/packaging	H: 82 1/2"
Dimensions w/packaging	W: 56 1/2"
	D: 32 1/4"

PRODUCT VIEWS



- *Energy consumption based on C condition
- *BMAD System (Low maintenance high performance)
- *Dimensions rounded up to the nearest inch or millimeter
- *Specifications subject to change without notice
- *H: Height, W: Width, D: Depth
- **Product capacity expressed at its highest level

Customer service and warranty
Operators must follow installation and operational guidelines per Imbera Users Manual
Each cooler must be connected directly to a single power supply, otherwise warranty will be voided

07/04/2023