

Energy efficient, eco-friendly hydrocarbon refrigerant with low charge, spark-free components, providing the greatest reliability. Designed with detailed quality to meet all food safety requirements of the foodservice industry

## KEY FEATURES



### **Electronic Temperature Control**

Ensures optimal equipment performance by maintaining Products at the ideal temperature for consumption.



### **Eco Friendly Refrigerant**

Environmentally friendly hydrocarbon refrigerant has low Global Warning Potential (GWP). Meets all USA refrigerant and energy standards.



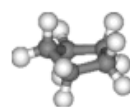
### **Electronic Fan Motor**

These motors provide improved performance by using only a fraction of the energy required by shaded pole motors.



### **Stainless Steel Material**

High quality material for food preservation, complying with safety and hygiene standards.



### **Cyclopentane Insulation Foam**

It is ecofriendly as it does not contain CFC (Chlorofluorocarbons) or HFC (Hydrochlorofluorocarbons) and is a highly efficient insulator.



## TECHNICAL SPECIFICATIONS

### Exterior Dimensions

H: 34 3/4" 88 cm  
W: 71 1/2" 182 cm  
D: 32 7/8" 83 cm

### Interior Dimensions

H: 26 1/8" 66 cm  
W: 66 7/8" 170 cm  
D: 24 7/8" 63 cm

Doors	3	
Door construction	Solid Stainless Steel	
Shelves	3	
Central Shelve size	W: 22 1/2" (57 cm)	D: 10 5/8" (27 cm)
Side Shelves size	W: 20 7/8" (53 cm)	D: 10 3/8" (26.5 cm)
External Material	Stainless Steel	
Internal Material	Stainless Steel	

## REFRIGERATION PERFORMANCE DATA

Refrigerant	R-290 2.8 Oz (0.08 kg)	
Energy consumption	2.418 kWh/24h	
Compressor Power	1/4 Hp	
Condenser	Dynamic	
Thermostat setting default	32 °F (0° C)	44.6 °F (7 °C)

## ELECTRICAL DATA

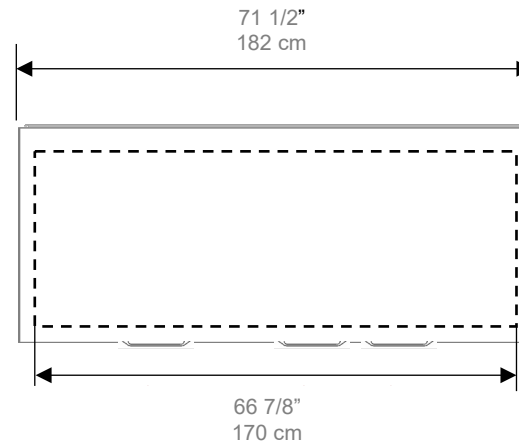
Power supply	115V / 60 Hz	
AMPS	3.2 A	
Cord lenght	118.11" (300 cm)	
Lighting	N/A	
Plug type	NEMA 5-15P	
Controller	CIR	

## LOGISTIC DATA

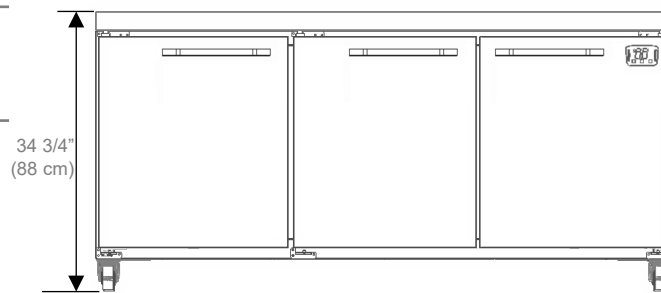
Trailer Loads	53": 34			
Weight	Gross		Net	
	165 kg	363.8 lb	139.5 kg	307.7 lb
Dimensions w/packaging	H: 43 1/8"	109 cm		
	W: 78 3/4"	200 cm		
	D: 36 1/2"	93 cm		

## PRODUCT VIEWS

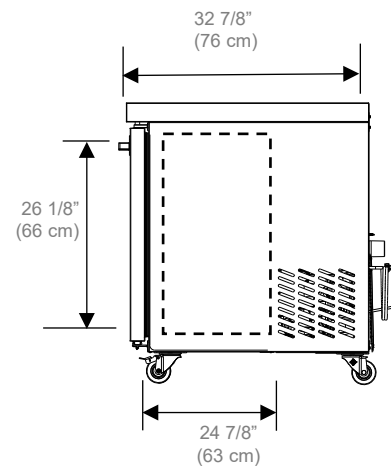
Top view



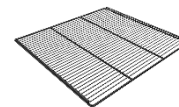
Front view



Side view



## ADDITIONAL FEATURES



**Black Shelves**



**Pre – Installed Casters**

\*Energy consumption based on ANSI/ASHRARE Standard 72-2005  
\*BMAD System (Low maintenance high performance)  
\*Dimensions rounded up to the nearest inch or centimeter  
\*Specifications subject to change without notice  
\*H:Height, W:Width, D:Depth

### Customer Service and warranty

Five years limited warranty, includes parts and labor.  
An additional two warranty is issued on the compressor (USA & Canada only).  
Operators must follow installation and operational guidelines per Imbera Users Manual.  
It is essential that each cooler is directly connected to a single power supply, failure to do so will result in voiding the warranty.  
Customer service: 866.548.5770 .

CONTACT INFORMATION  
IMBERA | 1925 Shiloh Road, Building #2 Kennesaw, GA 30144  
P: 678-504-6835

22/10/2025