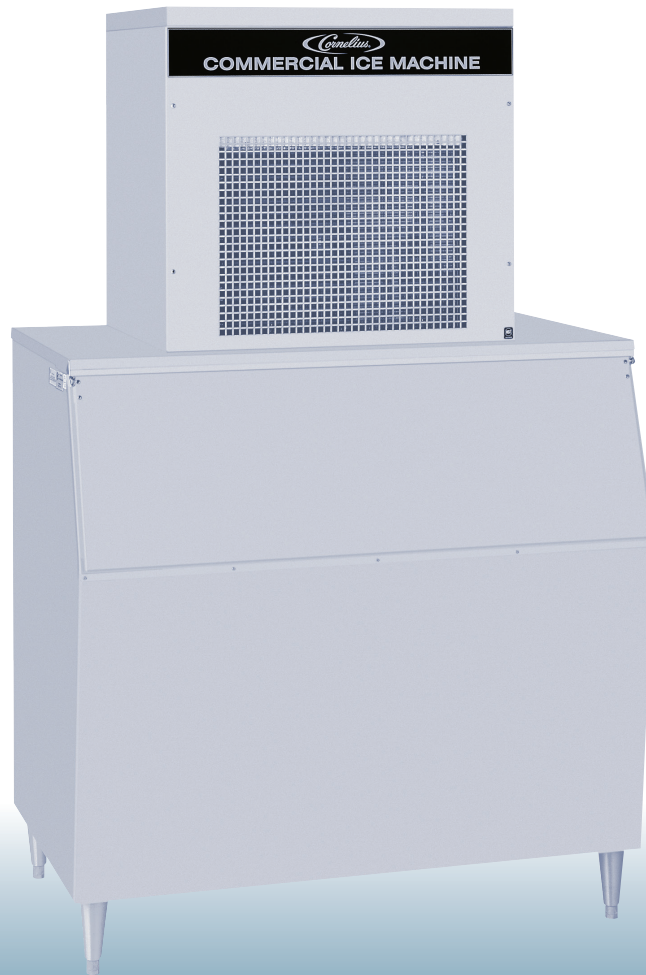




WCC-2001

CHUNKLET ICE MAKER



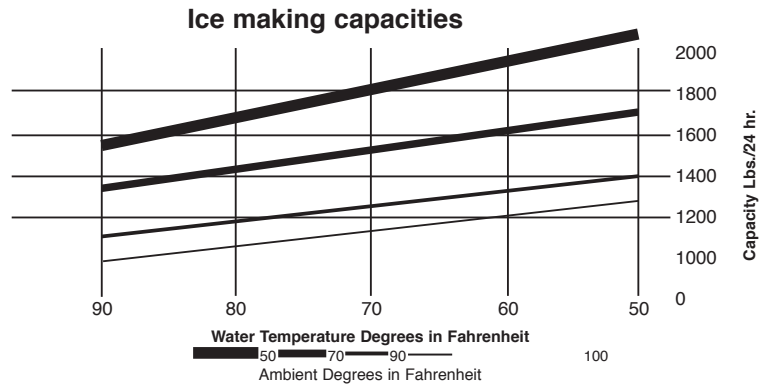
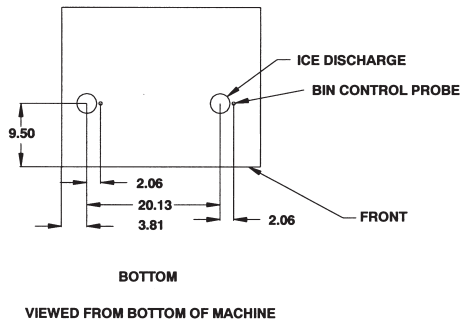
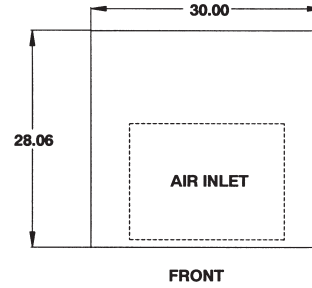
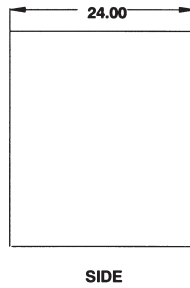
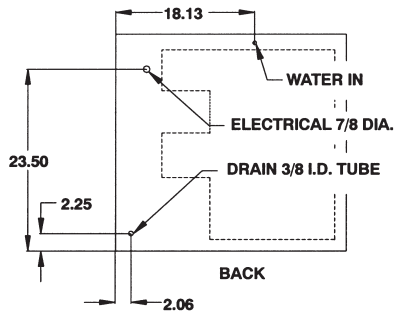
FEATURES

High-yield – Makes up to 1735 lbs of high quality "chewable" chunklet ice per day

Durable – Corrosion-free stainless steel exterior

Environmentally responsible – Energy Efficient and uses CFC-free, R-404A refrigerant

Efficient – Uses 100% of water



PART NUMBER	MODEL NUMBER	ELECTRICAL	VOLTAGE RANGE	CONDENSER	PRODUCTION 70°/50°
569200340	WCC-2001R	208-230 V / 60 Hz	198-253 V	Remote	1735 lb (788 kg)

TECHNICAL SPECIFICATIONS

COMPRESSOR 2 HP
 REFRIGERANT CFC-Free, R-404A
 VOLTAGE 208-230 V / 60 Hz
 MINIMUM CIRCUIT 25 Amps
 CABINET CONSTRUCTION Stainless steel

DIMENSIONS 28" x 30"W x 24"D
 (71.12 cm x 76.2 cm x 60.96 cm)
 OPERATING WEIGHT 317 lb (144 kg)
 SHIPPING WEIGHT 342 lb (155 kg)

AGENCY LISTINGS   

