



MODEL EW30XX

WORK TABLES

High polished
430 Series
stainless steel top.

16GA with 3 hat channels



STANDARD FEATURES



High polished 430 Series stainless steel top
Elegant and Durable.



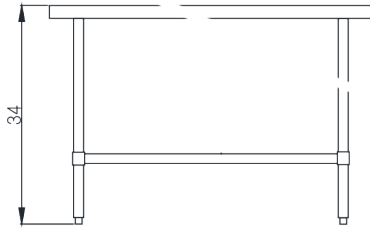
Adjustable under shelf
Enhanced Functionality.



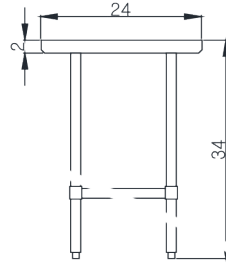
Galvanized steel Under shelf & legs with bullet feet
Built to Last with Sturdy Under Shelf & Legs, Featuring Bullet Feet.

MODEL EW24XX

Top view



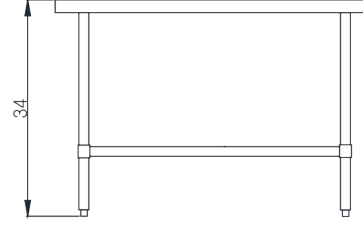
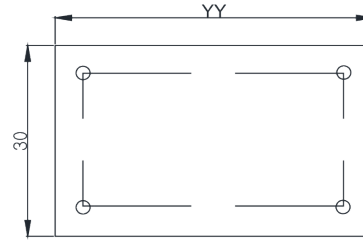
Front view



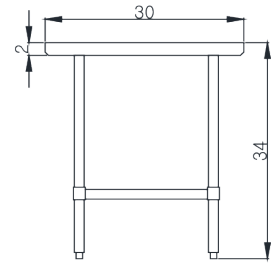
Side view

MODEL EW30YY

Top view



Front view



Side view

Model

Cabinet Dimensions (inches/mm)

Weight (lbs/kg)

Model	Cabinet Dimensions (inches/mm)			Weight (lbs/kg)	
	L	D	H	Net Weight	Ship Weight
EW2418	18" (457mm)	24" (610mm)	34" (864mm)	35(16)	38(17)
EW2460	60" (1524mm)	24" (610mm)	34" (864mm)	73(33)	80(36)
EW2472	72" (1829mm)	24" (610mm)	34" (864mm)	82(37)	90(40)
EW2484	84" (2134mm)	24" (610mm)	34" (864mm)	91(41)	100(45)
EW2496	96" (2438mm)	24" (610mm)	34" (864mm)	104(47)	114(51)
EW3024	24" (610mm)	30" (762mm)	34" (864mm)	48(22)	52(24)
EW3036	36" (915mm)	30" (762mm)	34" (864mm)	60(27)	66(29)
EW3084	84" (2134mm)	30" (762mm)	34" (864mm)	101(46)	111(50)

Blueair
FOOD SERVICE EQUIPMENT

BLUE AIR has right to change specifications without further notice.



blueairfse.com



orders@blueairfse.com



223 W. Rosecrans Ave., CA 90248
T: 310-808-0102

9 W. Shelton Terrace #A, Hillside, NJ 07205
T: 470-625-0182

7025 Amwiler Industrial Drive, Suite A, Atlanta GA
T: 908-688-0970