

Infusion Series Platinum Edition ICB Coffee Brewer



Infusion Series ICB-DV PE
Dimensions: 10.0" x 26.8" x 23.4"
(25.4 cm x 68.1 cm x 59.4 cm)

Features

Infusion Series Platinum Edition ICB Brewer

- 4.3" Color Touchscreen aids in customizing recipes, brewing options and control
- SmartWAVE sprayhead technology provides enhanced uniformity of extraction and lime scale reduction
- USB programming for uploading and downloading recipes and software updates, all in less than a minute
- Brews into 2.5 to 3.8L (84 to 128 oz) airtops and 3.8 to 5.7L (1 to 1.5 gallon) baseless Thermofresh servers
- BUNN Infusion Series technology allows for multiple recipes from one footprint
- Energy-saver mode reduces tank temperature during idle periods
- Exclusive Peak Extraction[™] Sprayhead is multi-directional with a 17-hole design to ensure ultimate uniformity of extraction
- Electronic funnel lock prevents removal of the brew funnel until drip-through is complete
- Brew counter keeps track of how many batches are brewed
- Pre-infusion and pulse brew for maximum flavor extraction. Cold brew lockout & digital temperature control further ensure top-notch brewing
- Hot water faucet (supplied for custom installation)
- Dual voltage adaptable (Can operate at 120V/11.8 amp or 120/208-240V/14.8 amp)

Related Products

Easy Clear[®] EQ-17-TL

Product No. : 30200.1000
Dimensions:
12⁷/₁₆" H x 2¹/₂" W x 3" D
(31.6 cm H x 6.35 cm W x 7.62 cm D)



Easy Clear[®] ED-17-TL

Product No. : 30201.1001
Dimensions:
8³/₄" H x 2⁵/₁₆" Dia.
(20.95 cm H x 5.87 cm Dia.)

Gourmet Filter Pack

Product No. : 20138.1000
Packed per case: 500
Dimensions:
13³/₄" x 5¹/₄"
(34.93cm x 13.34cm)



Model

Infusion ICB-DV PE

Agency Listing



Dimensions & Specifications

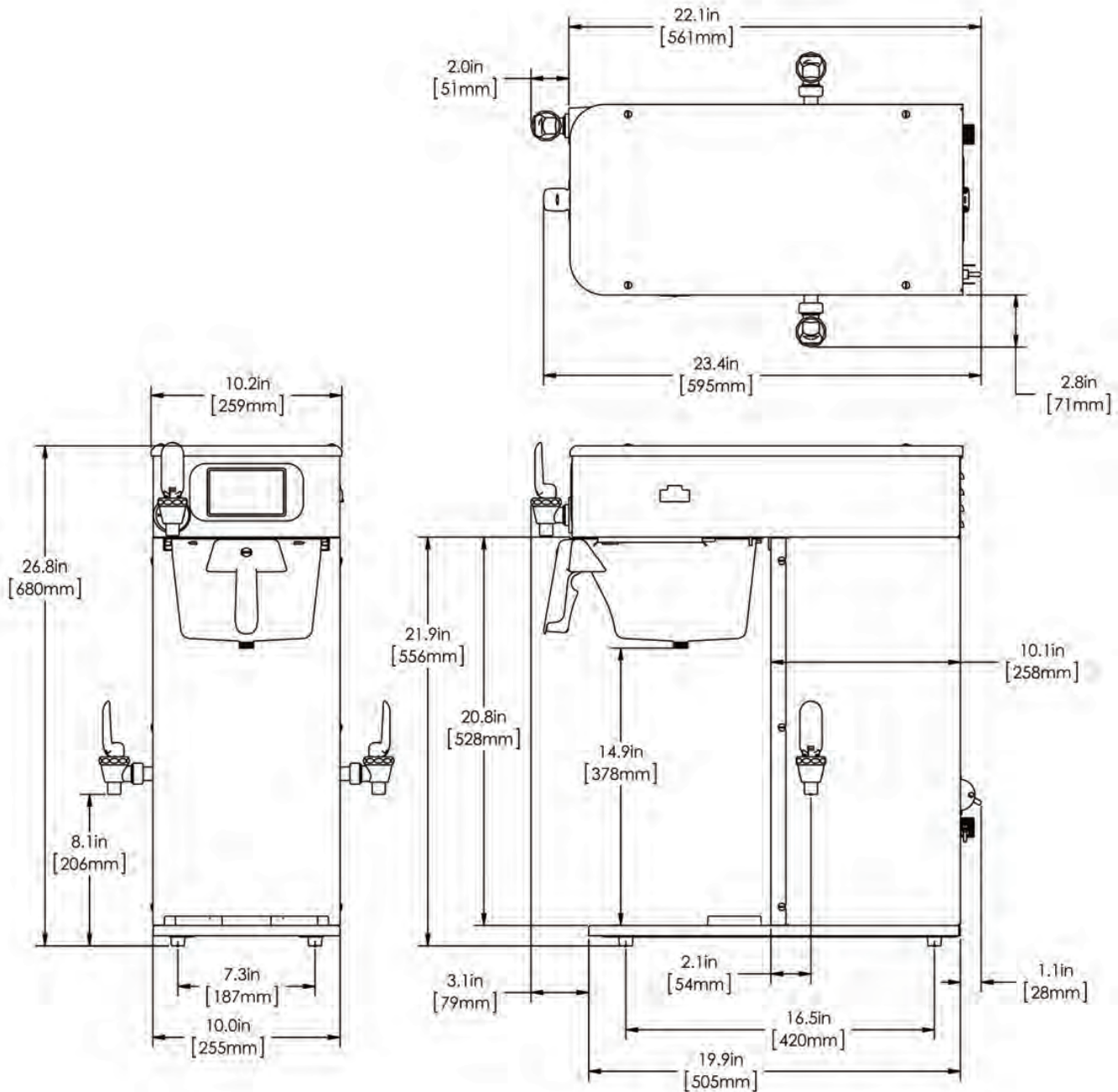


Model	Product #	Volts	Amps	Total Watts	Capacity per hour	Cubic ft ³ /m ³	Weight lbs/kg	Cord Attached
Infusion ICB-DV PE	53300.6100	120	12	1440	5.1gal/19.4L	3.36/.09	46.8/21.2	Yes
		120/208	12.8	2660	6.4gal/24.5L	3.36/.09	46.8/21.2	No
		120/240	14.8	3540	7.4gal/28.3L	3.36/.09	46.8/21.2	No

Capacity: Incoming water temp of 60°F (15.5°C)

Electrical: Requires 2-wires plus ground service rated 120/240V, single phase, 60Hz. Brewer is supplied with a cordset and a NEMA 5-15P plug. Receptacle is not included (NEMA 5-15P).

Plumbing: 20-90 psi (138-621 kPa). Supplied with 3/8" male flare fitting.



Bunn-O-Matic® Corporation of Canada • 280 Industrial Pkwy South, Aurora Ontario. L4G 3T9 • (905) 841-2866 • www.bunn.com

BUNN® practices continuous product research and improvement. We reserve the right to change specifications and product design without notice. Such revisions do not entitle the buyer to corresponding changes, improvements, additions or replacements for previously purchased equipment.

All dimensions shown in centimeters.