

## JDF-4S Silver Series Gourmet Cold Beverage System



### Model JDF-4S

(push-and-hold model shown)

Dimensions: 33.1"H x 15"W x 27.5"D  
(84.1 cm H x 38.1 cm W x 69.9 cm D)

## Features

### Gourmet Cold Beverage System

- Patented High Intensity Mixing System delivers consistent quality in the cup --- cup after cup, from the top of the cup to the bottom
- Includes variety-pack of eight displays: Apple Juice; Cranberry Juice; Grape Juice; Lemonade; Orange Juice; Pineapple Juice; Prune Juice; Iced Tea
- LED lighted door graphics bring high visibility to front-of-house applications
- One dispenser delivers both frozen and ambient products, to maximize profitability by providing greater flexibility in product offerings
- 18lb (8.2 kg) ice bank provides superior cold drink capacity
- Push Button Push-and-hold model. Can also be re-set for a single size portion dispense.
- Portion Control dispense model: 3 dispense sizes can be set
- 7" (17.8cm) cup clearance accommodates most juice containers
- Quick dispense with 1.0 to 1.5oz (29.6 to 44.4ml) per second flow rate
- Door lock standard
- ADA compliant dispense switch kit model available for self-serve locations
- Service friendly design makes set up and maintenance simple
- Pumps and Mixes most 2+1 to 11+1 concentrates accurately and consistently, including 4+1 and 5+1 high viscosity concentrates

## Related Products

### Easy Clear® EQHP-10

Product No. : 39000.0004

### Easy Clear® EQHP-10CRTG

Product No. : 39000.0004



### Ambient Conversion Kit

Product No.: 33699.0001

(one kit required per dispense station - photo shows 4-dispense station unit with one container and three ambient conversion kits)



### Refillable Juice Container

Capacity: 1 Gallon

Product No.: 39302.0000



## Model

JDF-4S

## Agency Listing



# Dimensions & Specifications



| Model                    | Product #  | Volts | Amps | Capacity<br>8oz. drinks/hr* | Cubic<br>ft <sup>3</sup> /m <sup>3</sup> | Weight<br>lbs/kg | Cord<br>Attached |
|--------------------------|------------|-------|------|-----------------------------|--|------------------|------------------|
| JDF-4S (push-and-hold)   | 37300.6079 | 120   | 6    | 218                         | 7.94 / .22                               | 145 / 65.9       | Yes†             |
| JDF-4S (portion control) | 37300.6080 | 120   | 6    | 218                         | 7.94 / .22                               | 145 / 65.9       | Yes†             |

Models include air filter

Refillable Juice Container Product #: 39302.0000 Capacity: 1 Gallon

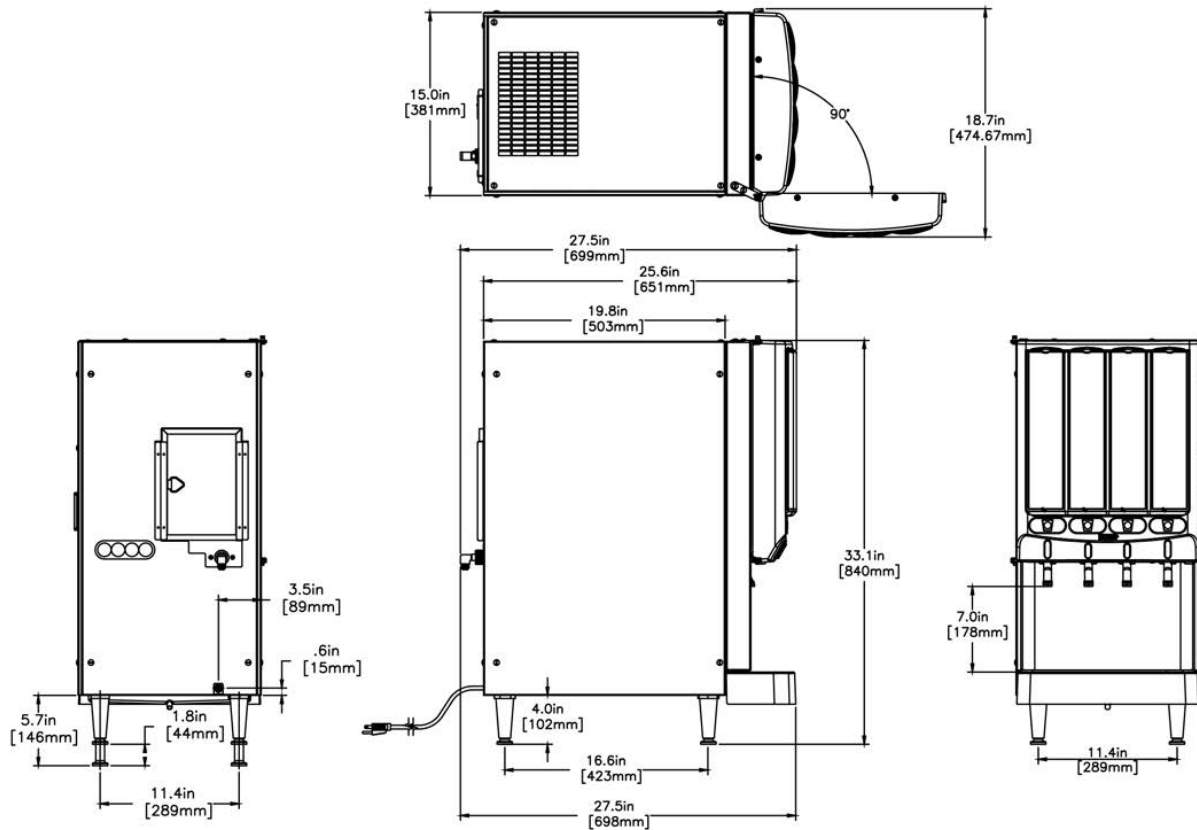
\* 75°F (24°C) incoming water for 145 drinks without exceeding 41°F (5°C) finished drink temperature.

†Power cord (NEMA 5-15P) 15 Amp-120V machine only.

Electrical: Model requires 2-wire grounded service rated 120V, single phase, 60 Hz.

Plumbing: 20-100 psi (138 - 690 kPa). Machine supplied with 3/8" male fitting.

Refrigeration: R-134a refrigerant, 9 oz. (.28 kg), 8 lb. (3.6 kg) ice bank system



Bunn-O-Matic® Corporation of Canada • 280 Industrial Pkwy South, Aurora Ontario. L4G 3T9 • (905) 841-2866 • www.bunn.com

BUNN® practices continuous product research and improvement. We reserve the right to change specifications and product design without notice. Such revisions do not entitle the buyer to corresponding changes, improvements, additions or replacements for previously purchased equipment.

All dimensions shown in centimeters.