

## Thermal Servers

### Features

#### Thermal Servers

- An appealing, easy-to-use self-service coffee system.
- Convenient for keeping coffee hot and fresh for hours.
- Easily transported to remote locations.
- Standard base accomodates up to 4.5" (11.4 cm) tall cups.
- Removable drip tray holds 2.5 oz. (73 ml).
- Sturdy handle with built in name tag holder.
- Available with glass or stainless liners.
- Mesh filter included in brew through lid.



**Thermal Server**  
(Shown with Standard Brew Thru Lid)  
Dimensions: 17.1" H x 7.3" W x 8.9" D  
(43.3cm H x 18.5cm W x 22.6cm D)



**Thermal Server with no base**  
(Shown with Standard Brew Thru Lid)  
Dimensions: 11.8" H x 7.3" W x 8.6" D  
(29.8 cm H x 18.5 cm W x 21.8 cm D)

### Related Products

**TSR-1**  
Single Thermal Server Rack.  
Shown with Thermal Server  
(not included)  
Product # 18008.6009

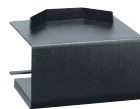


**BUNN Safety-Fresh<sup>®</sup> Brew Thru Lid**  
Order Lid Kit , Product No. 22964.7999

**Thermal Server Booster\***  
Product No. : 18010.6000  
Capacity: 1 Thermal Server without base  
Shipping Weight: 2 lbs. (.9 kg)  
Dimensions: 4.5" H x 9.6" W x 8.3" D  
(11.4cm H x 23.5cm W x 21cm D)

**Tall Server Base (7.5" / 19.1 cm tall cup)\***  
Product No. : 23300.6100  
Capacity: 1 Thermal Server without base  
Shipping Weight: 4 lbs (1.8 kg)  
Dimensions: 9.6" H x 7.9" W x 8.9" D  
(24.3 cm H x 20.cm W x 22.6 D)

**TSR-2**  
Double Thermal Server Rack.  
Shown with Thermal Servers  
(not included)  
Product # 18008.6010



\* Both to be used in conjunction with the Thermal Server without Base.  
Product No's : 23300.6105 & 23300.6124

#### Model

TS  
TS (no base)

#### Agency Listing



## Dimensions & Specifications

CANADA



Model	Product #	Liner Type	Capacity (each)	Quantity	Cubic ft <sup>3</sup> /m <sup>3</sup>	Weight lbs/kg
TS (Std brew lid, with base)	23300.6101	Glass	2.5 liters (84 oz.)	single unit	0.8 / .02	6.3 / 2.9
TS (Std brew lid, with base)	23300.6102	Glass	2.5 liters (84 oz.)	case of 6	5.0 / .14	38 / 17.2
TS (Std brew lid, without base)	23300.6105	Glass	2.5 liters (84 oz.)	single unit	.52 / .02	5.2 / 2.4
TS (Std brew lid, without base)	23300.6106	Glass	2.5 liters (84 oz.)	case of 6	3.5 / 0.1	31 / 14
TS (Std brew lid, with base)	23300.6120	Stainless	2.5 liters (84 oz.)	single unit	0.8 / .02	6.5 / 2.9
TS (Std brew lid, with base)	23300.6121	Stainless	2.5 liters (84 oz.)	case of 6	5.0 / .14	39 / 17.7
TS (Std brew lid, without base)	23300.6124	Stainless	2.5 liters (84 oz.)	single unit	.52 / .02	5.3 / 2.4
TS (Std brew lid, without base)	23300.6125	Stainless	2.5 liters (84 oz.)	case of 6	3.5 / 0.1	32 / 14.5

Bunn-O-Matic® Corporation of Canada • 280 Industrial Pkwy South, Aurora Ontario. L4G 3T9 • (905) 841-2866 • [www.bunn.com](http://www.bunn.com)

BUNN® practices continuous product research and improvement. We reserve the right to change specifications and product design without notice. Such revisions do not entitle the buyer to corresponding changes, improvements, additions or replacements for previously purchased equipment.

All dimensions shown in centimeters.

1/16 © Bunn-O-Matic Corporation