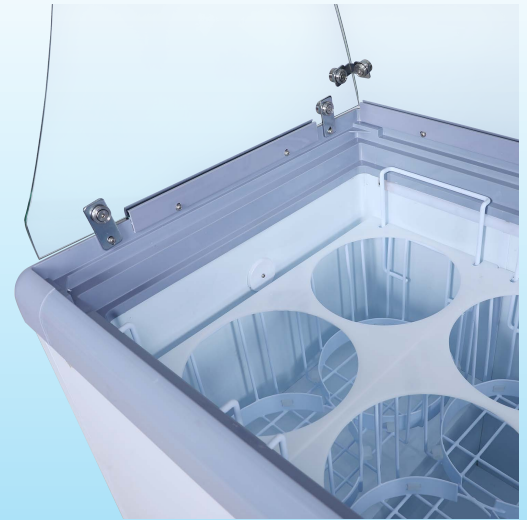




ANCASTER

FOOD EQUIPMENT

**BRAND NEW GLASS DOOR
DIPPING CABINET FREEZERS**



Basket Display

	DC/FG-150	DC/FG-360	DC/FG-560
Doors	Two Sliding	Two Sliding	Two Sliding
Tubs Displayed	4	8	12
Tubs Stored	2	6	10
Exterior Dimensions (WxDxH)	26" x 28" x 34.5"	49.6" x 28" x 34.5"	71" x 28" x 34.5"
Exterior Dimensions (WxDxH)	26" x 28" x 52.1"	49.6" x 28" x 52.1"	71" x 28" x 52.1"
LED Lights	Yes		
Net Weight (lbs)	97	152.1	200.6
Gross Weight (lbs)	105.8	168.9	229.3
Electrical	110V / 60Hz		
Plug Type	NEMA 5-15P		
Temperature Range	< -18C / < 0.4F		
Refrigerant	R290		
Shipping Dimensions (WxDxH)	29" x 30" x 37.5"	52.5" x 30" x 37.5"	74" x 30" x 37.5"
Warranty	Five Years on Compressor		

FG-150



NEMA 5-15



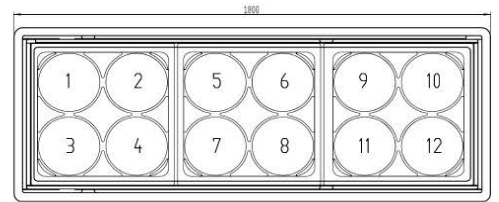
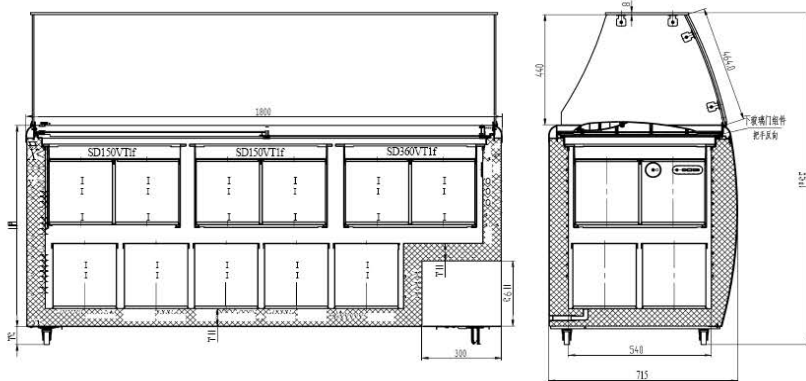
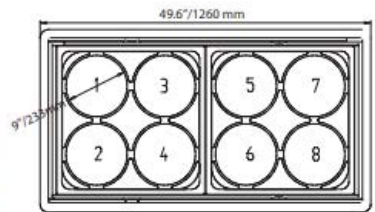
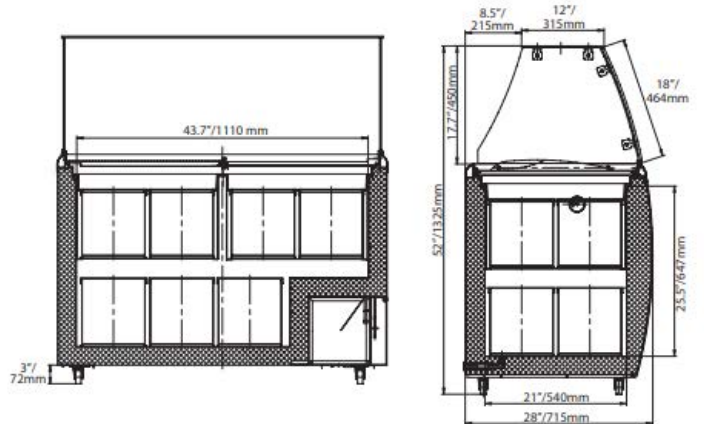
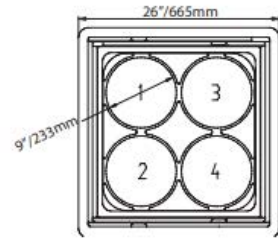
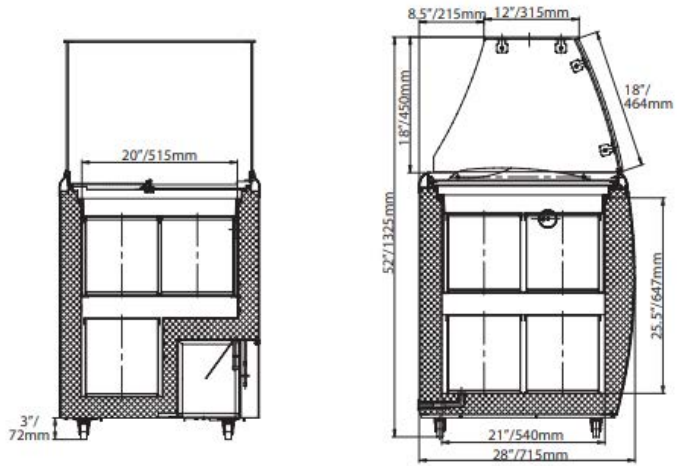
CONTACT US FOR MORE DETAILS:



ANCASTER

FOOD EQUIPMENT

BRAND NEW GLASS DOOR DIPPING CABINET FREEZERS



CONTACT US FOR MORE DETAILS: